



## Legislation Text

---

**File #:** ID#18-58, **Version:** 1

---

**AGENDA CAPTION:**

Receive a presentation from the San Marcos Greenbelt Alliance regarding a proposed regional trail system.

**Meeting date:** 1/30/2018

**Department:** CMO

**Amount & Source of Funding**

**Funds Required:** N/A

**Account Number:** Click or tap here to enter text.

**Funds Available:** Click or tap here to enter text.

**Account Name:** Click or tap here to enter text.

**Fiscal Note:**

**Prior Council Action:** None to date

**City Council Goal:**

Goal #2 Beautify & Enhance the Quality of Place

Choose an item.

Choose an item.

**Comprehensive Plan Element (s):**

- Economic Development - Choose an item.
- Environment & Resource Protection - Choose an item.
- Land Use - Choose an item.
- Neighborhoods & Housing - Choose an item.
- Parks, Public Spaces & Facilities - Choose an item.
- Transportation - Choose an item.
- Not Applicable

**Master Plan:** n/a Parks Master plan in developmentChoose an item.

**Background Information:**

The San Marcos Greenbelt Alliance would like to present a proposed regional trail system from Austin to San Marcos. The Alliance has been working with regional counties, cities, the Meadows Center, Texas State University Geography class, the Hill Country Conservancy, Take-a- Hike San Marcos and Guadalupe-Blanco River Trust.

**Council Committee, Board/Commission Action:**

**N/A**

**Alternatives:**

**N/A**

**Recommendation:**

**N/A**

# Emerald Crown Trail Planning Phase

A Regional Trail Connecting Communities in Eastern Hays County



## Emerald Crown Trail Planning Phase

### Overview

- The Work Group - Partners and Stakeholders
- Work Group Ground Rules
- Purposes and Vision for the Trail
- Progress Thus Far
- Next Steps
- Wrap-up

A Regional Trail Connecting Communities in Eastern Hays County

## Emerald Crown Trail Planning Phase

### SMGA Background

- All volunteer nonprofit formed in 1998
- Trail crew builds/maintains trails in San Marcos natural areas
- Sponsors trail hikes and walks
- Maintains trail maps, promotes use of trails - website and social media

A Regional Trail Connecting Communities in Eastern Hays County

## Emerald Crown Trail Planning Phase

### SMGA's Role in This Project

- Catalyst for cooperative efforts of partners and stakeholders
- Regional trail is not a SMGA project!

A Regional Trail Connecting Communities in Eastern Hays County

## Emerald Crown Trail Planning Phase

### Regional Trail Work Group

Partners: SMGA, Hays County, cities of Kyle, Buda, San Marcos

Stakeholders: Guadalupe-Blanco River Trust, Meadows Center, Hill Country Conservancy, Take-a-Hike San Marcos, Texas State Univ. Geography Dept.

A Regional Trail Connecting Communities in Eastern Hays County

## Emerald Crown Trail Planning Phase

### Work Group Ground Rules

- All partners and stakeholders have a vote
- Meetings open to public
- Decisions by consensus
- Group will not request use of eminent domain to secure ROW
- Look for win-win opportunities with landowners and developers

A Regional Trail Connecting Communities in Eastern Hays County

## Emerald Crown Trail Planning Phase

### Purposes for the Trail

- Transportation – Primary purpose
- Connecting communities
- Recreation – Promoting use of parks and natural areas
- Health
- Connecting with nature

A Regional Trail Connecting Communities in Eastern Hays County

## Emerald Crown Trail Planning Phase



### Vision for the Trail

- Walkable and bikeable
- Wide enough for two-way traffic
- A backbone that connects to points of interest and other trails

A Regional Trail Connecting Communities in Eastern Hays County



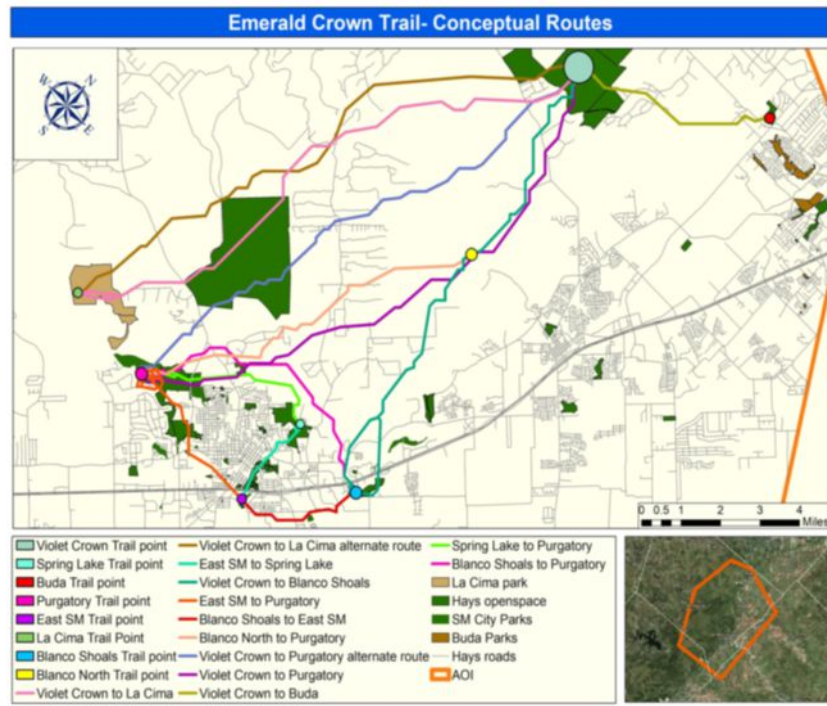
# Emerald Crown Trail Planning Phase

## Progress Thus Far

- Work Group Approved Ground Rules, Vision for the Trail, and trail name – Emerald Crown
- Community assistance award - NPS Rivers, Trails and Conservation Assistance (RTCA) program (technical, outreach, planning)
- Engaged TXST Geography GIS group for preliminary mapping of possible trail routes

A Regional Trail Connecting Communities in Eastern Hays County

## TXST GIS Class Map and analysis of Conceptual Trail Routes



## Emerald Crown Trail Planning Phase

### Next Steps

- Host public workshops in area communities
- Develop concept plan/master plan
- Identify potential funding sources
- Look for opportunities with landowners/ developers
- Determine schedule and approach to construction, O&M obligations

A Regional Trail Connecting Communities in Eastern Hays County

## Emerald Crown Trail Planning Phase

### Wrap-up

- Spread the word about our proposal
- It's only a proposal at this point
- We're asking for continued involvement in the Work Group's planning process
- We may request assistance from your parks/ planning/GIS/grant staffs – your direction will help

A Regional Trail Connecting Communities in Eastern Hays County



# Emerald Crown Trail Planning Phase

Questions?

Thanks from SMGA and the Work  
Group!

A Regional Trail Connecting Communities in Eastern Hays County





United States Department of the Interior  
NATIONAL PARK SERVICE  
INTERMOUNTAIN REGION  
12795 West Alameda Parkway  
Lakewood, CO 80228



December 11, 2017

Mark Taylor, Board President  
San Marcos Greenbelt Alliance  
107 E Hopkins St, Suite 121A  
San Marcos, TX 78666

Dear Mr. Taylor:

I am pleased to inform you that your project has been selected for support from the Rivers, Trails, and Conservation Assistance (RTCA) program of the National Park Service for fiscal year 2018. This support is anticipated to begin immediately and will continue through September 2018. Your application for RTCA assistance advances our program goal of helping build local, connected networks of parks, trails, and greenspaces. The goal outlined for the project—to develop a regional trail connecting San Marcos, Kyle, and Buda—is one that the National Park Service strongly supports.

We look forward to working with your organization and its partners to facilitate planning for this regional trail. Justin Bates from our Texas Field Office will be your primary point of contact during the assistance period. He may be reached at 512-878-7463 or by email at [justin\\_bates@nps.gov](mailto:justin_bates@nps.gov).

The assistance to be provided by RTCA this year will include:

1. Identifying case studies of other regional trails to inform local trail planning efforts
2. Assisting with efforts to engage key stakeholders, elected and appointed officials, and members of the public in the trail planning process
3. Participating in meetings of the Kyle-San Marcos-Buda Regional Trail Work Group

RTCA expects the San Marcos Greenbelt Alliance and other partners to contribute in-kind and financial support to the success of the project. Such contributions could include:

1. Participation in project meetings, site visits, and other project activities
2. Management of logistics for project meetings, including meeting space (as necessary and available), printing, and reproduction
3. Assistance in organizing and supporting public engagement and outreach efforts

4. Provision of GIS mapping and other professional and technical support to advance the trail planning effort
5. Participation in development of grant applications and other funding requests
6. Coordination and engagement with project stakeholders, partners, elected representatives, and governmental departments

If printed materials, signage, reports, or publications are part of the project, we request appropriate recognition by using the NPS arrowhead symbol and mention of the Rivers, Trails, and Conservation Assistance program.

Please contact Justin if you have any questions or concerns about the offered assistance and mutual responsibilities listed above. We look forward to working with you on this important effort.

Regards,



---

Alan Ragins, Program Leader  
Rivers, Trails, and Conservation Assistance Program  
Intermountain Region  
National Park Service

cc: The Honorable John Cornyn, United States Senator  
The Honorable Ted Cruz, United States Senator  
The Honorable Lamar Smith, United States House of Representatives  
The Honorable Roger Williams, United States House of Representatives  
The Honorable Lloyd Doggett, United States House of Representatives  
The Honorable Donna Campbell, Texas Senate  
The Honorable Jason Isaac, Texas House of Representatives  
The Honorable Bert Cobb, Hays County Judge  
The Honorable Debbie Gonzales Ingalsbe, Hays County Commissioner  
The Honorable Will Conley, Hays County Commissioner  
The Honorable John Thomaidis, Mayor, City of San Marcos  
The Honorable Travis Mitchell, Mayor, City of Kyle  
The Honorable George Haehn, Mayor, City of Buda  
Carrie Kasnicka, Executive Director, Guadalupe Blanco River Trust  
Butch Smith, Trail Manager, Violet Crown Trail, Hill Country Conservancy  
Kerry Urbanowicz, Director, City of Kyle Parks & Recreation Department  
Andrew Sansom, Executive Director, The Meadows Center for Water and the Environment  
Dianne Wassenich, Executive Director, San Marcos River Foundation  
Jason Julian, Associate Professor, Texas State University Department of Geography



**Emerald Crown Regional Trail Project Work Group  
Partner/Stakeholder Designated Representatives  
As of January 23, 2017**

<b>Organization Name</b>	<b>Work Group Designee(s)</b>
San Marcos Greenbelt Alliance	Mark Taylor Sherwood Bishop Todd Derkacz
Hays County	Emily Barber
City of San Marcos	Drew Wells
City of Kyle	Kerry Urbanowicz Taylor Ray
City of Mountain City	Phillip Taylor, Mayor
City of Buda	Chance Sparks Kenny Skrobanek
Texas State University Geography Department faculty	Jason Julian Rusty Weaver Yihong Yuan
Guadalupe Blanco River Trust	Carrie Kasnicka
Meadows Center for Water and the Environment	Anna Huff
Hill Country Conservancy	Butch Smith
Take-a-Hike San Marcos	Bernie Andersen
National Park Service Rivers Trails and Conservation Assistance	Justin Bates



January 2, 2018

Mayor John Thomaides  
Bert Lumbreras, City Manager  
City of San Marcos  
630 East Hopkins  
San Marcos, TX 78666

Via email: [jthomaides@sanmarcostx.gov](mailto:jthomaides@sanmarcostx.gov)

Via email: [City\\_Manager\\_Info@sanmarcostx.gov](mailto:City_Manager_Info@sanmarcostx.gov)

Dear Mayor Thomaides and Mr. Lumbreras:

I am writing to ask you to schedule a presentation to the San Marcos City Council on a proposed regional trail to connect Kyle, Buda and San Marcos.

As you may know, the San Marcos Greenbelt Alliance (SMGA) has been spearheading an effort to plan for this trail, which would include a connection to the Violet Crown Trail that the Hill Country Conservancy is in the process of constructing from Austin to a point west of Buda. Last July, SMGA organized a work group for the project with representatives from Hays County, the cities of Buda, Kyle and San Marcos, the Meadows Center and the Geography Department at Texas State University, the Hill Country Conservancy, Take-a-Hike San Marcos, and the Guadalupe-Blanco River Trust. Mr. Drew Wells has represented San Marcos on the Work Group.

You were recently copied on a letter informing SMGA of a commitment of community assistance for this effort from the National Park Service Rivers, Trails and Conservation Assistance (RTCA) program.

The Work Group has held several meetings to discuss the desired purposes and characteristics for the trail, and Emerald Crown Trail was selected as the name for the trail. Recently, a group of Texas State Geography Department GIS students completed a report to the Work Group with preliminary mapping of possible routes for the trail. The report included software allowing for analysis of other possible routes.

The Work Group, with assistance from the RTCA staff, would like to make a presentation on the proposed regional trail to the San Marcos City Council at an upcoming meeting. The presentation would take approximately ten minutes. We would appreciate it if you could schedule this presentation as soon as possible, and let me know the date and time so we can inform Work Group members and make other needed arrangements. We hope to make the same presentation to the Hays County Commissioners and to the Kyle and Buda city councils.

The Work Group is also planning to schedule a series of workshops on the proposed trail. The workshops will be in Kyle, Buda and San Marcos, hopefully some time in March, and they will be open to the public. We will work with your staff to schedule the San Marcos workshop, and we hope to announce the workshop schedule during our presentation.

Thanks for San Marcos' participation in the Work Group. I look forward to hearing from you on a date and time for the presentation to the San Marcos City Council.

Sincerely,

Mark Taylor  
President

Cc: Council Members, Collette Jamison, Steve Parker, Drew Wells, Laurie Moyer (all via email)