

CAUSE NO. 20-2040

THE STATE OF TEXAS EX REL.	§	IN THE DISTRICT COURT
NATHAN KASPAR	§	
	§	
Plaintiff,	§	
	§	
V.	§	_____ JUDICIAL DISTRICT
	§	
RUBEN BECERRA, IN HIS OFFICIAL	§	
CAPACITY AS COUNTY JUDGE OF	§	
HAYS COUNTY, TEXAS	§	
	§	
Defendant.	§	HAYS COUNTY, TEXAS

PETITION FOR REMOVAL OF HAYS COUNTY JUDGE RUBEN BECERRA
PURSUANT TO TEXAS CONST. ART. 5 § 24 & CHAPTER 87,
LOCAL GOVERNMENT CODE

The State of Texas by relation of Nathan Kaspar (“Plaintiff”) files this lawsuit seeking removal of Hays County Judge Ruben Becerra (“Defendant”) (Plaintiff and Defendant are collectively “the Parties”) pursuant to *Texas Const. Art. 5 § 24* and Chapter 87, *Local Government Code*, and in support thereof, respectfully submits the following.

I. INTRODUCTION

1. In 2018, the voters of Hays County elected Defendant as Hays County Judge. In January 2019, Defendant took the oath of Office for that position, and in doing so, swore to “*faithfully execute the duties of the office of County Judge,*” and further “*preserve, protect, and defend the Constitution and laws of the United States and of this State.*” Instead of abiding by his sworn oath, Defendant has in consecutive years (2019 and 2020) taken at least Fifty Thousand (\$50,000) dollars from the hard-working taxpayers of this State for work that he did not do. As such, this Court should immediately (1) issue citation allowing this matter to proceed¹; and (2) suspend Defendant and appoint another person to perform the duties of Defendant’s office².

¹ *Local Government Code* § 87.016.

II. DISCOVERY CONTROL PLAN LEVEL

2. Plaintiff intends that discovery be conducted under Discovery Level 3.

III. PARTIES AND SERVICE

3. Plaintiff is an individual residing in Hays County, Texas. Plaintiff has resided in Hays County for at least six months prior to the filing of this Petition.

4. Defendant is presently serving as Hays County Judge and may be served with process at 111 E. San Antonio St., Suite 300, San Marcos, Texas 78666, or wherever he may be found in the State of Texas, by personal delivery.

5. Hays County District Attorney Wes Mau may be served with process Hays Government Center, 712 S. Stagecoach Trail, Suite 2057, San Marcos, Texas 78666, or wherever he may be found in the State of Texas, by personal delivery.

IV. JURISDICTION, VENUE, & RULE 47 DISCLOSURES

6. Venue and Jurisdiction are mandatory and proper in Hays County, Texas, and in this Court, pursuant to *Local Government Code* §87.015.

7. This Court also has jurisdiction because the claims and causes of action herein asserted herein are within the jurisdictional limits of this Court and arise under the statutory and common law of the State of Texas, as well as the Constitution of the State of Texas.

8. Pursuant to Rule 47, Plaintiff seeks non-monetary relief in the form of relief that is properly allowed pursuant to *Texas Const. Art. 5 § 24* and Chapter 87, *Local Government Code*.

² *Local Government Code* § 87.017.

V. HAYS COUNTY DISTRICT ATTORNEY

9. While the Local Government Code requires “*the county attorney to represent the state in a proceeding for the removal of an officer*”³, in Hays County, the Office of the Criminal District Attorney “*shall perform the other duties that are conferred by law on county and district attorneys in the various counties and districts*”⁴.

10. Hays County District Attorney Wes Mau has agreed that upon issuance of citation his office will (1) represent the state in a proceeding for the removal of Defendant based on the allegations set forth herein; or (2) simultaneously with entry of a recusal order, cause or assist in causing, the appointment of a qualified representative to represent the state in a proceeding for the removal of Defendant based on the allegations set forth herein.

VI. RELEVANT LAW

A. Basis for Removal.

11. A district judge may remove from office a county judge for “*official misconduct*”^{5 6}; “*incompetency*”⁷; and/or “*other causes defined by law*”⁸

B. Official Misconduct.

12. “*Official misconduct*” means intentional, unlawful behavior relating to official duties by an officer entrusted with the administration of justice or the execution of the law. The term includes an intentional or corrupt failure, refusal, or neglect of an officer to perform a duty

³ Local Government Code § 87.018.

⁴ Government Code § 44.205.

⁵ Texas Const. Art. 5 § 24.

⁶ Local Government Code §§87.012(3), 87.013(2). & 87.011(3).

⁷ Local Government Code §§87.012(3), 87.013(1). & 87.011(2).

⁸ Texas Const. Art. 5 § 24.

imposed on the officer by law⁹. Texas Code of Criminal Procedure Art. 3.04 also defines “*official misconduct*” as “*an offense that is an intentional or knowing violation of a law committed by a public servant while acting in an official capacity as a public servant.*” An elected officer can be removed for official misconduct only if he violates a specific statutory duty that amounts to unlawful conduct¹⁰, or stated differently, conduct *without reasonable grounds to believe the act lawful*¹¹.

C. Incompetency.

13. “*Incompetency*” means gross ignorance of official duties or gross carelessness in the discharge of those duties¹².

14. Courts have ruled, for example, that a county commissioner spending “*county funds to refurbish his privately-owned spray rig*” amounted to gross ignorance of official duties or gross carelessness in the discharge of those duties¹³.

D. Judicial Functions Salary.

15. A county judge is entitled to an annual salary supplement from the state in an amount equal to 18 percent of the state base salary paid to a district judge as set by the General Appropriations Act in accordance with *Texas Government Code* § 659.012(a), if at least 40 percent of the functions that the judge performs are “*judicial functions.*” To receive this supplement, a county judge must file with the Comptroller's judiciary section an affidavit

⁹ *Local Government Code* § 87.012(3).

¹⁰ *Stern v. State ex rel. Ansel*, 869 S.W.2d 614,619–23 (Tex. App.Houston [14th Dist.] 1994, writ denied). *State ex rel. Edwards v. Reyna*, 160 Tex. 404, 333 S.W.2d 832 (1960).

¹¹ *Meyer v. Tunks*, 360 S.W.2d 518 (Tex.1962) (orig. proceeding); *State ex rel. Edwards v. Reyna*, 160 Tex. 404, 333 S.W.2d 832 (1960).

¹² *Local Government Code* § 87.011(2) (A) & (B).

¹³ *Teal v. State*, 230 S.W.3d 427 (Tex. App.—San Antonio 2007, pet. denied).

swearing on his oath that at least 40 percent of the functions that the judge has performed, were and are, judicial functions¹⁴.

E. What Qualifies as “Judicial Functions?”

16. There is authority establishing what actually constitutes “judicial functions.” In 2016, the Austin County Auditor requested an Attorney General Opinion on the following question: “*What qualifies as a “judicial function” of a county judge such that the judge may claim a state salary supplement under section 26.006 of the Government Code*¹⁵?” The conclusion: “*When a county judge is exercising criminal or civil jurisdiction as authorized by chapter 26 of the Government Code, the county judge is performing a judicial function for purposes of section 26.006*¹⁶.” There is also authority that “*when a county judge sits as a magistrate, he performs judicial functions*¹⁷.”

17. Opinions of the attorney general rendered in due course are ACCEPTED as highly persuasive and are entitled to great weight unless clearly wrong¹⁸. Furthermore, a court should not give a different construction to an Attorney General's opinion unless it is convinced that the Attorney General's Office is wrong¹⁹.

18. The above referenced OAG opinions are of heightened importance as “*the attorney general shall advise a district or county attorney of this state, on the attorney's request, in the prosecution or defense of an action in which the state is interested before a district or inferior*

¹⁴ Government Code § 26.006 (a) & (b).

¹⁵ See Tex. Att'y Gen. Op. No. KP-0090 (2016).

¹⁶ See Tex. Att'y Gen. Op. No. KP-0090 (2016).

¹⁷ See Tex. Att'y Gen. Op. No. GA-0426 (2006)

¹⁸ *Jones v. Williams*, 121 Tex. 94, 45 S.W.2d 130, 131, 79 A.L.R. 983 (1931); *Royalty v. Nicholson*, 411 S.W.2d 565, 572 (Tex.Civ.App. Houston 1967, writ ref'd n. r. e.).

¹⁹ *San Antonio Union Junior College Dist. v. Daniel*, 206 S.W.2d 995, 998 (Tex.1947).

court if the requesting attorney has investigated the question involved and submitted a brief to the attorney general²⁰.” This case must be tried in the name of the State of Texas²¹, so it is clear this is “an action in which the state is interested.” Hypothetically speaking, if District Attorney Mau were to seek “advise” as to whether or not Defendant has ever engaged in “judicial functions,” it is respectfully submitted the Attorney General would most certainly refer District Attorney Mau to the above referenced opinions²².

19. The state salary supplement for county judges is set forth in Chapter 26 of the *Government Code*. It is clear that the Legislature intended “judicial function” to encompass a county judge's performance of powers and duties authorized by chapter 26²³, and not such powers and duties as enumerated under the *Local Government Code*, or any other provision of Texas law. The “Jurisdiction & Powers” of a county judge set forth in Chapter 26, Subchapter D, of the *Government Code*²⁴ provides guidance as to what functions are judicial functions.

20. Attached is a “Descriptive Summary” of the Texas Court System issued by the State of Texas. The “Descriptive Summary” establishes Defendant, at best, has the following jurisdiction: (1) concurrent jurisdiction with justice courts in civil cases where the matter in controversy exceeds \$200 but does not exceed \$10,000; (2) concurrent jurisdiction with the district courts in civil cases where the matter in controversy exceeds \$500 but does not exceed \$5,000; (3) general jurisdiction over probate cases; (4) juvenile jurisdiction; (5) exclusive original jurisdiction over misdemeanors, other than those involving official misconduct, where punishment for the offense

²⁰ *Government Code* § 402.043

²¹ *Local Government Code* § 87.018.

²² See Tex. Att'y Gen. Op. No. KP-0090 (2016); Tex. Att'y Gen. Op. No. GA-0426 (2006).

²³ *Tex. Adjutant Gen. 's Office v. Ngakoue*, 408 S.W.3d 350, 354 (Tex. 2013) (explaining that courts read a statute in its context and view the statute as a whole).

²⁴ *Government Code* § 26.041 – 052.

is by fine exceeding \$500 or a jail sentence not to exceed one year; and (6) county courts generally have appellate jurisdiction (usually by trial de novo) over cases tried originally in the justice and municipal courts²⁵.

VII. FACTS

A. General Factual Allegations.

21. Defendant was elected as Hays County Judge in November 2018 and assumed said office on January 1, 2019.

22. On information and belief, Defendant has filed affidavits with the Comptroller's judiciary section swearing on his oath that at least 40 percent of the functions that Defendant performs, have been and are, judicial functions ("Defendant's Affidavits"). As a result of filing these affidavits, Defendant was paid an annual salary supplement in 2019 of \$25,000, and in 2020 of \$25,000.

23. In order for Defendant's Affidavits to be truthful, Defendant would need to show that at least 40 percent of the functions that Defendant performs amount to Defendant doing one of the following: (1) **Jurisdiction 1:** exercising jurisdiction in civil cases where the matter in controversy exceeds \$200 but does not exceed \$10,000; (2) **Jurisdiction 2:** exercising jurisdiction in civil cases where the matter in controversy exceeds \$500 but does not exceed \$5,000; (3) **Jurisdiction 3:** exercising jurisdiction over probate cases; (4) **Jurisdiction 4:** exercising juvenile jurisdiction; (5) **Jurisdiction 5:** exercising jurisdiction over misdemeanors, other than those involving official misconduct, where punishment for the offense is by fine exceeding \$500 or a jail sentence not to exceed one year; and (6) **Jurisdiction 6:** exercising appellate jurisdiction (usually by trial de novo) over cases tried originally in the justice and

²⁵ Plaintiff respectfully submits that the "*Descriptive Summary*" is self-authenticating and requires no extrinsic evidence of authenticity in order to be admitted. *Texas Rules of Evidence*, Rule 902(5).

municipal courts. *Defendant has never done any of these things or performed any of these judicial functions.*

24. “*Jurisdiction 1*” gives Defendant concurrent jurisdiction with all six (6) Justices of the Peace in Hays County. “*Jurisdiction 2*” to “*Jurisdiction 6*” gives Defendant concurrent jurisdiction with County Courts at Law 1, 2, and 3 in Hays County. Furthermore, Hays County has a Criminal Associate Judge that magistrates all criminal defendants in Hays County. Quite simply, any avenue Defendant has to exercise civil jurisdiction, criminal jurisdiction, or magistrate is covered by some other Court in Hays County.

25. If Defendant were to attempt to exercise civil jurisdiction, criminal jurisdiction, or magistrate, he would be required to coordinate this with one of Hays County’s Justices of the Peace, the administrator for Hays County Courts at Law (Rene Garner), the Hays County Criminal District Clerk’s Office, or Hays County’s Criminal Associate Judge that magistrates all criminal defendants in Hays County (Ben Moore). Again, any avenue Defendant has to exercise civil jurisdiction, criminal jurisdiction, or magistrate is covered by another Court. A response to a public information request to Hays County establishes²⁶:

- (a) There are no records and/or documents showing Ruben Becerra exercised “*Civil Jurisdiction*” (including, but not limited to, Probate matters, JP Appeals, etc.) from the date he was sworn-in as Hays County Judge in January 2019 through the present;
- (b) There are no records and/or documents showing Ruben Becerra signed or filed civil orders, or that Ruben Becerra submitted civil filings to any court in Hays County;
- (c) There are no records and/or documents showing Ruben Becerra exercised “*Criminal Jurisdiction*” from the date he was sworn-in as Hays County Judge in January 2019 through the present;

²⁶ See Exhibit A

- (d) There are no records and/or documents showing Ruben Becerra signed or filed criminal orders, or that Ruben Becerra submitted criminal filings to any court in Hays County;
- (e) There are no records and/or documents showing Ruben Becerra has “*sat as a magistrate*” from the date he was sworn-in as Hays County Judge in January 2019 through the present;
- (f) There are no records and/or documents showing Ruben Becerra signed or filed orders “*as a magistrate,*” or that Ruben Becerra submitted filings “*as a magistrate*” to any court in Hays County;
- (g) There are no records and/or documents showing Ruben Becerra accessed or utilized the Odyssey System from the date he was sworn-in as Hays County Judge in January 2019 through the present; and

29. This is in stark contrast the prior Hays County Judge, Bert Cobb. Documents and records from Hays County clearly show Judge Cobb exercised civil jurisdiction, criminal jurisdiction, and/or sat as a magistrate²⁷. If Defendant had ever done the same, such records would exist showing as much. They don’t because he hasn’t.

30. Additionally, attached is an affidavit from Rene Garner, the Administrator for Hays County Courts at Law 1, 2, and 3 since 1984. Mrs. Garner testifies as follows “*In my position as Administrator, I oversee and have knowledge of all dockets (civil and criminal) for Hays County Courts at Law 1, 2, and 3. Ruben Becerra has never presided over any docket at the Hays County Courts at Law level*²⁸.”

31. The foregoing clearly establishes that Defendant has **NEVER** exercised civil jurisdiction, criminal jurisdiction, or sat as a magistrate. Plaintiff also asserts that testimony from the Hays County Treasurer’s Office will establish Hays County received Defendant’s salary supplement from the Comptroller’s Office based on and in reliance upon Defendant’s Affidavits. The Hays

²⁷ See Exhibit B

²⁸ See Exhibit C

County Treasurer's Office then remitted the salary supplement to Defendant, AND Defendant accepted that salary

32. Defendant has bilked the taxpayers of this State. In doing so, Defendant has violated his statutory duties.

B. Criminal Misconduct.

33. The actions on the part of Defendant also constitute criminal violations, to-wit: violations of:

- (a) Tex. Penal Code §37.10: Tampering with governmental record/ knowingly making a false entry in a governmental record;
- (b) Tex. Penal Code §37.02: Perjury / making a false statement under oath; and
- (c) Tex. Penal Code §37.09: Making a record or document with knowledge of its falsity and with intent to affect the course or outcome of an official proceeding.

34. The foregoing crimes also constitute official misconduct as defined by Tex. Code of Criminal Proc. Art. 3.04. Defendant's execution and filing of Defendant's Affidavits constitute violations of the foregoing sections of the Penal Code.

VIII. CAUSES OF ACTION & ARGUMENTS/AUTHORITIES

A. Removal under *Local Government Code* § 87.013(a)(1).

35. Plaintiff incorporates the preceding paragraphs as if fully repeated here.

36. What is set forth above herein establishes Defendant is wholly "*incompetent*" and must be removed from office on that basis. That is, Defendant has acted with gross ignorance of his official duties or gross carelessness in the discharge of those duties²⁹. When Defendant executed and filed Defendant's affidavits with the Comptroller's judiciary section, he swore under penalty of perjury "*that at least 40 percent of the functions that Defendant performs are judicial*

²⁹ *Local Government Code* § 87.011(2) (A) & (B).

functions.” In other words, Defendant falsely swore that at least 40 percent of the functions Defendant has performed amount to Defendant exercising civil jurisdiction, criminal jurisdiction, or serving as a magistrate. **Defendant has never done any of these functions.**

B. Removal under *Local Government Code* § 87.013(a)(2).

37. Plaintiff incorporates the preceding paragraphs as if fully repeated here.

38. What is set forth above herein establishes Defendant’s actions amount to “*official conduct*,” and Defendant must be removed from office on that basis. Defendant has violated a specific statutory duty and that is unlawful conduct³⁰. More clearly, Defendant (by taking the Judicial Functions Salary) assumed the responsibility of ensuring “*that at least 40 percent of the functions that Defendant performs are judicial functions.*” Because he did not perform any judicial functions, Defendant violated the foregoing duty. Defendant also engaged in conduct without reasonable grounds to believe the act lawful³¹. When Defendant executed and filed affidavits with the Comptroller’s judiciary section, he swore under penalty of perjury “*that at least 40 percent of the functions that Defendant performs are judicial functions,*” he (nor any other reasonable human-being) could have honestly believed that it would be lawful to take tens of thousands of dollars for doing nothing.

C. Removal under *Texas Const. Art. 5* § 24.

39. Plaintiff incorporates the preceding paragraphs as if fully repeated here.

³⁰ *Stern v. State ex rel. Ansel*, 869 S.W.2d 614,619–23 (Tex. App.Houston [14th Dist.] 1994, writ denied). *State ex rel. Edwards v. Reyna*, 160 Tex. 404, 333 S.W.2d 832 (1960).

³¹ *Meyer v. Tunks*, 360 S.W.2d 518 (Tex.1962) (orig. proceeding); *State ex rel. Edwards v. Reyna*, 160 Tex. 404, 333 S.W.2d 832 (1960).

40. Plaintiff incorporates by reference the arguments made in paragraphs 35-39 as if fully repeated, inasmuch as such arguments can be made under *Texas Const. Art. 5 § 24* and Chapter 87, *Local Government Code*.

41. In addition to the “*incompetency*” and “*official misconduct*,” the Texas Const. also allows for removal based on “*other causes defined by law*.” Plaintiff incorporates by reference the arguments made in paragraphs 33-34 as if fully repeated

D. Suspension under *Local Government Code* § 87.017.

42. Plaintiff incorporates the preceding paragraphs as if fully repeated here.

43. After the issuance of the order requiring citation of the officer, a district judge may temporarily suspend the officer and may appoint another person to perform the duties of the office³².

44. Plaintiff requests that this Court immediately suspend Defendant from serving as Hays County Judge and appoint another person to perform Defendant’s duties as Hays County Judge. In considering doing as much, there is no real instructive authority, other than authority that acknowledges the general authority to suspend. That being said, the egregious nature of Defendant’s acts must be taken into consideration. An elected official that is willing to blatantly mis-state the truth for his own financial gain, and to the detriment of the taxpayers, is not worthy of the position to which he was elected.

IX. DECLARATION OF PLAINTIFF

45. Plaintiff swears to the filing of this petition, as required by *Local Government Code* § 87.015(b)³³.

³² *Local Government Code* § 87.017

³³ *See* Exhibit D

PRAYER

For these reasons, Plaintiff prays this Court:

- (1) issue orders requiring citation issue, and that citation and a certified copy of this petition be served on Defendant ordering Defendant to appear and answer on the date set by the Court and after the fifth (5th) day the citation is served;
- (2) temporarily suspend Defendant from the office of County Judge of Hays County, Texas, and appoint another person, as designated by the Court, to perform the duties of County Judge of Hays County, Texas;
- (3) all costs be assessed against Defendant; and
- (4) all such other and further relief in law and equity to which he may show himself justly entitled.

Respectfully submitted,

THE WYMORE LAW FIRM, PLLC

/s/ Kent E. Wymore IV
Kent E. Wymore IV
State Bar No. 24075315
1250 Capital of Texas Highway South
Building Three, Suite 400
Austin, Texas 78746
Tel: (512) 346-3600
Fax: (866) 211-4235
kent@thewymorelawfirm.com

-AND-

LAW OFFICE OF BRIAN W. BISHOP
900 West Avenue
Austin, Texas 78701
Tel: (512) 327-5121
Fax: (512) 327-5122

By: /s/ Brian W. Bishop
Brian W. Bishop
State Bar No. 02346300
brian@bbishoplaw.com

ATTORNEYS FOR PLAINTIFF

DESCRIPTIVE SUMMARY

Texas Courts: A Descriptive Summary



As reflected on page 3, there were 2,809 elected (or appointed, in the case of most municipal judges) judges in Texas as of September 1, 2014. In addition, there were more than 140 associate judges appointed to serve in district, county-level, child protection, and child support (Title IV-D) courts, as well as numerous magistrates, masters, referees and other officers supporting the judiciary. More than 300 retired and former judges were also eligible to serve for assignment.

The basic structure of the present court system of Texas was established by an 1891 constitutional amendment. The amendment established the Supreme Court as the highest state appellate court for civil matters, and the Court of Criminal Appeals, which makes the final determination in criminal matters. Today, there are also 14 courts of appeals that exercise intermediate appellate jurisdiction in civil and criminal cases.

District courts are the state trial courts of general jurisdiction. The geographical area served by each district court is established by the specific statute creating that court.

In addition to these state courts, the Texas Constitution provides for a county court in each county, presided over by the county judge. The county judge also serves as head of the county commissioners court, the governing body of the county. To aid the constitutional county court with its judicial functions, the Legislature has established statutory county courts, generally designated as county courts at law or statutory probate courts, in the more populous counties.

The Texas Constitution also authorizes not less than one nor more than 16 justices of the peace in each county. The justice courts generally have exclusive jurisdiction of civil matters when the amount in controversy does not exceed \$200 and concurrent jurisdiction with the county courts when the amount in controversy exceeds \$200 but does not exceed \$10,000. They also have jurisdiction in misdemeanor cases where punishment upon conviction may be by fine only.

By statute, the Legislature has created municipal courts in each incorporated city in the state. These courts have original jurisdiction over violations of municipal ordinances and concurrent jurisdiction with the justice courts over misdemeanor state law violations, limited to the geographical confines of the municipality. Municipal courts also have civil jurisdiction limited to a few specific types of cases.

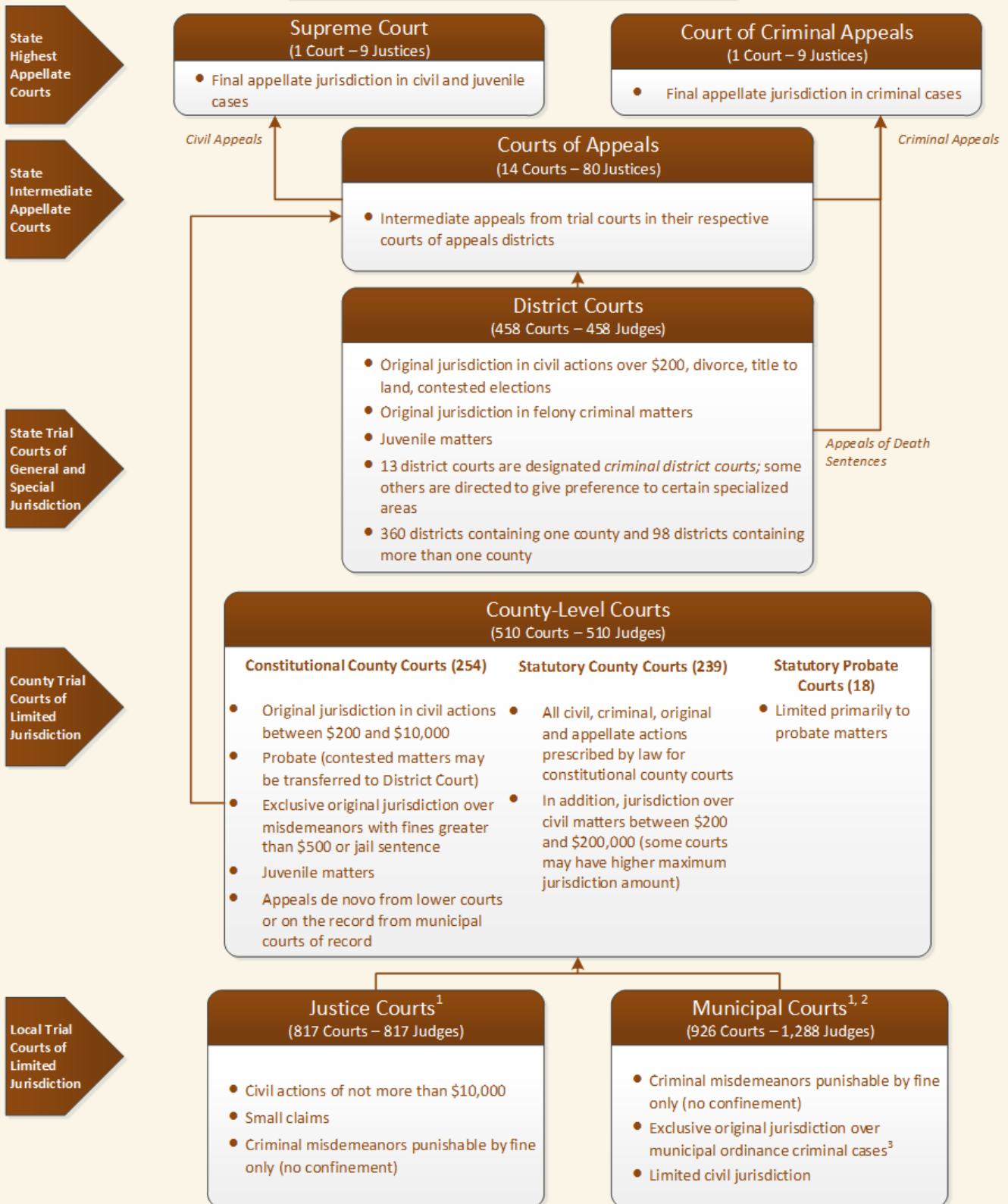
Trials in the justice courts and most municipal courts are not of record, and appeals therefrom are by new trial ("*trial de novo*") to the county court, except in certain counties, where the appeal is to a county court at law or to a district court. When an appeal is by trial *de novo*, the case is tried again in the higher court, just as if the original trial had not occurred.

Jurisdiction of the various levels of courts is established by constitutional provision and by statute. Statutory jurisdiction is established by general statutes providing jurisdiction for all courts on a particular level, as well as by the statutes establishing individual courts. Thus, to determine the jurisdiction of a particular court, recourse must be had first to the Constitution, second to the general statutes establishing jurisdiction for that level of court, third to the specific statute authorizing the establishment of the particular court in question, fourth to statutes creating other courts in the same county (whose jurisdictional provisions may affect the court in question), and fifth to statutes dealing with specific subject matters (such as the Family Code, which requires, for example, that judges who are lawyers hear appeals from cases heard by non-lawyer judges in juvenile cases).



Court Structure of Texas

September 1, 2014



1. All justice courts and most municipal courts are not courts of record. Appeals from these courts are by trial *de novo* in the county-level courts, and in some instances in the district courts.

2. Some municipal courts are courts of record—appeals from the courts are taken on the record to the county-level courts. As of March 2014, 158 courts indicated that they were a court of record; a list is posted at <http://www.txcourts.gov/media/848130/Municipal-courts-of-record-2015.xlsx>.

3. An offense that arises under a municipal ordinance is punishable by a fine not to exceed: (1) \$2,000 for ordinances that govern fire safety, zoning, and public health or (2) \$500 for all others.

Funding of the Texas Judicial Branch

The State provides funding for salaries and operating costs of the Supreme Court, Court of Criminal Appeals and 14 intermediate appellate courts. The State funds a base salary for district judges and salary supplements for certain constitutional and statutory county court judges, as well as salaries, salary supplements, retirement and other payroll-related benefits for certain prosecutors. The State also pays for or supplements some other expenses of the judicial branch, including juror pay, basic civil legal services, indigent defense, electronic filing, and special prosecution units. Most counties supplement the base salary of judges of the intermediate appellate courts and district courts. Counties pay the operating costs of district courts, as well as the base salary of judges, full salaries of other staff, and operating costs for constitutional county courts, county courts at law, and justice courts. Cities finance all costs related to the operation of municipal courts, including judges' salaries.

In FY 2014, original state appropriations for the Texas judicial system increased by 20.7 percent from the previous fiscal year and accounted for approximately 0.39 percent of all state appropriations (\$388,375,252 of the \$100,766,914,201 appropriated from all funds in FY 2014). Nearly 57 percent of the financing for the judicial system came from General Revenue. Another 19.8 percent came from dedicated General Revenue funds, such as the Fair Defense Account and the Judicial and Court Personnel Training Fund, while the remaining amounts came from other special funds, including the Judicial Fund, and federal funds.

Salaries for district judges accounted for 16.9 percent of appropriations for the judicial system, and judicial retirement and benefits comprised another 10.5 percent.

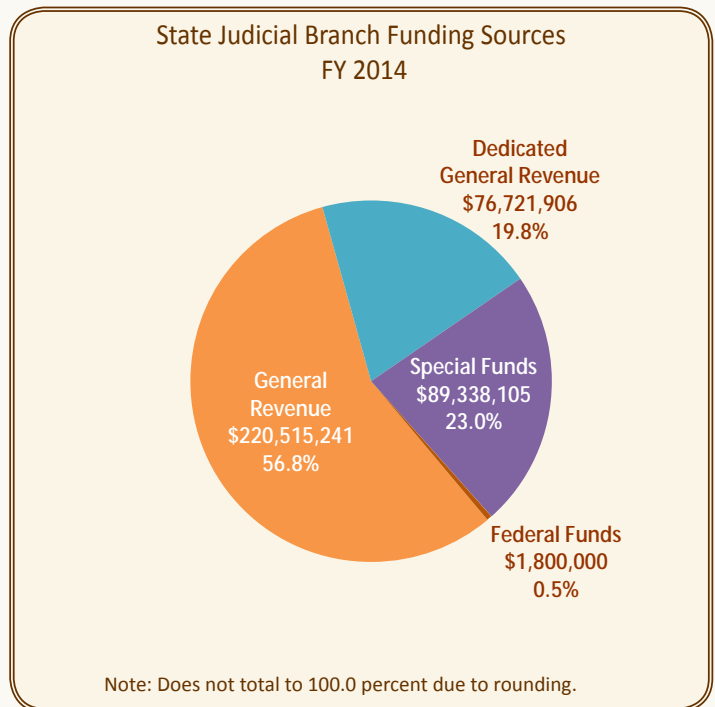


Figure 1 - State Judicial Branch Funding Sources

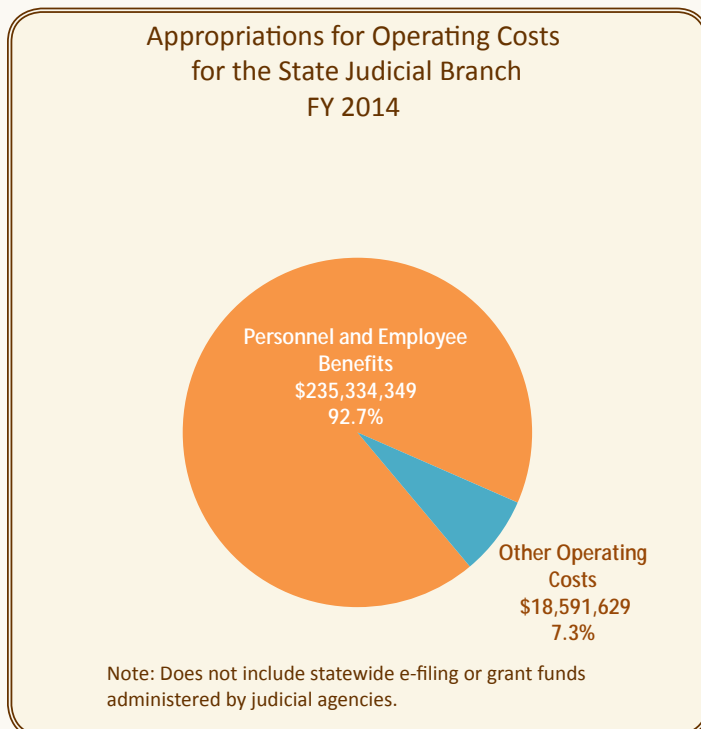


Figure 2 - Appropriations for Operating Costs for the State Judicial Branch

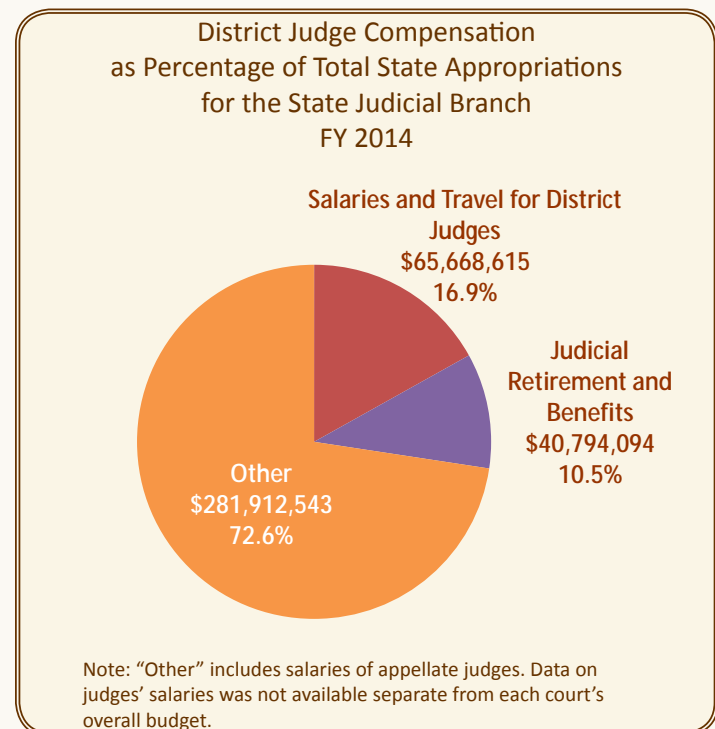
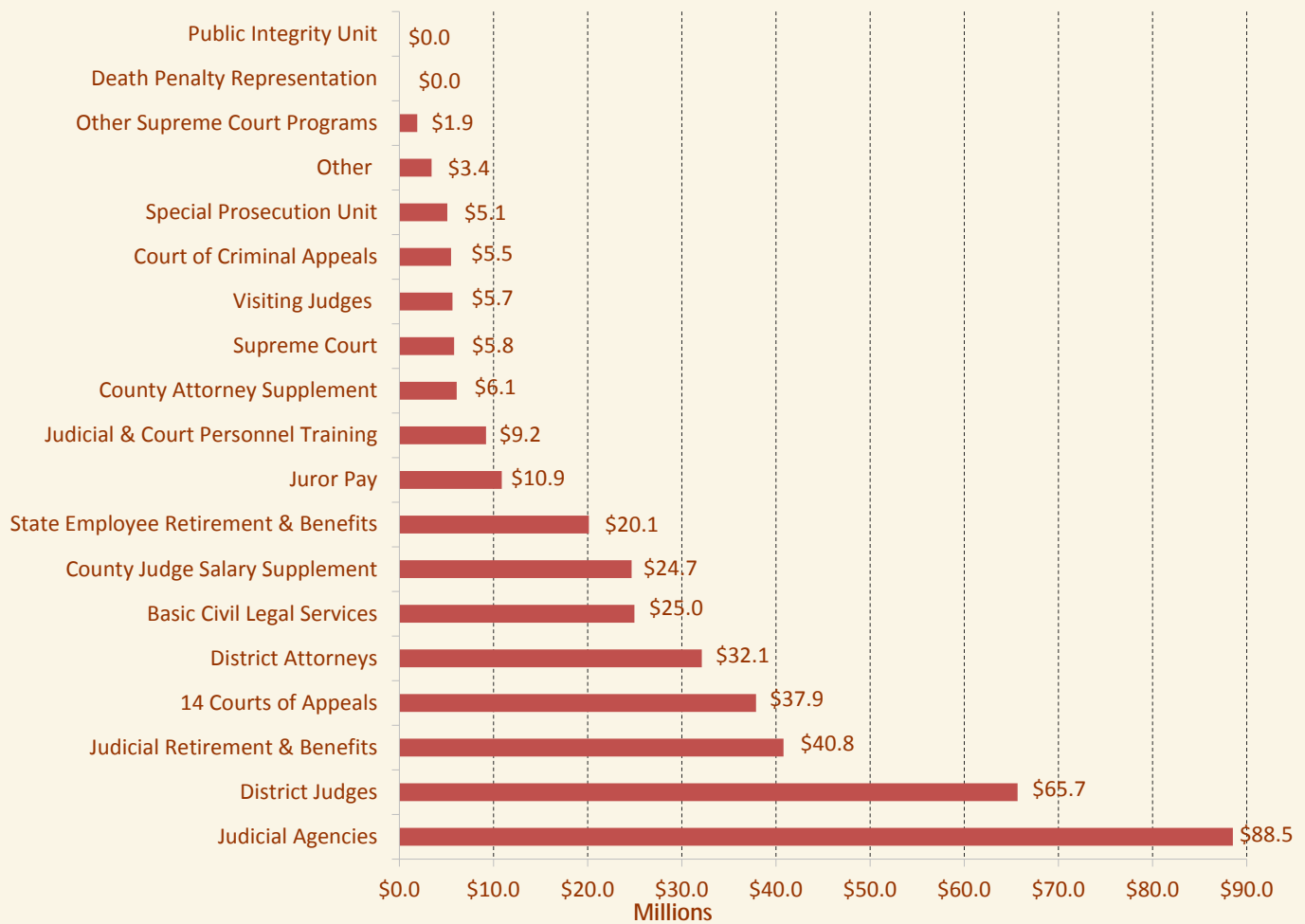


Figure 3 - District Judge Compensation as Percentage of Total

State Judicial Branch Appropriations, FY 2014



Notes:

1. "Visiting Judges" includes salaries and per diem expenses.
2. "Other" includes Social Security and Benefit Replacement Pay and lease payments.
3. "Judicial Agencies" include the Office of Court Administration, Texas Judicial Council, Office of the State Prosecuting Attorney, Office of Capital Writs, State Law Library, and State Commission on Judicial Conduct. Appropriations for Judicial Agencies include approximately \$7.5 million in interagency contracts.
4. "District Judges" includes salaries, travel, and local administrative judge salary supplement.

Figure 4 - State Judicial Branch Appropriations, FY 2014

Court Structure and Function

Appellate Courts

The appellate courts of the Texas Judicial System are:

- The Supreme Court, the highest state appellate court for civil and juvenile cases
- The Court of Criminal Appeals, the highest state appellate court for criminal cases
- The 14 courts of appeals, the intermediate appellate courts for civil and criminal appeals from the trial courts

Appellate courts do not try cases, have juries, or hear witnesses. Rather, they review actions and decisions of the lower courts on questions of law or allegations of procedural error. In carrying out this review, the appellate courts are usually restricted to the evidence and exhibits presented in the trial court.

The Supreme Court

In most civil and juvenile cases, the Supreme Court has statewide, final appellate jurisdiction

The Supreme Court of Texas was first established in 1836 by the Constitution of the Republic of Texas, which vested the judicial power of the Republic in "...one Supreme Court and such inferior courts as the Congress may establish." This court was re-established by each successive constitution adopted throughout the course of Texas history and currently consists of one chief justice and eight justices.¹

The Supreme Court has statewide, final appellate jurisdiction in most civil and juvenile cases.² Its caseload is directly affected by the structure and jurisdiction of Texas' appellate court system, as the 14 courts of appeals handle most of the state's criminal and civil appeals from the district and county-level courts, and the Court of Criminal Appeals handles all criminal appeals beyond the intermediate courts of appeals.



Supreme Court of Texas Courtroom, Austin, Texas

The Supreme Court's caseload can be broken down into three broad categories:

- Determining whether to grant review of the final judgment of a court of appeals (i.e., to grant or not grant a petition for review)
- Disposition of regular causes³ (i.e., granted petitions for review, accepted petitions for writs of mandamus or habeas corpus, certified questions, accepted parental notification appeals, and direct appeals)
- Disposition of numerous motions related to petitions and regular causes

Much of the Supreme Court's time is spent determining which petitions for review will be granted, as it must consider all petitions for review that are filed. However, the Court exercises some control over its caseload in deciding which petitions will be granted. The Court usually takes only those cases

¹ The various constitutions and amendments provided for different numbers of judges to sit on the Court and different methods for the selection of the judges. The Constitution of 1845 provided that the Supreme Court consist of a chief justice and two associate justices. The Constitution of 1866 provided for five justices, and the Constitution of 1869 reverted to a three-judge court; the Constitution of 1873 increased the number to five, and the Constitution of 1876 again reduced the membership to three. To aid the three justices in disposing of the ever increasing workload, the Legislature created two "Commissions of Appeals," each to consist of three judges appointed by the Supreme Court. This system, begun in 1920, continued until the adoption of the constitutional amendment of 1945 which abolished the two Commissions of Appeals and increased the number of justices on the Supreme Court to nine, the present number.

² A constitutional amendment adopted in 1980 provides that "The Supreme Court shall exercise the judicial power of the state except as otherwise provided in this Constitution. Its jurisdiction shall be coextensive with the limits of the State and its determinations shall be final except in criminal law matters. Its appellate jurisdiction shall be final and shall extend to all cases except in criminal law matters and as otherwise provided in this Constitution or by law."

³ "Regular causes" involve cases in which four or more of the justices of the Supreme Court have decided in conference that a petition for review, petition for writ of mandamus or habeas corpus, or parental notification appeal should be reviewed. Regular causes also include direct appeals the court has agreed to review and questions of law certified to it by a federal appellate court that the court has agreed to answer. Most regular causes are set for oral argument in open court and are reported in written opinions. However, a petition may be granted and an unsigned opinion (per curiam) issued without oral argument if at least six members of the court vote accordingly.

that present the most significant Texas legal issues in need of clarification.

The Supreme Court also has jurisdiction to answer questions of state law certified from a federal appellate court;⁴ has original jurisdiction to issue writs and to conduct proceedings for the involuntary retirement or removal of judges; and reviews cases involving attorney discipline upon appeal from the Board of Disciplinary Appeals of the State Bar of Texas.

In addition, the Court:

- Promulgates all rules of civil trial practice and procedure, evidence, and appellate procedure;
- Promulgates rules of administration to provide for the efficient administration of justice in the state;
- Monitors the caseloads of the 14 courts of appeals and orders the transfer of cases between the courts in order to make the workloads more equal;⁵
- With the assistance of the Texas Equal Access to Justice Foundation, administers funds for the Basic Civil Legal Services Program, which provides basic civil legal services to the indigent.⁶

The Court of Criminal Appeals

To relieve the Supreme Court of some of its caseload, the Constitution of 1876 created the Court of Appeals, composed of three elected judges, with appellate jurisdiction in all criminal cases and in those civil cases tried by the county courts. In 1891, a constitutional amendment:

- Changed the name of this court to the Court of Criminal Appeals
- Limited its jurisdiction to appellate jurisdiction in criminal cases only
- Increased the number of judges to nine: one presiding judge and eight associate judges⁷

The Court of Criminal Appeals is the highest state court for criminal appeals.⁸ Its caseload consists of both mandatory and discretionary matters. All cases that result in the death penalty are automatically directed to the Court of Criminal Appeals from the trial court level. A significant portion of the Court's workload also involves the mandatory review of applications for post conviction habeas corpus relief in felony cases without a death penalty,⁹ over which the Court has sole authority. In addition, decisions made by the intermediate courts of appeals in criminal cases may be appealed to the Court of Criminal Appeals by petition for discretionary review, which may be filed by the State, the defendant, or both. However, the Court may also review a decision on its own motion.



Court of Criminal Appeals Courtroom, Austin, Texas

⁴ A constitutional amendment, effective January 1, 1986, gave the Supreme Court, along with the Court of Criminal Appeals, jurisdiction to answer certified questions.

⁵ The Supreme Court has a rider in its appropriation pattern in the General Appropriations Act (S.B. 1, 83rd Leg., R.S., Art. IV, page IV-2, Rider 3) that states, "It is the intent of the Legislature that the Supreme Court use funds appropriated above to equalize the dockets of the 14 Courts of Appeals. For the purposes of this rider equalization shall be considered achieved if the new cases filed each year per justice are equalized by 10 percent or less among all the courts of appeals. Multi-district litigation cases are exempted from this provision." Although the rider requiring the transfer of cases first appeared in fiscal year 2000 in the General Appropriations Act (H.B. 1, 76th Leg., R.S., Art. IV, page IV-1, Rider 3), the Supreme Court has transferred cases between the courts of appeals since 1895 (24th Leg., R.S., Ch. 53, 1895 Tex. Gen. Laws 79).

⁶ In 1997, the 75th Legislature enacted Chapter 51, Texas Government Code, Subchapter J, requiring the Supreme Court to administer funds for provision of basic civil legal services to the indigent. (In 1999, this was re-lettered as Subchapter L.)

⁷ The Court of Criminal Appeals was originally composed of three judges. As the court's workload increased, the Legislature granted it the authority to appoint commissioners to aid in the disposition of pending cases. In 1966, a constitutional amendment increased the number of judges on the court to five, and in 1977, a further amendment to the constitution added another four judges, for the current total of nine judges on the court.

⁸ A constitutional amendment adopted in 1980 provides that "The Court of Criminal Appeals shall have final appellate jurisdiction coextensive with the limits of the State, and its determination shall be final, in all criminal cases of whatever grade, with such exceptions and under such regulations as may be provided in this Constitution or as prescribed by law."

⁹ Under Article 11.07, Texas Code of Criminal Procedure.

In conjunction with the Supreme Court of Texas, the Court of Criminal Appeals promulgates rules of appellate procedure and rules of evidence for criminal cases. The Court of Criminal Appeals also administers public funds that are appropriated for the education of judges, prosecuting attorneys, criminal defense attorneys who regularly represent indigent defendants, clerks and other personnel of the state's appellate, district, county-level, justice, and municipal courts.¹⁰

The Courts of Appeals

The first intermediate appellate court in Texas was created by the Constitution of 1876, which created a Court of Appeals with appellate jurisdiction in all criminal cases and in all civil cases originating in the county courts. In 1891, an amendment was added to the Constitution authorizing the Legislature to establish intermediate courts of civil appeals located at various places throughout the state. The purpose of this amendment was to preclude the large quantity of civil litigation from further congesting the docket of the Supreme Court, while providing for a more convenient and less expensive system of intermediate appellate courts for civil cases. In 1980, a constitutional amendment extended the appellate jurisdiction of the courts of civil appeals to include criminal cases and changed the name of the courts to the "courts of appeals."

Each court of appeals has jurisdiction over appeals from the trial courts located in its respective district. The appeals heard in these courts are based upon the "record" (a written transcription of the testimony given, exhibits introduced, and the documents filed in the trial court) and the written and oral arguments of the appellate lawyers. The courts of appeals do not receive testimony or hear witnesses in considering the cases on appeal, but they may hear oral argument on the issues under consideration.

The Legislature has divided the state into 14 court of appeals districts and has established a court of appeals in each. One court of appeals is currently located in each of the following cities:

- Amarillo
- Austin
- Beaumont
- Corpus Christi/Edinburg
- Dallas
- Eastland
- El Paso
- Fort Worth
- San Antonio
- Texarkana
- Tyler
- Waco
- Houston (2)

Each of the courts of appeals has at least three justices—a chief justice and two associate justices. There are now 80 justices serving on the 14 intermediate courts of appeals. However, the Legislature is empowered to increase this number whenever the workload of an individual court requires additional justices.

80 justices
14 intermediate courts of appeals

Trial Courts

In trial courts:

- Witnesses are heard
- Testimony is received
- Exhibits are offered into evidence
- A verdict is rendered

The trial court structure in Texas has several different levels, each level handling different types of cases, with some overlap. The state trial court of general jurisdiction is known as the district court. The county-level courts consist of the constitutional county courts, statutory county courts, and statutory probate courts. In addition, there is at least one justice court located in each county, and there are municipal courts located in each incorporated city.



District Courts

District courts are the primary trial courts in Texas. The Constitution of the Republic provided for not less than three or more than eight district courts, each having a judge elected by a joint ballot of both houses of the Legislature for a term of four years. Most constitutions of the state continued the district courts but provided that the judges were to be elected by the qualified voters. (The exceptions were the Constitutions of 1845 and 1861 which provided for the appointment of judges by the Governor with confirmation by the Senate). All constitutions have provided that the judges of these courts must be chosen from defined districts (as opposed to statewide election). In many locations, the geographical jurisdiction of two or more district courts is overlapping. As of September 1, 2014, there were 458 district courts in Texas.

458 Texas
district courts
in 2014

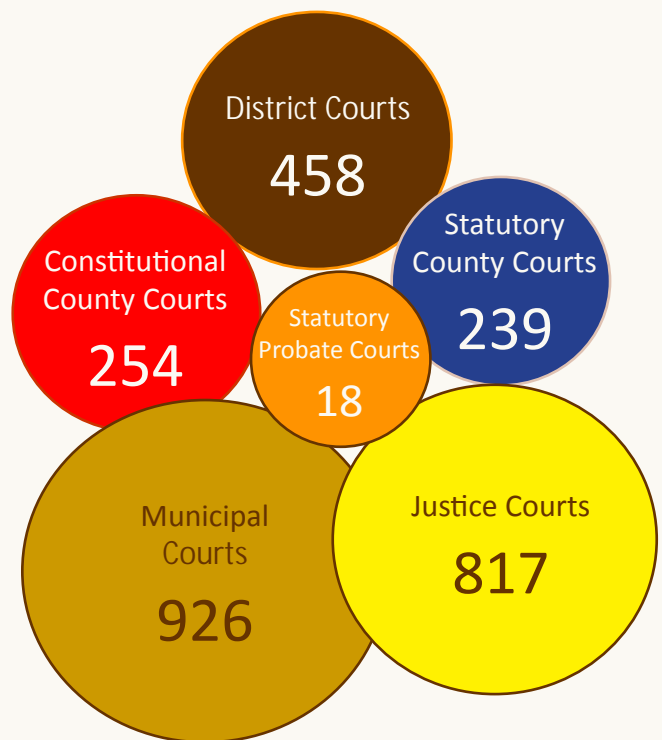
¹⁰ In accordance with Chapter 56 and Section 74.025, Texas Government Code.

District courts are courts of general jurisdiction. Article V, Section 8 of the Texas Constitution extends a district court's potential jurisdiction to "all actions" but makes such jurisdiction relative by excluding any matters in which exclusive, appellate, or original jurisdiction is conferred by law upon some other court. For this reason, while one can speak of the "general" jurisdiction of a district court, the actual jurisdiction of any specific court will always be limited by the constitutional or statutory provisions that confer exclusive, original, or appellate jurisdiction on other courts serving the same county or counties.

With this caveat, it can be said that district courts generally have the following jurisdiction:

- Original jurisdiction in all criminal cases of the grade of felony and misdemeanors involving official misconduct;
- Cases of divorce;
- Suits for title to land or enforcement of liens on land;
- Contested elections;
- Suits for slander or defamation;
- Suits on behalf of the State for penalties, forfeitures and escheat.

Most district courts exercise criminal and civil jurisdiction, but in the metropolitan areas there is a tendency for the courts to specialize in civil, criminal, juvenile or family law matters. Thirteen district courts are designated "criminal district courts" but have general jurisdiction. A limited number of district courts also exercise the subject-matter jurisdiction normally exercised by county courts.



The district courts also have jurisdiction in civil matters with a minimum monetary limit but no maximum limit. The amount of the lower limit has for many years been the subject of controversy, with differing opinions from the courts of appeal. House Bill 79 from the 82nd Legislature, 1st Called Session (2011) included a provision in Section 24.007(b) of the Government Code which was intended to resolve the dispute and to set the minimum jurisdiction of district courts at \$500. However, there is still a potential conflict between Article V, Section 8 of the Texas Constitution (which gives the district courts jurisdiction of all actions...except in cases where exclusive) and the amendment. Therefore, there are still differing opinions as to whether the minimum monetary jurisdiction of the district courts is \$200.01 or \$500. In counties having statutory county courts, the district courts generally have exclusive jurisdiction in civil cases where the amount in controversy is \$200,000 or more, and concurrent jurisdiction with the statutory county courts in cases where the amount in controversy exceeds \$500 but is less than \$200,000.

The district courts may also hear contested matters in probate cases and have general supervisory control over commissioners courts. In addition, district courts have the power to issue writs of habeas corpus, mandamus, injunction, certiorari, sequestration, attachment, garnishment, and all writs necessary to enforce their jurisdiction. Appeals from judgments of the district courts are to the courts of appeals (except appeals of death sentences).

A 1985 constitutional amendment established the Judicial Districts Board to reapportion Texas judicial districts, subject to legislative approval. The same amendment also allows for more than one judge per judicial district.

County-Level Courts

Constitutional County Courts

The Texas Constitution provides for a county court in each of the 254 counties of the state, though all such courts do not exercise judicial functions. In populous counties, the "county judge" may devote his or her full attention to the administration of county government.

Generally, the "constitutional" county courts have:

- Concurrent jurisdiction with justice courts in civil cases where the matter in controversy exceeds \$200 but does not exceed \$10,000
- Concurrent jurisdiction with the district courts in civil cases where the matter in controversy exceeds \$500 but does not exceed \$5,000
- General jurisdiction over probate cases
- Juvenile jurisdiction
- Exclusive original jurisdiction over misdemeanors, other than those involving official misconduct, where punishment for the offense is by fine exceeding \$500 or a jail sentence not to exceed one year

County courts generally have appellate jurisdiction (usually by trial *de novo*) over cases tried originally in the justice and municipal courts. Original and appellate judgments of the county courts may be appealed to the courts of appeals.

In 36 counties, the county court, by special statute, has been given concurrent jurisdiction with the justice courts in all civil matters over which the justice courts have jurisdiction.

Statutory County Courts and Probate Courts

Under its constitutional authorization to “...establish such other courts as it may deem necessary... [and to] conform the jurisdiction of the district and other inferior courts thereto,” the Legislature created the first statutory county court in 1907 to relieve the county judge of some or all of the judicial duties of office. As of September 1, 2014, 238 statutory county courts and 18 statutory probate courts were operating in 88 counties, and one multi-county court operated in three counties. Statutory county courts include:

- County courts at law
- County civil courts at law
- County criminal courts at law
- County criminal courts
- County criminal courts of appeal

Section 25.003 of the Texas Government Code provides statutory county courts with jurisdiction over all causes and proceedings prescribed by law for constitutional county courts. In general, statutory county courts that exercise civil jurisdiction concurrent with the constitutional county court also have concurrent civil jurisdiction with the district courts in: 1) civil cases in which the matter in controversy exceeds \$500 but does not exceed \$200,000, and 2) appeals of final rulings and decisions of the Texas Workers’ Compensation Commission. However, the actual jurisdiction of each statutory county court varies considerably according to the statute under which it was created. A few statutory county courts even hear felony cases. In addition, some of these courts have been established to exercise subject-matter jurisdiction in only limited fields, such as civil, criminal, or appellate cases (from justice or municipal courts).

In general, statutory probate courts have general jurisdiction provided to probate courts by the Texas Estates Code, as well as the jurisdiction provided by law for a county court to hear and determine cases and matters instituted under various sections and chapters of the Texas Health and Safety Code.

Associate Judges

The Legislature has authorized the appointment of various judicial officers to assist the judges of the district courts and county-level courts. These judicial officers are usually known as associate judges. They have some, but not all, of the powers of the judges they assist.

Judicial Officers Appointed under Government Code, Chapter 54 and Chapter 54A

Chapter 54A of the Government Code authorizes the appointment of criminal associate judges, civil associate judges, statutory probate court associate judges, and associate judges for juvenile matters to assist district and county-level judges with their caseloads. Chapter 54 also contains provisions for the appointment of masters, magistrates, and hearing officers in certain counties identified by population and the following counties: Bexar, Brazoria, Burnet, Cameron, Comal, Dallas, El Paso, Harris, Lubbock, Tarrant, Travis, and Webb.

Cases are not directly filed with judicial officers, but are referred to them by district judges and county-level judges. Rather than rendering final orders, the judicial officers generally make recommendations to the referring court. Generally, judicial officers appointed under Chapter 54 and Chapter 54A of the Government Code are appointed by local judges with the consent of the county commissioners court, and the positions are funded by the county.

Associate Judges Appointed under Family Code, Chapter 201

Like judicial officers appointed under Chapter 54 and Chapter 54A of the Government Code, district and county-level judges refer certain cases to associate judges appointed under Chapter 201 of the Family Code.

Three types of associate judges are appointed under Chapter 201. Associate judges authorized by Subchapter A of Chapter 201 are appointed by local judges with the consent of the commissioners court and are county employees. They are authorized to hear cases brought under Titles 1, 4 and 5 of the Family Code.

Associate judges authorized by Subchapters B and C of Chapter 201 are appointed by the presiding judge of the respective administrative judicial regions and are generally state employees.¹¹ The associate judges appointed under Subchapter B are authorized to hear child support cases. Those appointed under Subchapter C are authorized to hear child protection cases. As of September 1, 2014, there were 45 child support associate judges and 20 child protection associate judges.

¹¹ The Harris County associate judge appointed under Subchapter C is a county employee.

“Assigned” or “Visiting” Judges

The presiding judge of an administrative judicial region may assign a judge to handle a case or docket of an active judge in the region who is unable to preside (due to recusal, illness, vacation, etc.) or who needs assistance with a heavy docket or docket backlog. These “assigned judges” may be active judges of other courts in the region or may be individuals residing in the region who used to serve as active judges. Sections 74.054, 74.056, and 74.057 of the Government Code discuss the assignment of judges by the presiding judges and the chief justice of the Supreme Court.

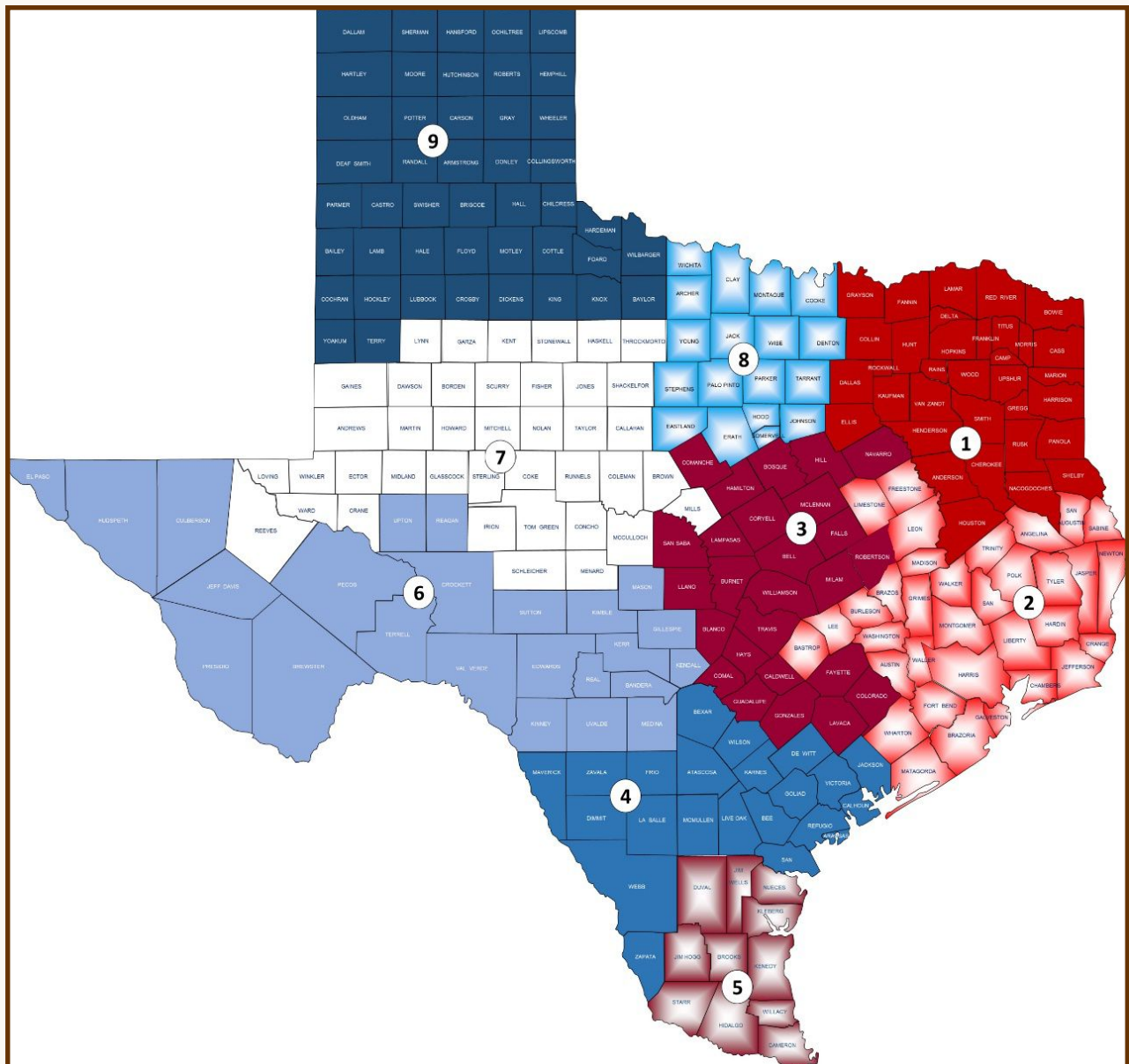


Figure 5 - Administrative Judicial Regions

Assigned Judges in the Trial Courts

Statistics For the Fiscal Year Ended August 31, 2014

	<u>1st</u> <u>Region</u>	<u>2nd</u> <u>Region</u>	<u>3rd</u> <u>Region</u>	<u>4th</u> <u>Region</u>	<u>5th</u> <u>Region</u>	<u>6th</u> <u>Region</u>	<u>7th</u> <u>Region</u>	<u>8th</u> <u>Region</u>	<u>9th</u> <u>Region</u>	<u>Total</u>
By the Chief Justice of the Supreme Court¹										
Assignments to the Administrative Regions:										
Number of Assignments:										
Senior/Former Appellate Judges	0	0	0	0	0	0	0	0	0	0
Active District Judges	0	0	1	0	0	1	0	0	0	2
Senior/Former District Judges	0	0	0	0	0	0	0	0	0	0
Active Statutory County Court Judges	0	0	0	0	0	0	0	0	0	0
Retired/Former Statutory County Court Judges	0	0	0	0	0	0	0	0	0	0
TOTAL Assignments	0	0	1	0	0	1	0	0	0	2
Days Served:										
Senior/Former Appellate Judges	0.0	0.0	0.0	0.0	0.0	0.0	0.0	0.0	0.0	0.0
Active District Judges	0.0	0.0	0.0	0.0	0.0	1.0	0.0	0.0	0.0	1.0
Senior/Former District Judges	0.0	0.0	0.0	0.0	0.0	0.0	0.0	0.0	0.0	0.0
Active Statutory County Court Judges	0.0	0.0	0.0	0.0	0.0	0.0	0.0	0.0	0.0	0.0
Retired/Former Statutory County Court Judges	0.0	0.0	0.0	0.0	0.0	0.0	0.0	0.0	0.0	0.0
TOTAL Days Served	0.0	0.0	0.0	0.0	0.0	1.0	0.0	0.0	0.0	1.0
By Presiding Judges of Administrative Regions¹										
Assignments within the Administrative Regions:										
Number of Assignments:										
Active Appellate Judges	0	0	0	0	0	0	0	0	0	0
Senior/Former Appellate Judges	114	158	41	34	118	36	5	34	17	557
Active District Judges	34	142	9	17	46	19	20	63	74	424
Senior/Former District Judges	612	796	483	303	227	127	210	772	102	3,632
Active Statutory County Court Judges	11	44	4	0	0	2	10	13	12	96
Retired/Former Statutory County Court Judges	47	201	61	107	47	37	22	32	57	611
TOTAL Assignments	818	1,341	598	461	438	221	267	914	262	5,320
Days Served:										
Active Appellate Judges	0.0	0.0	0.0	0.0	0.0	0.0	0.0	0.0	0.0	0.0
Senior/Former Appellate Judges	228.0	364.0	63.0	407.0	438.0	114.0	2.0	86.0	17.5	1,719.5
Active District Judges	41.0	51.0	9.0	10.0	114.0	174.0	2.0	71.0	0.0	472.0
Senior/Former District Judges	1,933.0	1,758.0	717.0	818.0	852.0	289.0	241.0	1,665.0	207.5	8,480.5
Active Statutory County Court Judges	18.0	12.0	4.0	0.0	0.0	97.0	0.0	25.0	0.0	156.0
Retired/Former Statutory County Court Judges	124.0	461.0	115.0	147.0	188.0	43.5	22.0	56.0	93.0	1,249.5
TOTAL Days Served	2,344.0	2,646.0	908.0	1,382.0	1,592.0	717.5	267.0	1,903.0	318.0	12,077.5
Assignments from Other Administrative Regions:										
Number of Assignments:										
Senior/Former Appellate Judges	0	11	0	0	0	1	2	0	0	14
Active District Judges	0	4	0	0	0	0	1	0	0	5
Senior/Former District Judges	29	20	15	23	2	26	31	34	27	207
Active Statutory County Court Judges	0	0	1	0	0	0	0	0	0	1
Retired/Former Statutory County Court Judges	0	22	3	8	1	0	1	22	0	57
TOTAL Assignments	29	57	19	31	3	27	35	56	27	284
Days Served:										
Senior/Former Appellate Judges	0.0	40.0	0.0	0.0	0.0	1.0	2.0	0.0	0.0	43.0
Active District Judges	0.0	4.0	0.0	0.0	0.0	5.0	1.0	0.0	0.0	10.0
Senior/Former District Judges	195.0	43.0	34.0	64.5	5.0	62.5	64.0	71.0	23.0	562.0
Active Statutory County Court Judges	0.0	0.0	0.0	0.0	0.0	0.0	0.0	0.0	0.0	0.0
Retired/Former Statutory County Court Judges	0.0	26.0	1.0	26.5	3.0	0.0	1.0	36.0	0.0	93.5
TOTAL Days Served	195.0	113.0	35.0	91.0	8.0	68.5	68.0	107.0	23.0	708.5
By the Supreme Court for Disciplinary Proceedings²										
Number of Assignments--Active District Judges	0	22	4	3	4	0	0	0	0	33
Days Served--Active District Judges	0.0	12.0	0.0	0.0	4.0	0.0	0.0	0.0	0.0	16.0
Total ---Trial Court Assignments										
Number of Assignments	847	1,420	622	495	445	249	302	970	289	5,639
Days Served	2,539.0	2,771.0	943.0	1,473.0	1,604.0	787.0	335.0	2,010.0	341.0	12,803.0
Assignments to Other Administrative Regions	11	7	28	11	1	7	6	9	5	85

Notes:

1. Assignment authorized by Sections 74.056 and 75.002, Texas Government Code.
2. Assignment authorized by Rule 3.02, Texas Rules of Disciplinary Procedure.

Information provided by the Presiding Judges of the Administrative Judicial Regions

Justice Courts

As amended in November 1983, the Texas Constitution provides that each county is to be divided, according to population, into at least one, and not more than eight, justice precincts, in each of which is to be elected one or more justices of the peace. As of September 1, 2014, 817 justice courts were in operation.

817
justice courts

Generally, the justice courts have:

- Original jurisdiction in misdemeanor criminal cases where punishment upon conviction may be by fine only
- Exclusive jurisdiction of civil matters when the amount in controversy does not exceed \$200
- Concurrent jurisdiction with the county courts when the amount in controversy exceeds \$200 but does not exceed \$10,000
- Jurisdiction over forcible entry and detainer cases

Trials in justice courts are not “of record.” Appeals from these courts are by trial *de novo* in the constitutional county court, the county court at law, or the district court.

The justice of the peace also serves in the capacity of a committing magistrate, with the authority to issue warrants for the apprehension and arrest of persons charged with the commission of felony or misdemeanor offenses. As a magistrate, the justice of the peace may hold preliminary hearings, reduce testimony to writing, discharge the accused, or remand the accused to jail and set bail. In addition, the justice of the peace serves as the coroner in those counties where there is no provision for a medical examiner, serves as an ex officio notary public, and may perform marriage ceremonies for additional compensation.

Municipal Courts

Under its constitutional authority to create “such other courts as may be provided by law,” the Legislature has created municipal courts in each incorporated municipality in the state. In lieu of a municipal court created by the Legislature, municipalities may choose to establish municipal courts of record. As of September 1, 2014, there were 927 municipal courts, 158 of which indicated that they were a court of record.

158 municipal courts
are courts of record

The jurisdiction of municipal courts is provided in Chapters 29 and 30 of the Texas Government Code. Municipal courts have:

- Original and exclusive jurisdiction over criminal violations of certain municipal ordinances and airport board rules, orders, or resolutions that do not exceed \$2,000 in some instances and \$500 in others
- Concurrent jurisdiction with the justice courts in certain misdemeanor criminal cases

In addition to the jurisdiction of a regular municipal court, municipal courts of record also have jurisdiction over criminal cases arising under ordinances authorized by certain provisions of the Local Government Code. The municipality may also provide by ordinance that a municipal court of record have additional jurisdiction in certain civil and criminal matters.

Municipal judges also serve in the capacity of a committing magistrate, with the authority to issue warrants for the apprehension and arrest of persons charged with the commission of felony or misdemeanor offenses. As a magistrate, the municipal judge may hold preliminary hearings, reduce testimony to writing, discharge the accused, or remand the accused to jail and set bail.

Trials in municipal courts are not generally “of record”; many appeals go to the county court, county court at law, or district court by a trial *de novo*. Appeals from municipal courts of record are generally heard in the county criminal courts, county criminal courts of appeal or municipal courts of appeal. If none of these courts exist in the county or municipality, appeals are to a county court at law.

Judicial Administration

The Texas Supreme Court has constitutional responsibility for the efficient administration of the judicial system and possesses the authority to make rules of administration applicable to the courts.¹² Under the direction of the chief justice, the Office of Court Administration aids the Supreme Court in carrying out its administrative duties by providing administrative support and technical assistance to all courts in the state.

The Supreme Court and the Texas Legislature also receive recommendations on long-range planning and improvements in the administration of justice from the Texas Judicial Council, a 22-member advisory board composed of appointees of the judicial, executive, and legislative branches of government.

The chief justice of the Supreme Court, presiding judge of the Court of Criminal Appeals, chief justices of each of the 14 courts of appeals, and judges of each of the trial courts are generally responsible for the administration of their respective courts. Furthermore, there is a local administrative district judge in each county, as well as a local administrative statutory county court judge in each county that has a statutory county court. In counties with two or more district courts, a local administrative district judge is elected by the district judges in the county for a term not to exceed two years.¹³ Similarly, in counties with two or more statutory county courts, a local administrative statutory county court judge is elected by the statutory county court judges for a term not to exceed two years. The local administrative judge is charged with implementing the local rules of administration, supervising the expeditious movement of court caseloads, and other administrative duties.¹⁴

To aid in the administration of justice in the trial courts, the state is divided into nine administrative judicial regions. With the advice and consent of the Senate, the Governor appoints one of the active or retired district judges, or a retired appellate court judge who has district court experience residing in each region, as the presiding judge.

The chief justice of the Supreme Court may convene periodic conferences of the chief justices of the courts of appeals, as well as periodic conferences of the nine presiding judges to ensure the efficient administration of justice in the courts of the state.



Supreme Court of Texas Building, Austin, Texas

¹² Article V, Section 31 of the Texas Constitution.

¹³ In accordance with Section 74.091 or Section 74.0911, Texas Government Code.

¹⁴ The administrative responsibilities of the local administrative judge are detailed in Section 74.092, Texas Government Code.

EXHIBIT "A"

From: [Jordan Powell](#)
To: [Debra Anderson](#); "[Kent Wymore](#)"
Cc: "[Brian Bishop](#)"
Subject: RE: Acknowledge Receipt of: Public Information Request - Becerra Judicial Functions
Date: Tuesday, September 8, 2020 12:52:30 PM

Good Afternoon, Mr. Wymore.

There are no records and/or documents responsive to numbers 1 through 4 of your below request. In response to number 6 of your request (please note, there was no number 5 in your request), please utilize this Dropbox link to access those records.

<https://www.dropbox.com/sh/vk7b3gze5vyrrpgf/AACScdwHHN-69S-vmQVRJ1DTa?dl=0>

Please note, we have redacted the personal email address of a member of the public in accordance with Open Records Decision No. 684 (2009). Please let us know if you have any issues accessing the Dropbox link. As such, please consider this request now closed by our office. Thank you.

Jordan M. Powell
Assistant General Counsel
Hays County Office of General Counsel
111 East San Antonio Street, Suite 202
San Marcos, Texas 78666
Phone: (512) 393-2219
Fax: (512) 392-6500

From: Debra Anderson <debra.anderson@co.hays.tx.us>
Sent: Tuesday, September 1, 2020 1:26 PM
To: 'Kent Wymore' <kent@thewymorelawfirm.com>; Jordan Powell <jordan.powell@co.hays.tx.us>
Cc: 'Brian Bishop' <brian@bbishoplaw.com>; Jordan Powell <jordan.powell@co.hays.tx.us>
Subject: Acknowledge Receipt of: Public Information Request - Becerra Judicial Functions

Good Afternoon Mr. Wymore,

HCOGC Ref. #0362-09.1.20 (Wymore)

Our office is in receipt of your Open Record Request, included below for your reference. We will diligently gather responsive information and review that information prior to disclosure. If our review indicates that responsive information is privileged or non-disclosable, then a Request for Ruling will be sent to the Attorney General's Office. The due date for a Request for Ruling is **Wednesday, September 16, 2020**. All information that is not the subject of a Request for Ruling will be provided to you as soon as reasonably possible.

Thank you,

Debra A. Anderson
Public Information Coordinator

Hays County
Office of General Counsel
111 E. San Antonio, Suite 202
San Marcos, Texas 78666
Tel: (512) 393-2219
Fax: (512) 392-6500

Confidentiality Notice: The information contained in this message is covered by the Electronic Communications Act, 18 U.S.C. 2510-2521 and may be privileged and/or confidential and protected from disclosure. Unauthorized review, use, disclosure, or distribution is strictly prohibited. If you are not the intended recipient, please contact sender at (512) 393-2219 or reply by e-mail, and destroy all copies of the original message.

From: Kent Wymore [<mailto:kent@thewymorelawfirm.com>]
Sent: Monday, August 31, 2020 6:53 PM
To: Debra Anderson <debra.anderson@co.hays.tx.us>; Jordan Powell <jordan.powell@co.hays.tx.us>
Cc: 'Brian Bishop' <brian@bbishoplaw.com>
Subject: Public Information Request - Becerra Judicial Functions

Debra & Jordan,

Please disregard the previous public information request and proceed with the following.

- (1) All records and/or documents showing Ruben Becerra exercised "Civil Jurisdiction" (including, but not limited to, Probate matters, JP Appeals, etc.) from the date he was sworn-in as Hays County Judge in January 2019 through the present (this includes all orders that RB signed or filed, or filings that RB submitted to any court in Hays County);
- (2) All records and/or documents showing Ruben Becerra exercised "Criminal Jurisdiction" from the date he was sworn-in as Hays County Judge in January 2019 through the present (this includes all orders that RB signed or filed, or filings that RB submitted to any criminal court in Hays County);
- (3) All records and/or documents showing Ruben Becerra has "sat as a magistrate" from the date he was sworn-in as Hays County Judge in January 2019 through the present (this includes all orders that RB signed or filed, or filings that RB submitted to any court in Hays County);
- (4) All records and/or documents showing Ruben Becerra accessed or utilized the Odyssey System from the date he was sworn-in as Hays County Judge in January 2019 through the present; and

- (6) All email correspondence between the Hays County Office of General Counsel and parties that have made Public Information Requests (between the dates of July 1, 2020 and present) regarding Hays County Judge Ruben Becerra and whether or not Hays County Judge Ruben Becerra has engaged in judicial functions.

Best!

Bud

THE WYMORE LAW FIRM , PLLC
1250 Capital of Texas Highway South
Building Three, Suite 400
Austin, Texas 78746
(512) 346-3600
Fax: (866) 211-4235
kent@thewymorelawfirm.com
www.thewymorelawfirm.com

CONFIDENTIALITY NOTICE: Information contained in this e-mail is attorney-client privileged and confidential information intended for the use of the individual or entity named. If the reader of this message is not the intended recipient, you are hereby notified that any dissemination, distribution, or copying of this communication is strictly prohibited.

IRS CIRCULAR 230 NOTICE: TO ENSURE COMPLIANCE WITH REQUIREMENTS IMPOSED BY THE IRS, WE INFORM YOU THAT ANY U.S. FEDERAL TAX ADVICE CONTAINED IN THIS COMMUNICATION (INCLUDING ANY ATTACHMENTS) IS NOT INTENDED OR WRITTEN TO BE USED, AND CANNOT BE USED, FOR THE PURPOSE OF AVOIDING PENALTIES UNDER THE INTERNAL REVENUE CODE OR PROMOTING, MARKETING, OR RECOMMENDING TO ANOTHER PARTY ANY TRANSACTION OR MATTER ADDRESSED HEREIN

From: Kent Wymore <kent@thewymorelawfirm.com>
Sent: Monday, August 31, 2020 6:50 PM
To: 'debra.anderson@co.hays.tx.us' <debra.anderson@co.hays.tx.us>; 'jordan.powell@co.hays.tx.us' <jordan.powell@co.hays.tx.us>
Cc: 'Brian Bishop' <brian@bbishoplaw.com>
Subject: Public Information Request - Becerra Judicial Functions

Debra & Jordan,

This is a public information request for the following records and/or documents.

- (1) All records and/or documents showing Ruben Becerra exercised "Civil Jurisdiction" (including, but not limited to, Probate matters, JP Appeals, etc.) from the date he was sworn-in as Hays County Judge in January 2019 through the present;

- (2) All records and/or documents showing Ruben Becerra exercised "Criminal Jurisdiction" from the date he was sworn-in as Hays County Judge in January 2019 through the present;
- (3) All records and/or documents showing Ruben Becerra has "sat as a magistrate" from the date he was sworn-in as Hays County Judge in January 2019 through the present;
- (4) All records and/or documents showing Ruben Becerra has Had access to the Odyssey System from the date he was sworn-in as Hays County Judge in January 2019 through the present; and
- (6) All email correspondence between the Hays County Office of General Counsel and parties that have made Public Information Requests (between the dates of July 1, 2020 and present) regarding Hays County Judge Ruben Becerra and whether or not Hays County Judge Ruben Becerra has engaged in judicial functions.

Best!

Bud

THE WYMORE LAW FIRM , PLLC
1250 Capital of Texas Highway South
Building Three, Suite 400
Austin, Texas 78746
(512) 346-3600
Fax: (866) 211-4235
kent@thewymorelawfirm.com
www.thewymorelawfirm.com

CONFIDENTIALITY NOTICE: Information contained in this e-mail is attorney-client privileged and confidential information intended for the use of the individual or entity named. If the reader of this message is not the intended recipient, you are hereby notified that any dissemination, distribution, or copying of this communication is strictly prohibited.

IRS CIRCULAR 230 NOTICE: TO ENSURE COMPLIANCE WITH REQUIREMENTS IMPOSED BY THE IRS, WE INFORM YOU THAT ANY U.S. FEDERAL TAX ADVICE CONTAINED IN THIS COMMUNICATION (INCLUDING ANY ATTACHMENTS) IS NOT INTENDED OR WRITTEN TO BE USED, AND CANNOT BE USED, FOR THE PURPOSE OF AVOIDING PENALTIES UNDER THE INTERNAL REVENUE CODE OR PROMOTING, MARKETING, OR RECOMMENDING TO ANOTHER PARTY ANY TRANSACTION OR MATTER ADDRESSED HEREIN

EXHIBIT "B"

14-0553J11	MEJIA, GEORGE	PARK IN HANDICAP PARKING
14-0554J11	DELEON, TERRY	PARK IN HANDICAP PARKING
14-0557J11	CANNON, RONDA	PARK IN HANDICAP PARKING
14-0560J11	BURLESON, MICHELE	PARK IN HANDICAP PARKING
14-0561J11	ESPINOZA, ENRIQUE C	PARK IN HANDICAP PARKING
14-0562J11	LOTZ, CATHERINE	PARK IN HANDICAP PARKING
14-0563J11	OCASIO, MARIA I	PARK IN HANDICAP PARKING
14-0564J11	JABBIE, KADIATU B	PARK IN HANDICAP PARKING
14-0565J11	OGDEN, LEE	PARK IN HANDICAP PARKING
14-0566J11	MCMILLION, PATSY	PARK IN HANDICAP PARKING
14-0602J11	CALHOUN, CHERYL	PARK IN HANDICAP PARKING
14-0603J11	CARRENO, RENE	PARK IN HANDICAP PARKING
14-0605J11	MOORE, KAREN L	PARK IN HANDICAP PARKING
14-0606J11	CARRILLO, RONALD MICHAEL	PARK IN HANDICAP PARKING
14-0608J11	CASTILLO, HONORATO	PARK IN HANDICAP PARKING
14-0609J11	Walter, Nancy	PARK IN HANDICAP PARKING
14-0611J11	VARGA, SHARON I	PARK IN HANDICAP PARKING
14-0612J11	GONZALES, FLORINDA	PARK IN HANDICAP PARKING
14-0613J11	SERNA, FRANCISCO	PARK IN HANDICAP PARKING
14-0618J11	Paredes, Hortencia E	PARK IN HANDICAP PARKING
14-0620J11	Salinas, Domingo	PARK IN HANDICAP PARKING
14-0621J11	PEREZ, NICHOLAS D	PARK IN HANDICAP PARKING
14-0622J11	Padilla, Ofelia Delgado	PARK IN HANDICAP PARKING
14-0623J11	RODRIGUEZ, JUANA MARIA	PARK IN HANDICAP PARKING
14-0645J11	Kent, Alan John	PARK IN HANDICAP PARKING
14-0646J11	Sedwick, Mariah Lynn	PARK IN HANDICAP PARKING
14-0647J11	KOHLBERG, DORACILLE	PARK IN HANDICAP PARKING
14-0650J11	GUERRERO, ENRIQUE	PARK IN HANDICAP PARKING
14-0651J11	RODRIGUEZ, JOHNNY	PARK IN HANDICAP PARKING
14-0666J11	EPLING, BRENT	PARK IN HANDICAP PARKING
14-0676J11	Johnson, Roger Lee	PARK IN HANDICAP PARKING

14-0677J11	Palos, Tomasa	PARK IN HANDICAP PARKING
14-0722J11	Augustine, Clayton	PARK IN HANDICAP PARKING
14-0723J11	GARLAND INSULATING LTD	PARK IN HANDICAP PARKING
14-0725J11	Regalado, Alma	PARK IN HANDICAP PARKING
14-0726J11	ESTRADA, MARIE	PARK IN HANDICAP PARKING
14-0728J11	HOLMES, TED W	PARK IN HANDICAP PARKING
14-0747J11	Nava, Maria	PARK IN HANDICAP PARKING
14-0750J11	GARCIA, ISMAEL	PARK IN HANDICAP PARKING
14-0754J11	O'Reilly, John J	PARK IN HANDICAP PARKING
14-0783J11	CRUZ, JERRYCA	PARK IN HANDICAP PARKING
14-0786J11	TAYLOR, HARRY J	PARK IN HANDICAP PARKING
14-0787J11	VOLK, DOROTHY S	PARK IN HANDICAP PARKING
14-0788J11	WATSON, CASSANDRA	PARK IN HANDICAP PARKING
14-0789J11	Howze, Cindy	PARK IN HANDICAP PARKING
14-0790J11	Meinen, Mark Edward	PARK IN HANDICAP PARKING
14-0833J11	SMITH, BRYANT KEITH, Jr.	PARK IN HANDICAP PARKING
14-0835J11	JOHNSON, MARGARET	PARK IN HANDICAP PARKING
14-0864J11	PLAHY, DON	PARK IN HANDICAP PARKING
14-0865J11	SPENCE, MARY CASAREZ	PARK IN HANDICAP PARKING
14-0866J11	Yarrow, Janet	PARK IN HANDICAP PARKING
14-0867J11	Josserand, Jean Yoder	PARK IN HANDICAP PARKING
14-0884J11	Cox, Henry	PARK IN HANDICAP PARKING
14-0885J11	FLUKER, RODNEY CONRAD	PARK IN HANDICAP PARKING
14-0890J11	ROSALEZ, EVA	PARK IN HANDICAP PARKING
14-0894J11	EAN HOLDINGS	PARK IN HANDICAP PARKING
14-0895J11	NIPPERT, WAYNE NEWTON	PARK IN HANDICAP PARKING
14-0897J11	Jett, Robert H	PARK IN HANDICAP PARKING
14-0925J11	WOOTEN, PAULA	PARK IN HANDICAP PARKING
14-0926J11	The Mackenzie Corporation	PARK IN HANDICAP PARKING
14-0927J11	ANDERSON, BARBARA ANN	PARK IN HANDICAP PARKING
14-0928J11	Williams, Carl	PARK IN HANDICAP PARKING

14-0929J11	Siddiqui, Mohammad A	PARK IN HANDICAP PARKING
14-0930J11	BYNUM, JAMES	PARK IN HANDICAP PARKING
14-0931J11	Estros, Rebecca Louise	PARK IN HANDICAP PARKING
14-0934J11	HAWTHORN, RONALD E	PARK IN HANDICAP PARKING
14-0935J11	COOPER, WILLIAM L	PARK IN HANDICAP PARKING
14-0936J11	KAISER, KARL	PARK IN HANDICAP PARKING
14-0937J11	Leal, Adelfa	PARK IN HANDICAP PARKING
14-0938J11	Kinsey, Colen Michael	PARK IN HANDICAP PARKING
15-0001J11	TWADDLE, MARK	PARK IN HANDICAP PARKING
15-0002J11	WOVERTON, BYRON A	PARK IN HANDICAP PARKING
15-0003J11	NACK, MICHAEL	PARK IN HANDICAP PARKING
15-0004J11	GILLIE, TIFFANY NICOLE	PARK IN HANDICAP PARKING
15-0006J11	GREGSTON, HARVEY CHARLES	PARK IN HANDICAP PARKING
15-0016J11	FLETCHER, ERNESTINE K	PARK IN HANDICAP PARKING
15-0017J11	Wilder, Rodger DALE	PARK IN HANDICAP PARKING
15-0018J11	CORTEZ, PEDRO GARZA, II	PARK IN HANDICAP PARKING
15-0019J11	Gee, James	PARK IN HANDICAP PARKING
15-0020J11	ELLIOTT, MICHAEL DAVID	PARK IN HANDICAP PARKING
15-0027J11	DENNY, SANDRA WILLIAMS	PARK IN HANDICAP PARKING
15-0028J11	PETERSON, RHONDA	PARK IN HANDICAP PARKING
15-0029J11	ALLEN, MARK	PARK IN HANDICAP PARKING
15-0046J11	BARRERA, ELOY	PARK IN HANDICAP PARKING
15-0047J11	DRAKE, MARY	PARK IN HANDICAP PARKING
15-0048J11	RUSS, SHEJUANA	PARK IN HANDICAP PARKING
15-0049J11	Thompson, Paul, Sr.	PARK IN HANDICAP PARKING
15-0051J11	Garcia, Alfred Olibares	PARK IN HANDICAP PARKING
15-0054J11	HIGGINS, KEVIN RHYS	PARK IN HANDICAP PARKING
15-0055J11	MALOY, TAMMY	PARK IN HANDICAP PARKING
15-0056J11	VILLANUEVA, DARREN	PARK IN HANDICAP PARKING
15-0057J11	ZINN, JANICE M	PARK IN HANDICAP PARKING
15-0058J11	Mouldon, Thomas	PARK IN HANDICAP PARKING

15-0059J11	GREENWOOD, ANNIE	PARK IN HANDICAP PARKING
15-0060J11	MISENHIMER, DALLAS	PARK IN HANDICAP PARKING
15-0061J11	Ellison, Nathan Ray	PARK IN HANDICAP PARKING
15-0064J11	HERNANDEZ, PABLO S	PARK IN HANDICAP PARKING
15-0065J11	McCullough, Herschel P	PARK IN HANDICAP PARKING
15-0066J11	Cox, Henry	PARK IN HANDICAP PARKING
15-0067J11	FOWLER, GARY R	PARK IN HANDICAP PARKING
15-0068J11	COVERT DAEWOO NORTH	PARK IN HANDICAP PARKING
15-0090J11	PORTER, CHARLES W	PARK IN HANDICAP PARKING
15-0091J11	A-ZERO LLC	PARK IN HANDICAP PARKING
15-0094J11	HARRELL, FRANCES	PARK IN HANDICAP PARKING
15-0095J11	LANDMOND, O RANDALL	PARK IN HANDICAP PARKING
15-0100J11	JAMES, MAJOR, Jr.	PARK IN HANDICAP PARKING
15-0101J11	RENTAL CAR FINANCE CORP	PARK IN HANDICAP PARKING
15-0102J11	Mickown, John James	PARK IN HANDICAP PARKING
15-0103J11	VALADEZ, MARTHA	PARK IN HANDICAP PARKING
15-0104J11	WHITE, ANDREA	PARK IN HANDICAP PARKING
15-0105J11	ISENBERGER, ROBERT M	PARK IN HANDICAP PARKING
15-0143J11	MCMAHON, JACK A	PARK IN HANDICAP PARKING
15-0145J11	Crayton, Diane B	PARK IN HANDICAP PARKING
15-0146J11	BROWN, BARBARA J	PARK IN HANDICAP PARKING
15-0147J11	WHITE, ANDREA	PARK IN HANDICAP PARKING
15-0177J11	Sepulveda, Rene C	PARK IN HANDICAP PARKING
15-0178J11	MORALEZ, LINDA	PARK IN HANDICAP PARKING
15-0179J11	Torres, Lorinda Rodriguez	PARK IN HANDICAP PARKING
15-0181J11	ADAMS, RALPH A	PARK IN HANDICAP PARKING
15-0188J11	ASHWOOD, WOODROW	PARK IN HANDICAP PARKING
15-0189J11	PAINE, JACK W	PARK IN HANDICAP PARKING
15-0190J11	Imken, Alvin Charles	PARK IN HANDICAP PARKING
15-0201J11	SEIFERT, NANCY LEE	PARK IN HANDICAP PARKING
15-0202J11	ANDERSON, ERNEST FRED	PARK IN HANDICAP PARKING

15-0214J11	GONZALES, MANUEL	PARK IN HANDICAP PARKING
15-0215J11	ROHLACK, KRIS JOHN	PARK IN HANDICAP PARKING
15-0216J11	CLEMONS, DERRICK	PARK IN HANDICAP PARKING
15-0217J11	PAULEY, GEORGE D	PARK IN HANDICAP PARKING
15-0234J11	Villescaz, Mary Polanco	PARK IN HANDICAP PARKING
15-0235J11	SONTAG, CHARLOTTE J	PARK IN HANDICAP PARKING
15-0240J11	LANE, MICHAEL	PARK IN HANDICAP PARKING
15-0241J11	MALDONADO, CAHTHLIN	PARK IN HANDICAP PARKING
15-0242J11	COOK, CAROLINE AURA	PARK IN HANDICAP PARKING
15-0253J11	HEMSELL, PATRICIA GAYLE	PARK IN HANDICAP PARKING
15-0254J11	DOCKALL, WALLACE D	PARK IN HANDICAP PARKING
15-0256J11	RICKS, CLAUDE	PARK IN HANDICAP PARKING
15-0258J11	STEFANOWICZ, RANDY LEE	PARK IN HANDICAP PARKING
15-0261J11	McIlvaine, Deborah	PARK IN HANDICAP PARKING
15-0262J11	LYNCH, JAY A	PARK IN HANDICAP PARKING
15-0263J11	Luna, Jose Lugo	PARK IN HANDICAP PARKING
15-0265J11	HILL, JAMES CRAIG	PARK IN HANDICAP PARKING
15-0267J11	SHELTON, WILLIAM R	PARK IN HANDICAP PARKING
15-0270J11	HEATH, JANE A L	PARK IN HANDICAP PARKING
15-0290J11	ANDERSON, ASHLEY	PARK IN HANDICAP PARKING
15-0292J11	Hammarth, Raymond	PARK IN HANDICAP PARKING
15-0293J11	DAVID, SANDRA	PARK IN HANDICAP PARKING
15-0294J11	HAND, LARRY WILLIAM	PARK IN HANDICAP PARKING
15-0296J11	HICKS, MARY ANN	PARK IN HANDICAP PARKING
15-0297J11	MORING, GRIFFIN ALEXANER	PARK IN HANDICAP PARKING
15-0298J11	VILLALOBOS, DORA L	PARK IN HANDICAP PARKING
15-0299J11	CASTANEDA, MIGUEL	PARK IN HANDICAP PARKING
15-0300J11	GARZA, DIANE S	PARK IN HANDICAP PARKING
15-0301J11	LONGORIA, JOANN	PARK IN HANDICAP PARKING
15-0302J11	Evans-Peirce, Alicia C	PARK IN HANDICAP PARKING
15-0304J11	WILLIAMS, BOB ROY	PARK IN HANDICAP PARKING

15-0305J11	HARLAN, LISA	PARK IN HANDICAP PARKING
15-0306J11	GARRETT, JEREMY	PARK IN HANDICAP PARKING
15-0307J11	Lerma, Andy	PARK IN HANDICAP PARKING
15-0308J11	ORTIZ, ELIZABETH REYES	PARK IN HANDICAP PARKING
15-0311J11	STRAUS, CALEB	PARK IN HANDICAP PARKING
15-0312J11	Davison, Dee Anne	PARK IN HANDICAP PARKING
15-0332J11	WYRWICH, ARLO N E	PARK IN HANDICAP PARKING
15-0333J11	FLOURNOY, JR	PARK IN HANDICAP PARKING
15-0334J11	EAN HOLDINGS	PARK IN HANDICAP PARKING
15-0335J11	ROBBINS, BROOKIE N	PARK IN HANDICAP PARKING
15-0336J11	HERTZ VEHICLES LLC	PARK IN HANDICAP PARKING
15-0337J11	FLORES, LUPE	PARK IN HANDICAP PARKING
15-0338J11	Teske, Chelsea Marie	PARK IN HANDICAP PARKING
15-0339J11	RODRIGUEZ, LUCIA TRISTAN	PARK IN HANDICAP PARKING
15-0340J11	STEPHENS, DANNY R	PARK IN HANDICAP PARKING
15-0341J11	PESINA, MARIANA	PARK IN HANDICAP PARKING
15-0342J11	Contreras, Elena Carrillo	PARK IN HANDICAP PARKING
15-0343J11	Boggus, Kenneth	PARK IN HANDICAP PARKING
15-0344J11	FLANAGAN, CLINTON M	PARK IN HANDICAP PARKING
15-0345J11	TORRES, NICOLE ROSARIO	PARK IN HANDICAP PARKING
15-0346J11	Patel, Harshad	PARK IN HANDICAP PARKING
15-0359J11	SARTIN, LARRY	PARK IN HANDICAP PARKING
15-0360J11	COX, KAITLYN	PARK IN HANDICAP PARKING
15-0361J11	CLEGG, MICHELLE	PARK IN HANDICAP PARKING
15-0362J11	HERTZ VEHICLES LLC	PARK IN HANDICAP PARKING
15-0363J11	MEEDER EQUIPMENT CO	PARK IN HANDICAP PARKING
15-0364J11	CAPSARIS, KELLY H	PARK IN HANDICAP PARKING
15-0370J11	SUAZO, JOHANI	PARK IN HANDICAP PARKING
15-0371J11	WASHINGTON, EUGENE	PARK IN HANDICAP PARKING
15-0372J11	PRADO, RUBEN VICTORIO, Jr.	PARK IN HANDICAP PARKING
15-0373J11	AREVALO, DEEDRA	PARK IN HANDICAP PARKING

15-0374J11	SUNIGA, MARK A	PARK IN HANDICAP PARKING
15-0376J11	CAMPOS, JOSE ENRIQUE	PARK IN HANDICAP PARKING
15-0377J11	SILCOCKS, MARLENE R	PARK IN HANDICAP PARKING
15-0378J11	WILLIAMS, CHARLES P	PARK IN HANDICAP PARKING
15-0379J11	Gottschalk, Donald Everett	PARK IN HANDICAP PARKING
15-0380J11	ASAMOA, EDWRAD	PARK IN HANDICAP PARKING
15-0381J11	PATTON, BETTYE	PARK IN HANDICAP PARKING
15-0414J11	WEBSTER, CHESTER ALLEN	PARK IN HANDICAP PARKING
15-0415J11	WALKER, JAMES	PARK IN HANDICAP PARKING
15-0416J11	CARRANZA, CAMILO G	PARK IN HANDICAP PARKING
15-0417J11	SCHMIDT, MICHAELA MAURINE	PARK IN HANDICAP PARKING
15-0418J11	DEES, HOLLY	PARK IN HANDICAP PARKING
15-0419J11	TREVINO, ERIC	PARK IN HANDICAP PARKING
15-0420J11	KLEPPER, NATALIE FERNE	PARK IN HANDICAP PARKING
15-0421J11	JAMES, GEORGE	PARK IN HANDICAP PARKING
15-0422J11	MCDONALD, JERRY MAX	PARK IN HANDICAP PARKING
15-0424J11	GUNN, EMMANUEL ANTONIO	PARK IN HANDICAP PARKING
15-0513J11	Deily, Ruth Dwight	PARK IN HANDICAP PARKING
15-0515J11	Buesing, Lana Knap	PARK IN HANDICAP PARKING
15-0517J11	Gould, George Kenneth	PARK IN HANDICAP PARKING
15-0518J11	CARTER, ROBERT CHARLES, III	PARK IN HANDICAP PARKING
15-0519J11	GOBLE, ROGER CHASE	PARK IN HANDICAP PARKING
15-0522J11	Huber, Kayla Janice	PARK IN HANDICAP PARKING
15-0533J11	LONGHORN BUDA HOTEL	PARK IN HANDICAP PARKING
15-0536J11	Hernandez, Maximiliano Franci	PARK IN HANDICAP PARKING
15-0537J11	Thompson, Paul	PARK IN HANDICAP PARKING
15-0539J11	BRADLEY, RACHAEL EDEN	PARK IN HANDICAP PARKING
15-0600J11	MERCADO, AURELIANO	PARK IN HANDICAP PARKING
15-0601J11	FLING, SHEILA	PARK IN HANDICAP PARKING
15-0604J11	Patterson, Lacey Nicole	PARK IN HANDICAP PARKING
15-0660J11	Knox, Jeremy Reynard	PARK IN HANDICAP PARKING

15-0663J11	BOWMAN, SHELIA J	PARK IN HANDICAP PARKING
15-0664J11	ESPINOSA, AUGUSTINE	PARK IN HANDICAP PARKING
15-0666J11	CAMP, JIMMY LEE	PARK IN HANDICAP PARKING
15-0667J11	LISKA, TIM	PARK IN HANDICAP PARKING
15-0668J11	POLANCO, ELISA	PARK IN HANDICAP PARKING
15-0729J11	Hernandez, Francisco	PARK IN HANDICAP PARKING
15-0732J11	DAVIS, ELLIOT S	PARK IN HANDICAP PARKING
15-0733J11	WINN, STEVE	PARK IN HANDICAP PARKING
15-0734J11	LUERA, DORA C	PARK IN HANDICAP PARKING
15-0735J11	CRAWFORD, ERIC ROBERT	PARK IN HANDICAP PARKING
15-0736J11	ADAMS, MARY	PARK IN HANDICAP PARKING
15-0737J11	LAHAYE, THOMAS FRANKLIN	PARK IN HANDICAP PARKING
15-0738J11	Trevino, Jose Angel	PARK IN HANDICAP PARKING
15-0795J11	BROWN, HUGH	PARK IN HANDICAP PARKING
15-0796J11	HULL, CATHY	PARK IN HANDICAP PARKING
15-0797J11	JDS & BCDS REVO TRUST	PARK IN HANDICAP PARKING
15-0798J11	READ, HARRISON GORDON	PARK IN HANDICAP PARKING
15-0799J11	SCHMEISSER, MIKE	PARK IN HANDICAP PARKING
15-0800J11	RAFFERTY, JAMES	PARK IN HANDICAP PARKING
15-0881J11	Williams, Phillip	PARK IN HANDICAP PARKING
15-0884J11	BURKHART, VIRGIL	PARK IN HANDICAP PARKING
15-0886J11	HONRUD, BRITTANY RAE	PARK IN HANDICAP PARKING
15-0887J11	TAYLOR, AARON GLENN	PARK IN HANDICAP PARKING
15-0888J11	WEST, DEBRA	PARK IN HANDICAP PARKING
15-0889J11	Perez, Amanda Danielle	PARK IN HANDICAP PARKING
15-0971J11	Falcon, Margaret	PARK IN HANDICAP PARKING
15-0972J11	Juarez, Ruben Mendoza	PARK IN HANDICAP PARKING
15-0973J11	ATKINSON, JENNIFER D	PARK IN HANDICAP PARKING
15-0974J11	Harris, Katherine Elizabeth	PARK IN HANDICAP PARKING
15-0975J11	NELSON, STEVEN E	PARK IN HANDICAP PARKING
15-1049J11	GORNEY, WILLIAM J	PARK IN HANDICAP PARKING

15-1050J11	Arredondo, Frank T	PARK IN HANDICAP PARKING
15-1053J11	WISENBAKER, GREGORY SCOTT	PARK IN HANDICAP PARKING
15-1054J11	AGUIRRE, RODRIGO	PARK IN HANDICAP PARKING
15-1056J11	MAJDALANI, C CHARLES	PARK IN HANDICAP PARKING
15-1105J11	WALL, J C	PARK IN HANDICAP PARKING
15-1107J11	Botello, Esmeralda	PARK IN HANDICAP PARKING
15-1109J11	ZBORAL, CORNELIA RISSMANN	PARK IN HANDICAP PARKING
15-1110J11	CAMPBELL-MARTIN, DEBRA ANN	PARK IN HANDICAP PARKING
15-1112J11	OCASIO, MARIA	PARK IN HANDICAP PARKING
15-1113J11	SANDERS, JOSHUA MICHAEL	PARK IN HANDICAP PARKING
15-1114J11	DUCOTE, STEPHEN JAY	PARK IN HANDICAP PARKING
15-1115J11	ISENBERGER, ROBERT M, III	PARK IN HANDICAP PARKING
15-1117J11	Wiley, Erica Marie	PARK IN HANDICAP PARKING
15-1119J11	RIVAS, FEDERICO	PARK IN HANDICAP PARKING
15-1126J11	PRINCE, JOYCE	PARK IN HANDICAP PARKING
15-1127J11	SOTELO, CARMEN	PARK IN HANDICAP PARKING
15-1128J11	MASTERSON, BARBARA JEAN	PARK IN HANDICAP PARKING
15-1129J11	Apperson, Johanna H	PARK IN HANDICAP PARKING
15-1130J11	STEWART, BERTIS B	PARK IN HANDICAP PARKING
15-1217J11	JENNINGS, CHARLES	PARK IN HANDICAP PARKING
15-1218J11	DAVILA, MARTHA	PARK IN HANDICAP PARKING
15-1220J11	BLACK, GERALD	PARK IN HANDICAP PARKING
15-1221J11	Bostwick, Joe E.	PARK IN HANDICAP PARKING
15-1222J11	Rabie, Jiries David	PARK IN HANDICAP PARKING
15-1223J11	JONES, RICK E	PARK IN HANDICAP PARKING
15-1224J11	Hearne, Dianne Anderson	PARK IN HANDICAP PARKING
15-1251J11	Gonzales, Maria Luisa	PARK IN HANDICAP PARKING
15-1252J11	WEBSTER, CAROL	PARK IN HANDICAP PARKING
15-1254J11	SSC SERVICE SOLUTIONS	PARK IN HANDICAP PARKING
15-1256J11	ROBERSON, CYNTHIA	PARK IN HANDICAP PARKING
15-1257J11	MOUW, JOSHUA CRAIG	PARK IN HANDICAP PARKING

15-1259J11	ESKEW, BIRDIE	PARK IN HANDICAP PARKING
15-1264J11	VILLEGAS, DAWN GABRIELLA	PARK IN HANDICAP PARKING
15-1373J11	FREEMAN, MINDY	PARK IN HANDICAP PARKING
15-1400J11	Deans Shop	PARK IN HANDICAP PARKING
15-1402J11	Falluer, David Michael	PARK IN HANDICAP PARKING
15-1404J11	GUERRERO, ERNEST	PARK IN HANDICAP PARKING
15-1405J11	VILLALOBOS, MARK	PARK IN HANDICAP PARKING
15-1406J11	Verhaalen, Danial James	PARK IN HANDICAP PARKING
15-1407J11	Bechtol, Mildred A	PARK IN HANDICAP PARKING
15-1408J11	THOMPSON, KIMBERLY EVETTE	PARK IN HANDICAP PARKING
15-1411J11	Gonzales, Clavio S,	PARK IN HANDICAP PARKING
15-1412J11	Romo, John	PARK IN HANDICAP PARKING
15-1413J11	NGUYEN, NINH THI	PARK IN HANDICAP PARKING
15-1414J11	RODRIGUEZ, CELIA	PARK IN HANDICAP PARKING
15-1416J11	DUKE, CYNTHIA	PARK IN HANDICAP PARKING
15-1474J11	WILLEY, ASHTON TAYLORE	PARK IN HANDICAP PARKING
15-1475J11	Boyt, Jefferson E.	PARK IN HANDICAP PARKING
15-1476J11	BAKER, CODY BRETT	PARK IN HANDICAP PARKING
15-1477J11	Wood, Wanda	PARK IN HANDICAP PARKING
15-1478J11	HARRIS, PATRICIA A	PARK IN HANDICAP PARKING
15-1479J11	CUMMINGS, DONALD CLARK	PARK IN HANDICAP PARKING
15-1480J11	Arredondo, Frank T	PARK IN HANDICAP PARKING
15-1566J11	NADAL, CARMEN LIZA MALAVE	PARK IN HANDICAP PARKING
15-1567J11	Holley, Charles	PARK IN HANDICAP PARKING
15-1568J11	GONZALES, FREDERICO	PARK IN HANDICAP PARKING
15-1569J11	ELLIOTT, MARTHA CAGLE	PARK IN HANDICAP PARKING
15-1571J11	LANDEROS, MARTHA E	PARK IN HANDICAP PARKING
15-1854J11	BONILLA, SALVADOR, Jr.	PARK IN HANDICAP PARKING
15-1857J11	STULL, MICHAEL D	PARK IN HANDICAP PARKING
15-1902J11	Burns, Jon K	PARK IN HANDICAP PARKING
15-1904J11	MALDONADO, KAYLA	PARK IN HANDICAP PARKING

15-1905J11	VILLARREAL, ADELA	PARK IN HANDICAP PARKING
15-1906J11	FISHER, GREGORY	PARK IN HANDICAP PARKING
15-1909J11	LOCKLEAR, SHARRON	PARK IN HANDICAP PARKING
15-1911J11	TREVINO, JERRY F	PARK IN HANDICAP PARKING
15-1914J11	D. L. PETERSON TRUST	PARK IN HANDICAP PARKING
15-1939J11	COOK, CLINTON	PARK IN HANDICAP PARKING
15-1941J11	JONES, CLIFTON PATRICK	PARK IN HANDICAP PARKING
15-1943J11	Patel, Mahendra	PARK IN HANDICAP PARKING
15-1944J11	WENDENBURG, SUE	PARK IN HANDICAP PARKING
15-1945J11	ROGERS, THEODORE	PARK IN HANDICAP PARKING
15-1947J11	RAMIREZ, RICARDO C	PARK IN HANDICAP PARKING
15-1948J11	WENDEL, JEAN M	PARK IN HANDICAP PARKING
15-1949J11	SKANNAL, JOHN B	PARK IN HANDICAP PARKING
15-1950J11	MARTINEZ, JOANN P	PARK IN HANDICAP PARKING
15-1968J11	MELE, DENISE MARIE	PARK IN HANDICAP PARKING
15-1969J11	FARIYIKE, IBUKUNOLUWA	PARK IN HANDICAP PARKING
15-1970J11	WHITE, PAUL D	PARK IN HANDICAP PARKING
15-1971J11	BRAMAN, MARY GAYLE	PARK IN HANDICAP PARKING
15-1974J11	URDIALES, JUAN	PARK IN HANDICAP PARKING
15-1975J11	KANG, JUNGJIN	PARK IN HANDICAP PARKING
15-1979J11	GARCIA, CHRISTOBAL	PARK IN HANDICAP PARKING
15-1981J11	SINGLETERRY, DERICK ROCKY	PARK IN HANDICAP PARKING
15-2002J11	GONZALEZ, CHRISTIAN FELIX	PARK IN HANDICAP PARKING
15-2005J11	LANDEROS, MELVA DAVILA	PARK IN HANDICAP PARKING
15-2007J11	Benites, Robert	PARK IN HANDICAP PARKING
15-2008J11	RICHTER, DOUGLAS CAMERON	PARK IN HANDICAP PARKING
15-2009J11	MACCOW, MAGNUS ALBERTUS	PARK IN HANDICAP PARKING
15-2010J11	GIBSON, ROBERT D	PARK IN HANDICAP PARKING
15-2029J11	ELLIOTT, JOYCE MARIE	PARK IN HANDICAP PARKING
15-2051J11	Bazan, Esteban	PARK IN HANDICAP PARKING
15-2052J11	ROMO, MARINA	PARK IN HANDICAP PARKING

15-2053J11	DELGADO, RAFAEL	PARK IN HANDICAP PARKING
15-2054J11	GARCIA, ROSANNA	PARK IN HANDICAP PARKING
15-2055J11	SCHNEIDER, VEDA K	PARK IN HANDICAP PARKING
15-2076J11	ARRANA, SAMUEL	PARK IN HANDICAP PARKING
15-2080J11	PEREZ, ROBERTO QUINTANILLA	PARK IN HANDICAP PARKING
15-2083J11	WEST, CANDALL	PARK IN HANDICAP PARKING
15-2084J11	DRAY, NICHOLAS ROGER	PARK IN HANDICAP PARKING
15-2089J11	CASTILLO, SABAS	PARK IN HANDICAP PARKING
15-2098J11	BRIONES, JOE F	PARK IN HANDICAP PARKING
15-2099J11	TRANSCO LIVERY SERVICES INC	PARK IN HANDICAP PARKING
15-2100J11	VERA-CASTRO, ESTELLA MARIE	PARK IN HANDICAP PARKING
15-2101J11	POLT, EDWIN ALOYSIUS	PARK IN HANDICAP PARKING
15-2106J11	BATAILLON, BETH M	PARK IN HANDICAP PARKING
15-2107J11	Willis, Liza	PARK IN HANDICAP PARKING
15-2129J11	GUEL, YOLANDA L.	PARK IN HANDICAP PARKING
15-2130J11	VARGAS, LETICIA ROCHA	PARK IN HANDICAP PARKING
15-2131J11	HESS, TODD D	PARK IN HANDICAP PARKING
15-2134J11	ARRENDONDO, RUPERTO	PARK IN HANDICAP PARKING
15-2135J11	PV HOLDING CORP	PARK IN HANDICAP PARKING
15-2138J11	WYDERMYER, JANEA CARRIANA	PARK IN HANDICAP PARKING
15-2175J11	CEDILLO, CRUZ M	PARK IN HANDICAP PARKING
15-2177J11	PETERS, JERRY WILLIAM	PARK IN HANDICAP PARKING
15-2178J11	Harding, Genest	PARK IN HANDICAP PARKING
15-2180J11	Armstrong, Jane Ann	PARK IN HANDICAP PARKING
15-2222J11	ANCIRA, SANTIAGO	PARK IN HANDICAP PARKING
15-2223J11	RODRIGUEZ, LILIANA GUADALUPE	PARK IN HANDICAP PARKING
15-2224J11	GARCIA, DEANN DRA	PARK IN HANDICAP PARKING
15-2225J11	CAVAZOS, RUBEN J	PARK IN HANDICAP PARKING
15-2226J11	Luckey, Charles D	PARK IN HANDICAP PARKING
15-2227J11	JUNEAU, HOLLY	PARK IN HANDICAP PARKING
15-2228J11	MCILVAINE, BARBARA C	PARK IN HANDICAP PARKING

15-2229J11	WISWELL, ANN	PARK IN HANDICAP PARKING
15-2230J11	SPRINGER, JEANETTE	PARK IN HANDICAP PARKING
15-2231J11	LAI TRUST	PARK IN HANDICAP PARKING
15-2232J11	SWEENEY, JAMES W	PARK IN HANDICAP PARKING
15-2233J11	CUNDIFF, GLENDA MARGURITE	PARK IN HANDICAP PARKING
15-2234J11	YOUNGBLOOD, KIMBERLY MAE	PARK IN HANDICAP PARKING
15-2235J11	BOONE, SHANA MARTHANN	PARK IN HANDICAP PARKING
15-2237J11	PV HOLDING CORP	PARK IN HANDICAP PARKING
15-2238J11	SANDOVAL, JOHN, Jr.	PARK IN HANDICAP PARKING
15-2240J11	MARTINEZ, BENITO, Jr.	PARK IN HANDICAP PARKING
15-2281J11	DONLEN TRUST	PARK IN HANDICAP PARKING
15-2282J11	GRAHAM, PEGGY J	PARK IN HANDICAP PARKING
15-2283J11	COQUAT, JUSTIN ALLEN	PARK IN HANDICAP PARKING
15-2299J11	BLYDENBURGH, RAYMOND G, II	PARK IN HANDICAP PARKING
15-2302J11	NISSAN-INFINITI LT	PARK IN HANDICAP PARKING
15-2303J11	PARRISH, CHARLES	PARK IN HANDICAP PARKING
15-2329J11	EAN HOLDINGS LLC	PARK IN HANDICAP PARKING
15-2335J11	Fridel, Louis Francis	PARK IN HANDICAP PARKING
15-2338J11	HERTZ VEHICLES LLC	PARK IN HANDICAP PARKING
15-2339J11	Morrow, Thomas Anthony	PARK IN HANDICAP PARKING
15-2475J11	MILNER, NATALIE LANE	PARK IN HANDICAP PARKING
15-2476J11	RIOS, MARY LOYA	PARK IN HANDICAP PARKING
15-2477J11	Okafor, Ken	PARK IN HANDICAP PARKING
15-2478J11	AYCOX, KENNETH CALVIN	PARK IN HANDICAP PARKING
15-2479J11	GAY, RAY H	PARK IN HANDICAP PARKING
15-2480J11	HUMADA, DAISY WILBURN	PARK IN HANDICAP PARKING
15-2481J11	ANTOMAS, YVONNE MARIE	PARK IN HANDICAP PARKING
15-2482J11	ARIZPE, ANTONIO M	PARK IN HANDICAP PARKING
15-2483J11	SLOOP, PHILLIP ANTHONY	PARK IN HANDICAP PARKING
15-2484J11	KRAL, GARY LEE	PARK IN HANDICAP PARKING
15-2552J11	SETTLES, SHELLY RENEE	PARK IN HANDICAP PARKING

15-2555J11	Alvarez, Sylvia Suarez	PARK IN HANDICAP PARKING
15-2557J11	ESPARZA, ABEL	PARK IN HANDICAP PARKING
15-2618J11	STUCKY, GLEN H	PARK IN HANDICAP PARKING
15-2619J11	MONTOYA, JOSE G BAUTISTA	PARK IN HANDICAP PARKING
15-2620J11	HIRANI, NOORUDDIN	PARK IN HANDICAP PARKING
15-2621J11	CRYE, KATHY	PARK IN HANDICAP PARKING
15-2624J11	GREGSTON, HARVEY CHARLES	PARK IN HANDICAP PARKING
15-2625J11	POPE, DONALD	PARK IN HANDICAP PARKING
15-2626J11	ALONZO, CHRISTOPHER DALE	PARK IN HANDICAP PARKING
15-2628J11	ENERTECH RESOURCES LLC	PARK IN HANDICAP PARKING
15-2630J11	MADRIGAL, VALENTINA	PARK IN HANDICAP PARKING
15-2631J11	CONWAY, WENDI	PARK IN HANDICAP PARKING
15-2644J11	Delgado, Peggy	PARK IN HANDICAP PARKING
15-2650J11	Timmermann, Linda J	PARK IN HANDICAP PARKING
15-2651J11	Rizk, Dora	PARK IN HANDICAP PARKING
15-2696J11	CONAWAY, DEREK E	PARK IN HANDICAP PARKING
15-2737J11	AGORO, USUF	PARK IN HANDICAP PARKING
16-0021J11	SELGADO, VICTORIA	PARK IN HANDICAP PARKING
16-0155J11	LUEDTKE, AARON	PARK IN HANDICAP PARKING
16-0156J11	Rivera, Mary	PARK IN HANDICAP PARKING
16-0158J11	KING, RACHCEDA DONEILL	PARK IN HANDICAP PARKING
16-0159J11	Gulekson, Alice	PARK IN HANDICAP PARKING
16-0160J11	HISAW, TOMMY L	PARK IN HANDICAP PARKING
16-0161J11	RAMIREZ, JESSE F	PARK IN HANDICAP PARKING
16-0162J11	Quintero, Robert Natal	PARK IN HANDICAP PARKING
16-0163J11	HURST, ABBY	PARK IN HANDICAP PARKING
16-0164J11	BALL, KENNETH KELLY	PARK IN HANDICAP PARKING
16-0165J11	MOORE, DANA KAROL	PARK IN HANDICAP PARKING
16-0168J11	LARA, ALEX	PARK IN HANDICAP PARKING
16-0169J11	MCCOWN, B	PARK IN HANDICAP PARKING
16-0173J11	RIEL, BOBBIJO LEANN	PARK IN HANDICAP PARKING

16-0180J11	DE SANDOVAL, DELIA MENDEZ	PARK IN HANDICAP PARKING
16-0181J11	Farris, Richard Dwayne	PARK IN HANDICAP PARKING
16-0182J11	Rodriguez, Dora Cruz	PARK IN HANDICAP PARKING
16-0183J11	ALEMAN, OLIVIA DELGADO	PARK IN HANDICAP PARKING
16-0184J11	Williams, Charles Allan	PARK IN HANDICAP PARKING
16-0185J11	Aulds, Harold David	PARK IN HANDICAP PARKING
16-0186J11	GARCIA, ROBERT G	PARK IN HANDICAP PARKING
16-0187J11	PORCH, JANICE WILCOX	PARK IN HANDICAP PARKING
16-0188J11	Reeves, James Franklin	PARK IN HANDICAP PARKING
16-0191J11	DRAPER, CRYSTAL GALE	PARK IN HANDICAP PARKING
16-0192J11	Handsel, Linda	PARK IN HANDICAP PARKING
16-0193J11	PEARSON, JUDITH J	PARK IN HANDICAP PARKING
16-0194J11	ONEILL, ROBERT	PARK IN HANDICAP PARKING
16-0225J11	LOPEZ, JUAN	PARK IN HANDICAP PARKING
16-0229J11	CASTRO, THOMAS	PARK IN HANDICAP PARKING
16-0230J11	CHAVEZ, GABRIEL	PARK IN HANDICAP PARKING
16-0231J11	MONTES, RENE, Jr.	PARK IN HANDICAP PARKING
16-0232J11	Hitchcock, Harold Woods	PARK IN HANDICAP PARKING
16-0233J11	MARTINEZ, MARIA B	PARK IN HANDICAP PARKING
16-0234J11	RICHE, ROBERT JAMES, Jr.	PARK IN HANDICAP PARKING
16-0235J11	AQUINO, MONICA MORSE	PARK IN HANDICAP PARKING
16-0238J11	SALAZAR, TASHA L	PARK IN HANDICAP PARKING
16-0240J11	PRICE, DONNA M	PARK IN HANDICAP PARKING
16-0243J11	Ashworth, Jermaine	PARK IN HANDICAP PARKING
16-0244J11	Alvarado, Mary Catherine	PARK IN HANDICAP PARKING
16-0245J11	TAMAYO, PETER	PARK IN HANDICAP PARKING
16-0246J11	Barr, Tracy Taft	PARK IN HANDICAP PARKING
16-0248J11	BRODERICK, PAMELA	PARK IN HANDICAP PARKING
16-0249J11	HORNE, HOMER OWEN	PARK IN HANDICAP PARKING
16-0251J11	SPORTSMAN, MARY ELLEN	PARK IN HANDICAP PARKING
16-0257J11	McCollum, Ben	PARK IN HANDICAP PARKING

16-0260J11	KOSEL, MARLYS E	PARK IN HANDICAP PARKING
16-0296J11	DIAZ, AYMOND	PARK IN HANDICAP PARKING
16-0299J11	Iammarino, Timothy Edgar	PARK IN HANDICAP PARKING
16-0302J11	BARNARD, JORDAN LYNNE	PARK IN HANDICAP PARKING
16-0309J11	Contreras, James Arthur	PARK IN HANDICAP PARKING
16-0314J11	DELACERDA, MARIA RAMIREZ	PARK IN HANDICAP PARKING
16-0327J11	Good, David	PARK IN HANDICAP PARKING
16-0360J11	WILLIAMS, SHERI	PARK IN HANDICAP PARKING
16-0370J11	WEEMS, DINAH A	PARK IN HANDICAP PARKING
16-0372J11	PATTERSON, NANCY KATHLEEN	PARK IN HANDICAP PARKING
16-0379J11	HIGGINS, JEAN F	PARK IN HANDICAP PARKING
16-0380J11	CASTRO, JACKIE	PARK IN HANDICAP PARKING
16-0385J11	VILLEGAS, MIGUEL	PARK IN HANDICAP PARKING
16-0405J11	SPRINGER, GINGER ANN	PARK IN HANDICAP PARKING
16-0425J11	RODRIGUEZ, JOSE	PARK IN HANDICAP PARKING
16-0450J11	SASSMAN, HAROLD GENE	PARK IN HANDICAP PARKING
16-0464J11	MCDONALD, PEGGYE	PARK IN HANDICAP PARKING
16-0465J11	CHAPA, CHRISTINA M	PARK IN HANDICAP PARKING
16-0467J11	CAUDILLO, PAUL	PARK IN HANDICAP PARKING
16-0468J11	Abrego, Felipe Hernandez	PARK IN HANDICAP PARKING
16-0471J11	SANDOVAL, ANGEL DE JESUS	PARK IN HANDICAP PARKING
16-0475J11	TURNER, WILLIAM	PARK IN HANDICAP PARKING
16-0509J11	Turner, Glenn Gaylord	PARK IN HANDICAP PARKING
16-0510J11	Munson, Karen Lyle	PARK IN HANDICAP PARKING
16-0511J11	HUNT AND HUNT LTD	PARK IN HANDICAP PARKING
16-0562J11	Coon, Charles M	PARK IN HANDICAP PARKING
16-0585J11	alvarado, pedro	PARK IN HANDICAP PARKING
16-0661J11	Baceroott, Javari Sidney	PARK IN HANDICAP PARKING
16-0682J11	MOORE, LAURA MAE	PARK IN HANDICAP PARKING
16-0684J11	WOODARD, PENNY A	PARK IN HANDICAP PARKING
16-0685J11	COX, JAMES WILLIAM	PARK IN HANDICAP PARKING

16-0687J11	MILLER, TERRI	PARK IN HANDICAP PARKING
16-0690J11	MORALES, NESTOR DAVID PEREZ	PARK IN HANDICAP PARKING
16-0716J11	PINEDA, CYNTHIA KAY	PARK IN HANDICAP PARKING
16-0718J11	VASQUEZ, MANUEL MORIN	PARK IN HANDICAP PARKING
16-0719J11	EAN HOLDINGS	PARK IN HANDICAP PARKING
16-0720J11	BERGMANN, MCKENNA DANIELLE	PARK IN HANDICAP PARKING
16-0721J11	GLENN, JAMES R	PARK IN HANDICAP PARKING
16-0722J11	KINCANNON, DOUGLAS M	PARK IN HANDICAP PARKING
16-0723J11	NAMKEN, BRANDON CLAYTON	PARK IN HANDICAP PARKING
16-0724J11	BOCANEGRA, JOSE GUADALUPE	PARK IN HANDICAP PARKING
16-0726J11	FULLER, DENNIS JOHN, Jr.	PARK IN HANDICAP PARKING
16-0729J11	ODLUM, WILLIAM J	PARK IN HANDICAP PARKING
16-0730J11	BITTNER, KELLY	PARK IN HANDICAP PARKING
16-0731J11	MONTOYA, MELANIE M	PARK IN HANDICAP PARKING
16-0732J11	VINCENT, SHANNON ARTHUR	PARK IN HANDICAP PARKING
16-0733J11	Berry, Bob	PARK IN HANDICAP PARKING
16-0735J11	DEES, JAMES REAGAN	PARK IN HANDICAP PARKING
16-0742J11	BLANKENSHIP, CHARLES E	PARK IN HANDICAP PARKING
16-0761J11	MCDONALD, JAMES JESUS	PARK IN HANDICAP PARKING
16-0771J11	STEPHENS, ALEXANDER EMIR	PARK IN HANDICAP PARKING
16-0772J11	Moseley, Gary Lynn	PARK IN HANDICAP PARKING
16-0785J11	OLIVAREZ, CASIMIRO	PARK IN HANDICAP PARKING
16-0788J11	GOODMAN, THELMA	PARK IN HANDICAP PARKING
16-0789J11	BAKER, TYRONE	PARK IN HANDICAP PARKING
16-0790J11	CAMPBELL, FRANCES	PARK IN HANDICAP PARKING
16-0791J11	KONTNIER, OBERT	PARK IN HANDICAP PARKING
16-0792J11	Olvera, Josie	PARK IN HANDICAP PARKING
16-0793J11	Trevino, Henry, Jr.	PARK IN HANDICAP PARKING
16-0797J11	SANCHEZ, JOUQUIN	PARK IN HANDICAP PARKING
16-0798J11	THIGPEN, ROBERT TYLER	PARK IN HANDICAP PARKING
16-0799J11	PIANO, DENNIS CHARLES	PARK IN HANDICAP PARKING

16-0800J11	COLEMAN, VANESSA	PARK IN HANDICAP PARKING
16-0801J11	Diaz, Miguel	PARK IN HANDICAP PARKING
16-0802J11	EAN HOLDINGS	PARK IN HANDICAP PARKING
16-0804J11	Esquivel, Guillermo Enrique	PARK IN HANDICAP PARKING
16-0805J11	Roman, George	PARK IN HANDICAP PARKING
16-0806J11	PACE, ZACHARY DALTON	PARK IN HANDICAP PARKING
16-0807J11	DUSON, LOUIS EDWARD	PARK IN HANDICAP PARKING
16-0808J11	Patel, Paresh Or Rajesh	PARK IN HANDICAP PARKING
16-0809J11	LALOUETTE, LABAN LEVI	PARK IN HANDICAP PARKING
16-0811J11	POLANCO, NIRA	PARK IN HANDICAP PARKING
16-0834J11	Coburn, Kimberly Michelle	PARK IN HANDICAP PARKING
16-0835J11	DE LA GARZA, WALLY	PARK IN HANDICAP PARKING
16-0863J11	ZEPEDA, ESTHER MARIE	PARK IN HANDICAP PARKING
16-0891J11	GREEN, CHADWICK PAUL	PARK IN HANDICAP PARKING
16-0892J11	GALIS, KOLBY MICHAEL	PARK IN HANDICAP PARKING
16-0893J11	KELLEY, TAMMY LYNN	PARK IN HANDICAP PARKING
16-0894J11	Richardson, Donald Wayne	PARK IN HANDICAP PARKING
16-0896J11	Espinoza, Christopher Jesus	PARK IN HANDICAP PARKING
16-0897J11	RIVERA, JOSE DEJESUS RAMIREZ	PARK IN HANDICAP PARKING
16-0898J11	HATTON, REBECCA ANN	PARK IN HANDICAP PARKING
16-0899J11	OSINSKI, WILLIAM HARLEY	PARK IN HANDICAP PARKING
16-0901J11	HOWLE, LINDA TOLSON	PARK IN HANDICAP PARKING
16-0912J11	MEEK, LORI NICOLE	PARK IN HANDICAP PARKING
16-0913J11	TEEL, TERRI LYNN	PARK IN HANDICAP PARKING
16-0914J11	HENDRICKS, LISA	PARK IN HANDICAP PARKING
16-0915J11	ESSARY, MARK B	PARK IN HANDICAP PARKING
16-0916J11	Contreras, Eloisa R	PARK IN HANDICAP PARKING
16-0917J11	Dieterle, Carolyn J	PARK IN HANDICAP PARKING
16-0919J11	MCCARTY, DAVID ALLAN	PARK IN HANDICAP PARKING
16-0920J11	LIMBRICK, KENNETH LYNN	PARK IN HANDICAP PARKING
16-0921J11	BANUELOS, RAUL RODRIGUEZ	PARK IN HANDICAP PARKING

16-0942J11	Lankford, Elizabeth	PARK IN HANDICAP PARKING
16-0943J11	BUTCHEE, WILLIAM, Jr.	PARK IN HANDICAP PARKING
16-0944J11	CARDENAS, BENJAMIN	PARK IN HANDICAP PARKING
16-1050J11	Scherer, Robert Kurt	PARK IN HANDICAP PARKING
16-1052J11	BARLOW, JANETTE	PARK IN HANDICAP PARKING
16-1053J11	TARVER, DONNA MCDONALD	PARK IN HANDICAP PARKING
16-1055J11	LEE, RICHARD	PARK IN HANDICAP PARKING
16-1057J11	KAHANAK, WILLIAM JOSEPH	PARK IN HANDICAP PARKING
16-1058J11	GANDARIA, RODOLFO, Jr.	PARK IN HANDICAP PARKING
16-1066J11	LOZA, LAURO LEONEL	PARK IN HANDICAP PARKING
16-1067J11	THOMAS, CAROLYN YVETTE	PARK IN HANDICAP PARKING
16-1068J11	BOYLE, CAROL	PARK IN HANDICAP PARKING
16-1070J11	PAYNE, JEROME FRANKLIN	PARK IN HANDICAP PARKING
16-1072J11	HELLAS CONSTRUCTION	PARK IN HANDICAP PARKING
16-1074J11	FLORES, VERONICA YVETTE	PARK IN HANDICAP PARKING
16-1075J11	ARRIAGA, MARIA GUADALUPE	PARK IN HANDICAP PARKING
16-1076J11	ALVAREZ, MARIA	PARK IN HANDICAP PARKING
16-1078J11	ESCOBAR, VICTOR JOAQUIN, IV	PARK IN HANDICAP PARKING
16-1079J11	FLORES, LARRY MICHAEL	PARK IN HANDICAP PARKING
16-1080J11	LOVATO, LORISE	PARK IN HANDICAP PARKING
16-1081J11	SANCHEZ, JAVIER	PARK IN HANDICAP PARKING
16-1082J11	LEBOUEF, RITCHIE J	PARK IN HANDICAP PARKING
16-1083J11	Nelson, Minnie	PARK IN HANDICAP PARKING
16-1084J11	Rivas, Juan Luis	PARK IN HANDICAP PARKING
16-1085J11	DUQUE, LEONARDO ANDRES CASTANO	PARK IN HANDICAP PARKING
16-1086J11	Naylor, Wanda Gail	PARK IN HANDICAP PARKING
16-1087J11	ELLER, DIANNA CALHOUN	PARK IN HANDICAP PARKING
16-1088J11	HUMMEL, KARYL ANN	PARK IN HANDICAP PARKING
16-1157J11	D L PETERSON TRUST	PARK IN HANDICAP PARKING
16-1159J11	CARILLO, ARMANDO	PARK IN HANDICAP PARKING
16-1160J11	PONCE, ARTURO	PARK IN HANDICAP PARKING

16-1161J11	PATLAN, ANSELMO	PARK IN HANDICAP PARKING
16-1162J11	RASHONE, RONALD	PARK IN HANDICAP PARKING
16-1163J11	HERRING, HENRY R, Jr.	PARK IN HANDICAP PARKING
16-1164J11	ROMERO, JIMMY A	PARK IN HANDICAP PARKING
16-1165J11	LEONARD, KELVIN	PARK IN HANDICAP PARKING
16-1166J11	VAZQUEZ, TERESA	PARK IN HANDICAP PARKING
16-1167J11	CAMPOS, ELENA YEPEZ	PARK IN HANDICAP PARKING
16-1168J11	MUNOZ, ADAN, Jr.	PARK IN HANDICAP PARKING
16-1169J11	KELAIDITIS, GEORGIOS	PARK IN HANDICAP PARKING
16-1170J11	CHRISTIANSEN, TERRY	PARK IN HANDICAP PARKING
16-1172J11	WHITE, RICHARD	PARK IN HANDICAP PARKING
16-1173J11	SANCHEZ, ANA LIDIA	PARK IN HANDICAP PARKING
16-1174J11	Bosque, Elsa Miranda	PARK IN HANDICAP PARKING
16-1175J11	MAXWELL, CHERI MONIQUE	PARK IN HANDICAP PARKING
16-1193J11	WALKER, ARTHUR C	PARK IN HANDICAP PARKING
16-1195J11	SALDANA, SERGIO	PARK IN HANDICAP PARKING
16-1198J11	Ovalle, Christian R	PARK IN HANDICAP PARKING
16-1200J11	PERKINS, DENNIS LEE	PARK IN HANDICAP PARKING
16-1201J11	LOPEZ, DIANA M	PARK IN HANDICAP PARKING
16-1206J11	PEREZ, DOMINGO	PARK IN HANDICAP PARKING
16-1207J11	MONTICONE, DAVID KYLE	PARK IN HANDICAP PARKING
16-1209J11	URETSKY, MICHELLE ANN	PARK IN HANDICAP PARKING
16-1210J11	SOUTHWESTERN BAPTIST	PARK IN HANDICAP PARKING
16-1211J11	MAYS, JOEL RAY	PARK IN HANDICAP PARKING
16-1213J11	GONZALES, YOLANDA SAUCEDO	PARK IN HANDICAP PARKING
16-1219J11	Ray, Mark Byers	PARK IN HANDICAP PARKING
16-1220J11	SMITH, MARY	PARK IN HANDICAP PARKING
16-1272J11	SANCHEZ, OLGA	PARK IN HANDICAP PARKING
16-1400J11	RENFRO, DAVID W	PARK IN HANDICAP PARKING
16-1401J11	POOL, PATSY	PARK IN HANDICAP PARKING
16-1402J11	RAMIREZ, FELIPE T, Jr.	PARK IN HANDICAP PARKING

16-1403J11	MUNOZ, ANDRES	PARK IN HANDICAP PARKING
16-1404J11	THOMPSON, THOMAS	PARK IN HANDICAP PARKING
16-1405J11	EHRlich, LYNDELL R	PARK IN HANDICAP PARKING
16-1406J11	REED, BARBARA BURDITT	PARK IN HANDICAP PARKING
16-1407J11	Lyon, Bill M	PARK IN HANDICAP PARKING
16-1408J11	JACOBS, SHAWNA LEE	PARK IN HANDICAP PARKING
16-1409J11	REED, JANE BISHOP	PARK IN HANDICAP PARKING
16-1410J11	CRAIL, TROY L	PARK IN HANDICAP PARKING
16-1411J11	Lunsford, Tracy Jean	PARK IN HANDICAP PARKING
16-1412J11	HOLLEMAN FAMILY LIVING TRUST	PARK IN HANDICAP PARKING
16-1413J11	MANAKER, DAVID M	PARK IN HANDICAP PARKING
16-1414J11	BOONE, KENNETH	PARK IN HANDICAP PARKING
16-1415J11	KERR, CAROL SHORT	PARK IN HANDICAP PARKING
16-1416J11	Leal, Eva	PARK IN HANDICAP PARKING
16-1510J11	RHODES, KERI JEANNE	PARK IN HANDICAP PARKING
16-1512J11	EADY, TOMMY	PARK IN HANDICAP PARKING
16-1513J11	Espinoza, Christopher Jesus	PARK IN HANDICAP PARKING
16-1514J11	NELIGAN, CLAUDETTE	PARK IN HANDICAP PARKING
16-1515J11	Alba, Lorie J	PARK IN HANDICAP PARKING
16-1516J11	DAVIS, SAYA MARIE PENELOPE	PARK IN HANDICAP PARKING
16-1517J11	THOMPSON, JOYCE	PARK IN HANDICAP PARKING
16-1518J11	LOVELY, WENDY LOU	PARK IN HANDICAP PARKING
16-1519J11	ORLOFF, NICHOLE MARIE	PARK IN HANDICAP PARKING
16-1520J11	CISNEROS, ROSEMARY	PARK IN HANDICAP PARKING
16-1521J11	CALERON, RICARDO MARIANO	PARK IN HANDICAP PARKING
16-1522J11	Cooper, David Jennings	PARK IN HANDICAP PARKING
16-1524J11	TRICE, JERILYNN	PARK IN HANDICAP PARKING
16-1525J11	PARKER, DONNA	PARK IN HANDICAP PARKING
16-1527J11	FRIEDMAN, HENRY R	PARK IN HANDICAP PARKING
16-1528J11	CONOLLY, NORMA H	PARK IN HANDICAP PARKING
16-1529J11	REYES, JOSE B	PARK IN HANDICAP PARKING

16-1555J11	OQUINN, SHARON ANN	PARK IN HANDICAP PARKING
16-1556J11	VALLE, MOISES	PARK IN HANDICAP PARKING
16-1557J11	GUERRERO, MARCELO	PARK IN HANDICAP PARKING
16-1558J11	GONZALES, ENIS CAROLINA	PARK IN HANDICAP PARKING
16-1560J11	BAXTER, DEBBIE	PARK IN HANDICAP PARKING
16-1561J11	NEWSOM, JUSTIN	PARK IN HANDICAP PARKING
16-1563J11	OCASIO, RAY	PARK IN HANDICAP PARKING
16-1564J11	BURKE, CHARLES JOSEPH	PARK IN HANDICAP PARKING
16-1565J11	BREEST, LOUIS KLIMMER	PARK IN HANDICAP PARKING
16-1566J11	POESCHL, MICHAEL DANIEL	PARK IN HANDICAP PARKING
16-1567J11	KEITH, CYNTHIA ELLEN	PARK IN HANDICAP PARKING
16-1569J11	SHOEMAKER-BEAL, ROBERTA	PARK IN HANDICAP PARKING
16-1570J11	SIEGER, PATRICIA RILEY	PARK IN HANDICAP PARKING
16-1571J11	LUTHE, FRED L	PARK IN HANDICAP PARKING
16-1574J11	BELL, TROY JAMES, Sr.	PARK IN HANDICAP PARKING
16-1620J11	VASQUEZ, OFELIA P	PARK IN HANDICAP PARKING
16-1621J11	MYERS, AMY M	PARK IN HANDICAP PARKING
16-1622J11	GONZALES, MOSES C	PARK IN HANDICAP PARKING
16-1623J11	CLEVINGER, JUDITH HUGHES	PARK IN HANDICAP PARKING
16-1624J11	SAUCEDO, MARIO	PARK IN HANDICAP PARKING
16-1625J11	LEWIS, DAWN PEARCE	PARK IN HANDICAP PARKING
16-1626J11	PALMER, MATTHEW JAY	PARK IN HANDICAP PARKING
16-1627J11	EDSELL, CECILIA	PARK IN HANDICAP PARKING
16-1628J11	Kirkham, Robert William	PARK IN HANDICAP PARKING
16-1629J11	GARRETT, JENA	PARK IN HANDICAP PARKING
16-1630J11	JEFFERSON, ALVIN	PARK IN HANDICAP PARKING
16-1631J11	SUSTAITA, MARIA ELENA	PARK IN HANDICAP PARKING
16-1632J11	REINBURG, CLAYTON J	PARK IN HANDICAP PARKING
16-1633J11	TREVINO, JUAN JOSE	PARK IN HANDICAP PARKING
16-1637J11	HAUSER, COLBY T	PARK IN HANDICAP PARKING
16-1638J11	Urquiza, Patricia	PARK IN HANDICAP PARKING

16-1640J11	POLK, KIMBERLY HENDRY	PARK IN HANDICAP PARKING
16-1642J11	MCELROY, LORI LEE	PARK IN HANDICAP PARKING
16-1645J11	SANDERS, FRANKLIN, Jr.	PARK IN HANDICAP PARKING
16-1648J11	SANCHEZ, BRIAN	PARK IN HANDICAP PARKING
16-1650J11	RASCO, LINDA C	PARK IN HANDICAP PARKING
16-1651J11	Robertson, David James	PARK IN HANDICAP PARKING
16-1652J11	Martinez, Juanita	PARK IN HANDICAP PARKING
16-1653J11	RIOS, DANIEL	PARK IN HANDICAP PARKING
16-1654J11	Richards, Betty	PARK IN HANDICAP PARKING
16-1708J11	FORADORY, ARNOLD E.	PARK IN HANDICAP PARKING
16-1709J11	AYOUBI, LARISSA NICHOLE	PARK IN HANDICAP PARKING
16-1710J11	D.I. PETERSON TRUST	PARK IN HANDICAP PARKING
16-1711J11	Enriquez, Lucindo, Jr.	PARK IN HANDICAP PARKING
16-1713J11	Herrera, Gloria	PARK IN HANDICAP PARKING
16-1714J11	HERRERA, ROSE	PARK IN HANDICAP PARKING
16-1717J11	WELLS, BILLIE V	PARK IN HANDICAP PARKING
16-1718J11	Molina, Isidra	PARK IN HANDICAP PARKING
16-1719J11	GUTIERREZ, ADRIANA HERRERA	PARK IN HANDICAP PARKING
16-1721J11	PULLAM, WILLIAM L	PARK IN HANDICAP PARKING
16-1723J11	ROBINSON, CHARLES EDWARD	PARK IN HANDICAP PARKING
16-1725J11	WILSON, BILSON MAURICE	PARK IN HANDICAP PARKING
16-1726J11	PLATA, MARIA SALAZAR	PARK IN HANDICAP PARKING
16-1727J11	PONCE, MARIA GUADALUPE	PARK IN HANDICAP PARKING
16-1728J11	JACKSON, GERMAINE YVETTE	PARK IN HANDICAP PARKING
16-1729J11	SCHOETTLE, MORRISS JOHN, Jr.	PARK IN HANDICAP PARKING
16-1940J11	PUENTES, FRANK	PARK IN HANDICAP PARKING
16-2073J11	IQBAL, KARIM KHALID	PARK IN HANDICAP PARKING
16-2074J11	MILLER, TERESA	PARK IN HANDICAP PARKING
16-2075J11	RAMSEY, JANETTE PEARSON	PARK IN HANDICAP PARKING
16-2077J11	SWEENEY, GEORGE MILTON	PARK IN HANDICAP PARKING
16-2136J11	BARNES, MYRON TYRELL	PARK IN HANDICAP PARKING

16-2137J11	SCOTT, LINDA J	PARK IN HANDICAP PARKING
16-2138J11	GARZA, JUAN	PARK IN HANDICAP PARKING
16-2249J11	Ousley, Judy Kay	PARK IN HANDICAP PARKING
16-2252J11	WOODARD, JIMMIE LLOYD	PARK IN HANDICAP PARKING
16-2565J11	CERRITOS, CHRISTINA MARIA	PARK IN HANDICAP PARKING
16-2566J11	COLE, CONNIE L	PARK IN HANDICAP PARKING
16-2567J11	MITCHELL, LINA ARISPE	PARK IN HANDICAP PARKING
16-2645J11	SMITH, ERNIE R	PARK IN HANDICAP PARKING
16-2713J11	Hernandez, Crespin C	PARK IN HANDICAP PARKING
16-2715J11	Rivera, Robert Landeros	PARK IN HANDICAP PARKING
16-2716J11	FROST, SHERRI L	PARK IN HANDICAP PARKING
16-2754J11	PACE, PATRICIA	PARK IN HANDICAP PARKING
16-2798J11	ANCIRA, MITCHELL	PARK IN HANDICAP PARKING
16-2799J11	Hill, Donald	PARK IN HANDICAP PARKING
16-2804J11	COLLIGNON, KEITH W	PARK IN HANDICAP PARKING
16-2805J11	Ross, Michael Lee	PARK IN HANDICAP PARKING
16-2806J11	FRANKLIN, RAY NATHANIAL, Jr.	PARK IN HANDICAP PARKING
16-2984J11	PARKER, MICHAELAE P	PARK IN HANDICAP PARKING
16-2985J11	MCMILLAN, LAQUITA	PARK IN HANDICAP PARKING
16-2986J11	SCOTT, RONALD	PARK IN HANDICAP PARKING
16-2987J11	GISELL, MICHAEL BRUCE	PARK IN HANDICAP PARKING
16-3351J11	STOMBERT, CYNTHIA M	PARK IN HANDICAP PARKING
16-3352J11	JONES, JERROLD A	PARK IN HANDICAP PARKING
16-3353J11	Vela, Mark	PARK IN HANDICAP PARKING
16-3355J11	HERRERA, LINDA MARIE	PARK IN HANDICAP PARKING
16-3357J11	CASTILLO, FRANCES GONZALES	PARK IN HANDICAP PARKING
16-3358J11	GONZALES, VELMA VALLES	PARK IN HANDICAP PARKING
16-3359J11	ZWINK, ROBERT	PARK IN HANDICAP PARKING
16-3360J11	THOMPSON, CHARLES	PARK IN HANDICAP PARKING
16-3361J11	BRADLEY, IRASEMA	PARK IN HANDICAP PARKING
16-3362J11	Zamora, Leroy	PARK IN HANDICAP PARKING

16-3363J11	WEIKERT, HENRY CHARLES	PARK IN HANDICAP PARKING
16-3364J11	COBLER, MATTHEW RYAN	PARK IN HANDICAP PARKING
16-3368J11	Skoruppa, Tommy Lee	PARK IN HANDICAP PARKING
16-3369J11	JEWELL, IRMA MARTINEZ	PARK IN HANDICAP PARKING
16-3371J11	BELL, BETTY KEENJ	PARK IN HANDICAP PARKING
16-3372J11	ELKINS, MARIA	PARK IN HANDICAP PARKING
16-3373J11	CANO, GREGORY LAFUENTE	PARK IN HANDICAP PARKING
16-3374J11	YOUNG, MARGO	PARK IN HANDICAP PARKING
16-3398J11	STEPHENS, TERI LEE	PARK IN HANDICAP PARKING
16-3399J11	HENRY, LISA MARIE	PARK IN HANDICAP PARKING
16-3400J11	PATEL, SURESH C	PARK IN HANDICAP PARKING
16-3401J11	MAYFIELD, DAVID VAUGHN	PARK IN HANDICAP PARKING
16-3403J11	Burdett-Sutton, Antonietta Ynonne	PARK IN HANDICAP PARKING
16-3405J11	Tarbutton, Edward	PARK IN HANDICAP PARKING
16-3464J11	Borthwick, Harry	PARK IN HANDICAP PARKING
16-3465J11	WILLIAMS-WESLEY, SHEENIA	PARK IN HANDICAP PARKING
16-3468J11	BERNABE, NESTOR	PARK IN HANDICAP PARKING
16-3469J11	ESCAMILLA, JUAN ALEJANDRO	PARK IN HANDICAP PARKING
16-3470J11	COOK, JAMES R	PARK IN HANDICAP PARKING
16-3471J11	HUBBARD, AMELIA FAYE	PARK IN HANDICAP PARKING
16-3472J11	PRICE, MICHAEL CHARLES	PARK IN HANDICAP PARKING
16-3473J11	WALDREP, SUSAN CLEMENTS	PARK IN HANDICAP PARKING
16-3474J11	GEORGE, MELINDA A	PARK IN HANDICAP PARKING
16-3476J11	SMITHFALLGREN, ZOE	PARK IN HANDICAP PARKING
16-3477J11	Vega, Johanna	PARK IN HANDICAP PARKING
16-3478J11	Green, Joanna Marie	PARK IN HANDICAP PARKING
16-3481J11	MESSINA, GREG	PARK IN HANDICAP PARKING
16-3532J11	CRUZ, CHRISTY	PARK IN HANDICAP PARKING
16-3533J11	KIM, SO YOUNG	PARK IN HANDICAP PARKING
16-3534J11	KARCH, ALBERT	PARK IN HANDICAP PARKING
16-3587J11	MIRELES, JOSE L	PARK IN HANDICAP PARKING

16-3588J11	MEYER, LAWRENCE	PARK IN HANDICAP PARKING
16-3591J11	LASKO, STEPHEN HARVEY	PARK IN HANDICAP PARKING
16-3592J11	Vela, Joe, Jr.	PARK IN HANDICAP PARKING
16-3595J11	GRANATO, NANCY O	PARK IN HANDICAP PARKING
16-3596J11	RODRIGUEZ, RUBEN	PARK IN HANDICAP PARKING
16-3597J11	HERNANDEZ, ROBERT	PARK IN HANDICAP PARKING
16-3598J11	Brashears, Maxey	PARK IN HANDICAP PARKING
16-3599J11	GALAN, MARY	PARK IN HANDICAP PARKING
16-3600J11	Bolton, Henry D.	PARK IN HANDICAP PARKING
16-3601J11	GIBBS, MARY SUE	PARK IN HANDICAP PARKING
16-3678J11	Muldrow, Clark Lee, Jr.	PARK IN HANDICAP PARKING
16-3739J11	Leal, Jimmy Edward	PARK IN HANDICAP PARKING
16-3740J11	MORGAN, CHARLES DOUGLAS	PARK IN HANDICAP PARKING
16-3741J11	DEAN, CHRISTINA MICHELE	PARK IN HANDICAP PARKING
16-3742J11	LAMASTER, JANE	PARK IN HANDICAP PARKING
16-3743J11	GRIJSEN, JOHANNES GEERT	PARK IN HANDICAP PARKING
16-3746J11	QUINTANILLA, ROSA M	PARK IN HANDICAP PARKING
16-3747J11	WOOD, GEORGEANNA	PARK IN HANDICAP PARKING
16-3748J11	AYALA, GABRIEL	PARK IN HANDICAP PARKING
16-3749J11	BRAUNE, GLEN R	PARK IN HANDICAP PARKING
16-3750J11	HATHERLY, MARIA E	PARK IN HANDICAP PARKING
16-3751J11	Siller, Jose Enrique	PARK IN HANDICAP PARKING
16-3752J11	ADAMSON, JEAN ANN	PARK IN HANDICAP PARKING
16-3840J11	BEGIS, COOPER LOUIS	PARK IN HANDICAP PARKING
16-3841J11	Keller, Carol Kay	PARK IN HANDICAP PARKING
16-3842J11	Jenkins, Becky B	PARK IN HANDICAP PARKING
16-3843J11	SATORRE, ALOYSIUS C	PARK IN HANDICAP PARKING
16-3844J11	HULVEY, GEMMA	PARK IN HANDICAP PARKING
16-3845J11	King, Leland	PARK IN HANDICAP PARKING
16-3846J11	BROWN, MICHAEL CHASE	PARK IN HANDICAP PARKING
16-3847J11	SANCHEZ, SYVIA M	PARK IN HANDICAP PARKING

16-3848J11	ALMENGOR, RAFAEL	PARK IN HANDICAP PARKING
16-3849J11	Moyer, Winnie M	PARK IN HANDICAP PARKING
16-3850J11	GORNEY, WILLIAM J	PARK IN HANDICAP PARKING
16-3944J11	STONE, MICHAEL CRAIG	PARK IN HANDICAP PARKING
16-3946J11	BRADY, LORI ANN	PARK IN HANDICAP PARKING
16-3947J11	MARTIN, ROBERT	PARK IN HANDICAP PARKING
16-3950J11	HAGEDORN, TANIA O'BANION	PARK IN HANDICAP PARKING
16-3952J11	RODRIGUEZ, ANDREW	PARK IN HANDICAP PARKING
16-4003J11	ESCAMILLA, BARBARA DONLEY	PARK IN HANDICAP PARKING
16-4004J11	COLEMAN, CLEVELAND KELLY, Jr.	PARK IN HANDICAP PARKING
16-4005J11	HIM, JAMES MICHAEL	PARK IN HANDICAP PARKING
16-4026J11	Crayton, Diane	PARK IN HANDICAP PARKING
16-4027J11	FUTCH, TOMMY LEE	PARK IN HANDICAP PARKING
16-4028J11	PETERSON, HENRY	PARK IN HANDICAP PARKING
16-4029J11	Gillis, Michael Anthony, Sr.	PARK IN HANDICAP PARKING
16-4030J11	LEINNEWEBER PLUMBING	PARK IN HANDICAP PARKING
16-4031J11	JUAREZ, FLORA E	PARK IN HANDICAP PARKING
16-4032J11	STARK, MARILYN SHAW	PARK IN HANDICAP PARKING
16-4034J11	VIDOURIA, HERMAN ROSITAS	PARK IN HANDICAP PARKING
16-4035J11	Hawn, John	PARK IN HANDICAP PARKING
16-4036J11	CITY OF LOCKHART HOUSING AUTHORITY	PARK IN HANDICAP PARKING
16-4037J11	SANDOVAL, NOEMI SOLIS	PARK IN HANDICAP PARKING
16-4038J11	Brooks, Donn Patton	PARK IN HANDICAP PARKING
16-4039J11	BORCHERT, LOUIS	PARK IN HANDICAP PARKING
16-4041J11	Horst, Bradley Robert	PARK IN HANDICAP PARKING
16-4043J11	BOTELLO, JOAQUIN	PARK IN HANDICAP PARKING
16-4044J11	WHARTON, BETTY DIANE	PARK IN HANDICAP PARKING
16-4045J11	EAN HOLDINGS	PARK IN HANDICAP PARKING
16-4088J11	Walter, Kimberley Rachel	PARK IN HANDICAP PARKING
16-4089J11	ROWTON, DAVID SCOTT	PARK IN HANDICAP PARKING
16-4090J11	WILLY, DARLA PAGE	PARK IN HANDICAP PARKING

16-4091J11	SUPPLEE, JOAN ELLEN	PARK IN HANDICAP PARKING
16-4092J11	SSH AUTO LEASE MANAGEMENT	PARK IN HANDICAP PARKING
16-4093J11	GORNEY, WILLIAM J	PARK IN HANDICAP PARKING
16-4095J11	MURDOCH, DEANNA M	PARK IN HANDICAP PARKING
16-4096J11	Muniz, Juan	PARK IN HANDICAP PARKING
16-4100J11	ALLEN, VIOLET J	PARK IN HANDICAP PARKING
16-4101J11	KOEHN, DERCK EDWIN	PARK IN HANDICAP PARKING
16-4106J11	PORTER, SANDRA LEE	PARK IN HANDICAP PARKING
16-4107J11	PARRA, JUAN	PARK IN HANDICAP PARKING
16-4110J11	WILKINSON, NENA BRANNON	PARK IN HANDICAP PARKING
16-4112J11	Morris, Karlen Gay	PARK IN HANDICAP PARKING
16-4113J11	GARCIA, MARIA LOPEZ	PARK IN HANDICAP PARKING
16-4189J11	NATIONAL APPEAL OF CENTRAL TX	PARK IN HANDICAP PARKING
16-4190J11	SANDOVAL, JOSE S	PARK IN HANDICAP PARKING
16-4191J11	RODRIGUEZ, LILIA CANO	PARK IN HANDICAP PARKING
16-4192J11	FLOREZ, NORMA	PARK IN HANDICAP PARKING
16-4193J11	MCCULLOUGH, RUBY MCKENZIE	PARK IN HANDICAP PARKING
16-4194J11	Beggs, Natasha Lynn	PARK IN HANDICAP PARKING
16-4195J11	JOHNSON, JEREMY B	PARK IN HANDICAP PARKING
16-4196J11	Banda, David Rodriguez	PARK IN HANDICAP PARKING
16-4197J11	BARDFORD, PIERCE HARLAN	PARK IN HANDICAP PARKING
16-4327J11	SALAUN, MYRNA	PARK IN HANDICAP PARKING
16-4328J11	BEARDEN, ROSIE THRAILKILL	PARK IN HANDICAP PARKING
16-4329J11	Morrell, Judy A	PARK IN HANDICAP PARKING
16-4330J11	Kunz, Diane Marie	PARK IN HANDICAP PARKING
16-4331J11	HEBEL, THOMAS KIRK	PARK IN HANDICAP PARKING
16-4332J11	LYON, LEE	PARK IN HANDICAP PARKING
16-4333J11	SANDOVAL, ANGELICA AGUILAR	PARK IN HANDICAP PARKING
16-4444J11	Garza, Benito, Jr.	PARK IN HANDICAP PARKING
16-4445J11	Kuhl, Michael E	PARK IN HANDICAP PARKING
16-4446J11	ALMAREZ DELATORRE, KAREN	PARK IN HANDICAP PARKING

16-4447J11	Knepp, Jay Franklin	PARK IN HANDICAP PARKING
17-0010J11	Arch, Christopher Charles	PARK IN HANDICAP PARKING
17-0011J11	FEDERAL EXPRESS CORPORATION	PARK IN HANDICAP PARKING
17-0012J11	RODRIGUEZ, ANNA MARIE	PARK IN HANDICAP PARKING
17-0013J11	Sayen, Rita R.	PARK IN HANDICAP PARKING
17-0014J11	FREEMAN, KIMBERLEY ERIN	PARK IN HANDICAP PARKING
17-0015J11	EAN HOLDINGS	PARK IN HANDICAP PARKING
17-0048J11	Guerrero, Thomas Garza	PARK IN HANDICAP PARKING
17-0049J11	GUERRA, DIANA U	PARK IN HANDICAP PARKING
17-0051J11	ALATEYAH, ALI MOHAMMED	PARK IN HANDICAP PARKING
17-0154J11	Lopez, Samuel	PARK IN HANDICAP PARKING
17-0160J11	Buentello, Aaron Mel	PARK IN HANDICAP PARKING
17-0161J11	DULIN, JOSEPH	PARK IN HANDICAP PARKING
17-0162J11	COPE, ERNESTINE	PARK IN HANDICAP PARKING
17-0163J11	BATTLES, JERMAINE	PARK IN HANDICAP PARKING
17-0164J11	TREVINO, JAMIE	PARK IN HANDICAP PARKING
17-0165J11	CLAY, PAUL GENE	PARK IN HANDICAP PARKING
17-0166J11	Holley, Charles	PARK IN HANDICAP PARKING
17-0167J11	TERAN, FRANCISCA MARTINEZ	PARK IN HANDICAP PARKING
17-0168J11	THOMPSON, PAUL JAMES, Jr.	PARK IN HANDICAP PARKING
17-0170J11	ROSSON, NATHAN ROBERT	PARK IN HANDICAP PARKING
17-0171J11	WHALON, LEE O	PARK IN HANDICAP PARKING
17-0172J11	Deleon, Rodrigo Dimas	PARK IN HANDICAP PARKING
17-0173J11	CAMP, JIMMY LEE	PARK IN HANDICAP PARKING
17-0174J11	Cisneros, Norma	PARK IN HANDICAP PARKING
17-0175J11	TOBAR, SAMMY LUNA	PARK IN HANDICAP PARKING
17-0193J11	MAYO, NORMA JEANETTE	PARK IN HANDICAP PARKING
17-0194J11	Matthews-Snow, Tamesha	PARK IN HANDICAP PARKING
17-0201J11	CARDENAS, ERICA	PARK IN HANDICAP PARKING
17-0202J11	Munson, Karen Lyle	PARK IN HANDICAP PARKING
17-0203J11	BLUE, ELAINE	PARK IN HANDICAP PARKING

17-0204J11	Watts, Todd Lorrin	PARK IN HANDICAP PARKING
17-0205J11	MOSKAL, LLOYD DANIEL	PARK IN HANDICAP PARKING
17-0206J11	CISNEROS, CASSANDRA MARTINEZ	PARK IN HANDICAP PARKING
17-0207J11	BUCK, BRIAN CHARLES	PARK IN HANDICAP PARKING
17-0208J11	Sundholm, Lynn	PARK IN HANDICAP PARKING
17-0210J11	EAN HOLDINGS	PARK IN HANDICAP PARKING
17-0211J11	Velasquez-Spruell, Deborah	PARK IN HANDICAP PARKING
17-0212J11	TRUST, LAI	PARK IN HANDICAP PARKING
17-0213J11	MUNGUIA, TONY	PARK IN HANDICAP PARKING
17-0214J11	HOUSE, JULIE GARRETT	PARK IN HANDICAP PARKING
17-0215J11	Darnell, Craig Douglas	PARK IN HANDICAP PARKING
17-0239J11	LATHAM, HOLLY	PARK IN HANDICAP PARKING
17-0240J11	Engle, Joseph	PARK IN HANDICAP PARKING
17-0241J11	TURNER, NORA Y	PARK IN HANDICAP PARKING
17-0242J11	Blythe, Kenneth	PARK IN HANDICAP PARKING
17-0244J11	Horst, Bradley Robert	PARK IN HANDICAP PARKING
17-0245J11	Perieda, John Joseph	PARK IN HANDICAP PARKING
17-0247J11	HARTLINE, CLYDE VERNON, Jr.	PARK IN HANDICAP PARKING
17-0248J11	BONILLA, VIRGILIO	PARK IN HANDICAP PARKING
17-0249J11	RHODES, DENNIS COLEMAN	PARK IN HANDICAP PARKING
17-0251J11	CROWN ROOFING AND CONSTRUCTION	PARK IN HANDICAP PARKING
17-0252J11	MILLER, STEPHANIE ANNE	PARK IN HANDICAP PARKING
17-0253J11	POLANCO, DAMIAN	PARK IN HANDICAP PARKING
17-0254J11	BRYAN, JUSTICE ISAIAH	PARK IN HANDICAP PARKING
17-0257J11	EVANS, EMMA NELL	PARK IN HANDICAP PARKING
17-0259J11	MAYFIELD, DAVID VAUGHN	PARK IN HANDICAP PARKING
17-0260J11	CAIN, VERNON WESLEY	PARK IN HANDICAP PARKING
17-0261J11	Wehrman, Nathan	PARK IN HANDICAP PARKING
17-0262J11	GONZALEZ, HECTOR PALENCIA	PARK IN HANDICAP PARKING
17-0263J11	Allmon, Charlene ELDA	PARK IN HANDICAP PARKING

17-0264J11	Butler, Jerry Michael	PARK IN HANDICAP PARKING
17-0265J11	SAUCEDO, MARIO	PARK IN HANDICAP PARKING
17-0266J11	LOPEZ, JACOB TYLER	PARK IN HANDICAP PARKING
17-0267J11	CHAMBERLAIN, JOHN PAUL	PARK IN HANDICAP PARKING
17-0268J11	HOLMES, JODY WAYNE	PARK IN HANDICAP PARKING
17-0315J11	Szoboszlay, Mike J	PARK IN HANDICAP PARKING
17-0317J11	King, Shirlee	PARK IN HANDICAP PARKING
17-0318J11	EAN HOLDINGS LLC	PARK IN HANDICAP PARKING
17-0320J11	GATES, GARY CLAYBORN	PARK IN HANDICAP PARKING
17-0321J11	Vandall, Deanna G	PARK IN HANDICAP PARKING
17-0322J11	Croteau, Valerie	PARK IN HANDICAP PARKING
17-0323J11	NWANKSO, TERI NICOLE	PARK IN HANDICAP PARKING
17-0325J11	KASPAR, JOSHUA WILLIAM	PARK IN HANDICAP PARKING
17-0326J11	JOHNSON, CECILIA BUNKER	PARK IN HANDICAP PARKING
17-0327J11	NORTH, JANICE GAIL	PARK IN HANDICAP PARKING
17-0329J11	ZUNIGA, FILIBERTO ALVARADO	PARK IN HANDICAP PARKING
17-0331J11	Dugger, Rockie Lane	PARK IN HANDICAP PARKING
17-0333J11	Lozano, Virginia	PARK IN HANDICAP PARKING
17-0334J11	Sayen, Rita RUTH	PARK IN HANDICAP PARKING
17-0335J11	BEMIS, RODGER D	PARK IN HANDICAP PARKING
17-0336J11	URIAS, DORA PEREZ	PARK IN HANDICAP PARKING
17-0337J11	Williams, Marsha	PARK IN HANDICAP PARKING
17-0339J11	FOSTER, AUANITA A	PARK IN HANDICAP PARKING
17-0340J11	MALDONADO, JUAN DAVID	PARK IN HANDICAP PARKING
17-0341J11	MANZEL, REBECCA LYNN	PARK IN HANDICAP PARKING
17-0342J11	KONDZIOLA, ALAN THOMA	PARK IN HANDICAP PARKING
17-0345J11	DELEON, JOSEPH JAMES	PARK IN HANDICAP PARKING
17-0384J11	Moss, Briana JoAnn	PARK IN HANDICAP PARKING
17-0386J11	Tovar, John Paul	PARK IN HANDICAP PARKING
17-0387J11	HARBIN, GLENDA MAE	PARK IN HANDICAP PARKING
17-0388J11	ALCOZER, JENNIFER	PARK IN HANDICAP PARKING

17-0392J11	MCILVAINE, BARBARA C	PARK IN HANDICAP PARKING
17-0393J11	Garcia, Susan Terrazas	PARK IN HANDICAP PARKING
17-0394J11	SHENKIR, FLOYD G	PARK IN HANDICAP PARKING
17-0432J11	WIMBERLY, CHERYL	PARK IN HANDICAP PARKING
17-0457J11	GARCIA, MARYCRUZ HUERTA	PARK IN HANDICAP PARKING
17-0458J11	NILSON, GARY LEROY	PARK IN HANDICAP PARKING
17-0480J11	RODRIGUEZ, MATTHEW RYAN	PARK IN HANDICAP PARKING
17-0481J11	STEVENSON, ROSALVA PEREZ	PARK IN HANDICAP PARKING
17-0482J11	CARTRITE, KERRY	PARK IN HANDICAP PARKING
17-0483J11	MORENO, DORA GARZA	PARK IN HANDICAP PARKING
17-0484J11	GUITIERREZ, ROBERT	PARK IN HANDICAP PARKING
17-0485J11	BERMEA, ALICE D	PARK IN HANDICAP PARKING
17-0487J11	LUCIO, DELLA ADELITZ	PARK IN HANDICAP PARKING
17-0489J11	WELCH, DONALD	PARK IN HANDICAP PARKING
17-0499J11	KING, ALICIA ANTONIA	PARK IN HANDICAP PARKING
17-0506J11	NAJMI, Awni Adnan	PARK IN HANDICAP PARKING
17-0507J11	QUIROZ, VIRGINIA P.	PARK IN HANDICAP PARKING
17-0508J11	DERR, DONALD ALLEN	PARK IN HANDICAP PARKING
17-0509J11	DANIEL, WAYNE L	PARK IN HANDICAP PARKING
17-0515J11	OHLENDORF, MICHAEL W	PARK IN HANDICAP PARKING
17-0516J11	VAN LE, SAM	PARK IN HANDICAP PARKING
17-0517J11	GARCIA, MARTIN	PARK IN HANDICAP PARKING
17-0518J11	Guzman, Christian Lee	PARK IN HANDICAP PARKING
17-0523J11	BROWN, EDDIE HAROLD, III	PARK IN HANDICAP PARKING
17-0524J11	Vargas, Shane	PARK IN HANDICAP PARKING
17-0525J11	LEE, LISA	PARK IN HANDICAP PARKING
17-0563J11	VAZQUEZ DE ESPANA, MARIA ESTEL	PARK IN HANDICAP PARKING
17-0564J11	ROBB, TIMOTHY A	PARK IN HANDICAP PARKING
17-0565J11	HALL, JANET K	PARK IN HANDICAP PARKING
17-0566J11	GONZALES, MARIA JUAREZ	PARK IN HANDICAP PARKING
17-0567J11	DOCKERY, MONICA LYNN	PARK IN HANDICAP PARKING

17-0568J11	RIOS, JOAQUIN G	PARK IN HANDICAP PARKING
17-0570J11	HERNANDEZ, YOLANDA	PARK IN HANDICAP PARKING
17-0581J11	Park, Vanessa Jo	PARK IN HANDICAP PARKING
17-0582J11	DOMINY, LEA	PARK IN HANDICAP PARKING
17-0583J11	Locke, John Robert	PARK IN HANDICAP PARKING
17-0584J11	Rogers, Ivan Paul	PARK IN HANDICAP PARKING
17-0607J11	MEINERS, PEGGY SWITZER	PARK IN HANDICAP PARKING
17-0609J11	GOAR, BARRY GENE	PARK IN HANDICAP PARKING
17-0611J11	Reyes, Veronica	PARK IN HANDICAP PARKING
17-0612J11	HURON, SULENA FLORES	PARK IN HANDICAP PARKING
17-0613J11	Carranza, Javier Cisneros	PARK IN HANDICAP PARKING
17-0615J11	ROBERTS, JOSEPHINE ROSALES	PARK IN HANDICAP PARKING
17-0616J11	SILVA-TREVINO, BLANCA E	PARK IN HANDICAP PARKING
17-0617J11	MENDEZ, RISELDA	PARK IN HANDICAP PARKING
17-0618J11	Trevino, David James	PARK IN HANDICAP PARKING
17-0619J11	MAINORD, RIANNA	PARK IN HANDICAP PARKING
17-0620J11	HUDSON, APRIL MICHELLE	PARK IN HANDICAP PARKING
17-0621J11	DAVIS, ROBERT	PARK IN HANDICAP PARKING
17-0622J11	PRATER, ROCHELL	PARK IN HANDICAP PARKING
17-0658J11	YOUNG, GLORIA SNOWDEN	PARK IN HANDICAP PARKING
17-0659J11	MARTINKA, COLBY	PARK IN HANDICAP PARKING
17-0660J11	Gay, Diane	PARK IN HANDICAP PARKING
17-0661J11	RICK'S LOCK & KEY SERVICE	PARK IN HANDICAP PARKING
17-0663J11	PAYTON, JAMES EARL	PARK IN HANDICAP PARKING
17-0665J11	REAGAN, MARY LYNNE	PARK IN HANDICAP PARKING
17-0674J11	VIANA, JENNIE E	PARK IN HANDICAP PARKING
17-0675J11	Machado, Tommy	PARK IN HANDICAP PARKING
17-0676J11	TRIBER MCDONALD ENTERPRISES	PARK IN HANDICAP PARKING
17-0677J11	Olenick, Louis, Jr.	PARK IN HANDICAP PARKING
17-0678J11	Gay, Diane	PARK IN HANDICAP PARKING
17-0680J11	DOMINY, COLLIN	PARK IN HANDICAP PARKING

17-0681J11	EAN HOLDINGS	PARK IN HANDICAP PARKING
17-0682J11	PRADO, MARIEA ZAMORA	PARK IN HANDICAP PARKING
17-0683J11	CONNER, JOSHUA THOMAS	PARK IN HANDICAP PARKING
17-0684J11	EDWARDS, JONATHAN	PARK IN HANDICAP PARKING
17-0685J11	SALINAS, ROMEO ROBERTO	PARK IN HANDICAP PARKING
17-0686J11	BROWN, SARAH	PARK IN HANDICAP PARKING
17-0720J11	Wheeler, Jeffrey Wayne	PARK IN HANDICAP PARKING
17-0721J11	Stockton, Melvin Ernest	PARK IN HANDICAP PARKING
17-0722J11	Hebert, Carol Jennings	PARK IN HANDICAP PARKING
17-0723J11	REEVES, LAURA MARTIN	PARK IN HANDICAP PARKING
17-0724J11	MAASKANT, JOHN CHARLES	PARK IN HANDICAP PARKING
17-0725J11	GRACE, MARQUIS	PARK IN HANDICAP PARKING
17-0726J11	Tonioni, Elizabeth L	PARK IN HANDICAP PARKING
17-0753J11	Green, Ross	PARK IN HANDICAP PARKING
17-0754J11	BRADLEY, ISAAC C	PARK IN HANDICAP PARKING
17-0756J11	GAMEZ, ELIZABETH LOPEZ	PARK IN HANDICAP PARKING
17-0757J11	ONGANIA, NICOLAS	PARK IN HANDICAP PARKING
17-0759J11	CRAFT, MARY LEE	PARK IN HANDICAP PARKING
17-0761J11	Rios, Pearla	PARK IN HANDICAP PARKING
17-0807J11	HAYES, THOMAS EDDIE	PARK IN HANDICAP PARKING
17-0808J11	ROMERO, JOHN PAUL	PARK IN HANDICAP PARKING
17-0810J11	Arredondo, Doraelia R	PARK IN HANDICAP PARKING
17-0811J11	REYES, MARCOS	PARK IN HANDICAP PARKING
17-0812J11	THOMPSON, CHARLES M	PARK IN HANDICAP PARKING
17-0813J11	SAN MARCOS CISD	PARK IN HANDICAP PARKING
17-0823J11	Murphree, Roger	PARK IN HANDICAP PARKING
17-0916J11	MCARTHUR, JOHN DOUGLAS	PARK IN HANDICAP PARKING
17-0966J11	GREEN, ROSS	PARK IN HANDICAP PARKING
17-1007J11	FAZZOLARI, MIGUEL	PARK IN HANDICAP PARKING
17-1008J11	JONES, GORDON	PARK IN HANDICAP PARKING
17-1045J11	METTS, HAROLD	PARK IN HANDICAP PARKING

17-1046J11	Romero, Michael	PARK IN HANDICAP PARKING
17-1150J11	RODRIGUEZ, ALEJANDRO	PARK IN HANDICAP PARKING
17-1151J11	HALLENBECK, SHARNETTE	PARK IN HANDICAP PARKING
17-1152J11	Smith, Cheryl	PARK IN HANDICAP PARKING
17-1153J11	CHRISMAN, JERRY	PARK IN HANDICAP PARKING
17-1154J11	Sony, Michael Patrick	PARK IN HANDICAP PARKING
17-1155J11	HOLMES, DONNA G	PARK IN HANDICAP PARKING
17-1156J11	HANN, JON TODD	PARK IN HANDICAP PARKING
17-1157J11	MILLER, ANNELIESE WALLY	PARK IN HANDICAP PARKING
17-1242J11	Pennington, Robert	PARK IN HANDICAP PARKING
17-1243J11	JETER, VALIANT KYLE	PARK IN HANDICAP PARKING
17-1244J11	ORTIZ, BRENDA GALLMAN	PARK IN HANDICAP PARKING
17-1342J11	SMITH, J M	PARK IN HANDICAP PARKING
17-1343J11	VILLEGAS, DAVID THOMAS	PARK IN HANDICAP PARKING
17-1406J11	Glenn, David H.	PARK IN HANDICAP PARKING
17-1407J11	BROADWAY, ASHLEY MICHELE	PARK IN HANDICAP PARKING
17-1408J11	Vance, India Joann	PARK IN HANDICAP PARKING
17-1498J11	SANTOS, JULIO CESAR, Jr.	PARK IN HANDICAP PARKING
17-1642J11	CARRASCO, VIRGINIA M	PARK IN HANDICAP PARKING
17-1662J11	Samaniego, Daniel Benjamin	PARK IN HANDICAP PARKING
17-1663J11	Garcia, Andres	PARK IN HANDICAP PARKING
17-1800J11	CEDILLO, ISAAC	PARK IN HANDICAP PARKING
17-1880J11	FRANKS, VELIA C	PARK IN HANDICAP PARKING
17-1918J11	CLEMENTS, PATRICIA FAULKNER	PARK IN HANDICAP PARKING
17-1919J11	PURTILL, THOMAS GREY	PARK IN HANDICAP PARKING
17-1920J11	Gomez, Esther Valdes	PARK IN HANDICAP PARKING
17-1921J11	RICHBURG, PAUL	PARK IN HANDICAP PARKING
17-1922J11	MARBRIDGE FOUNDATION	PARK IN HANDICAP PARKING
17-1923J11	Cruz-Amador, Jose Juan	PARK IN HANDICAP PARKING
17-1925J11	Williams, Dolia	PARK IN HANDICAP PARKING
17-1926J11	CHRISTIAN, MELISSA	PARK IN HANDICAP PARKING

17-1927J11	Fabian, Henry, Jr.	PARK IN HANDICAP PARKING
17-1928J11	CONGREGATION OF DIVINE PROVIDE	PARK IN HANDICAP PARKING
17-1929J11	WALLACE, WILLIAM EDWARD	PARK IN HANDICAP PARKING
17-1960J11	CARRERA, JORGE RODRIGUEZ	PARK IN HANDICAP PARKING
17-1961J11	PETERS, JOAN	PARK IN HANDICAP PARKING
17-1962J11	SANMIGUEL, MARTIN RENE FLORES	PARK IN HANDICAP PARKING
17-1963J11	FREEMAN, JEFFERY LOEHR	PARK IN HANDICAP PARKING
17-2008J11	ROTEN, ANDREA LYNN	PARK IN HANDICAP PARKING
17-2011J11	LI, CAIMIN	PARK IN HANDICAP PARKING
17-2012J11	GUERRA, ADELAIDA GARZA	PARK IN HANDICAP PARKING
17-2193J11	Neill, Marty Kayshia	PARK IN HANDICAP PARKING
18-0061J11	BEAIRD, CHARLES E	PARK IN HANDICAP PARKING
18-0062J11	LEVEY, JAY ROBERT	PARK IN HANDICAP PARKING
18-0271J11	SIGLER, JAMES M	PARK IN HANDICAP PARKING
18-0317J11	ANDERSON, DOUGLAS	PARK IN HANDICAP PARKING
18-0318J11	Valdez, Benito	PARK IN HANDICAP PARKING
18-0319J11	Flammang, Laura Lafleur	PARK IN HANDICAP PARKING
18-0409J11	BLACK, STEVEN W	PARK IN HANDICAP PARKING
CR13-056J11	Yaroslawski, Steven	PARK IN HANDICAP PARKING
CR13-057J11	Tauras, Velvet L	PARK IN HANDICAP PARKING
CR13-063J11	Patel, Magan C	PARK IN HANDICAP PARKING
CR13-064J11	Desai, Janak K	PARK IN HANDICAP PARKING
CR13-072J11	Lewis, Wanda	PARK IN HANDICAP PARKING
CR13-073J11	Waldrop, Robert J	PARK IN HANDICAP PARKING
CR13-074J11	Beels, Virginia K	PARK IN HANDICAP PARKING
CR14-007J11	Cisneros, John S	PARK IN HANDICAP PARKING
T14-0033J11	Eatmon, Christopher	PARK IN HANDICAP PARKING
T14-0034J11	Miller, Kenneth	PARK IN HANDICAP PARKING
T14-0035J11	Schultz, James	PARK IN HANDICAP PARKING
T14-0036J11	Acosta, Nora	PARK IN HANDICAP PARKING
T14-0037J11	Hampton, Robert S	PARK IN HANDICAP PARKING

T14-0038J11	Jr, Moses Urquiza	PARK IN HANDICAP PARKING
T14-0039J11	Mercer, Linda G	PARK IN HANDICAP PARKING
T14-0040J11	Hill, Rita L	PARK IN HANDICAP PARKING
T14-0042J11	Delgado, Jose Vazquez	PARK IN HANDICAP PARKING
T14-0044J11	Torres, Jose R	PARK IN HANDICAP PARKING
T14-0046J11	Umude, Stephanie	PARK IN HANDICAP PARKING
T14-0047J11	Riel, Richard J	PARK IN HANDICAP PARKING
T14-0048J11	Turley, Cynthia	PARK IN HANDICAP PARKING
T14-0049J11	Denneler, Maureen	PARK IN HANDICAP PARKING
T14-0050J11	Wells, Michael	PARK IN HANDICAP PARKING
T14-0051J11	Dozier-Haynes, Brenda	PARK IN HANDICAP PARKING
T14-0052J11	Holcomb, Charles	PARK IN HANDICAP PARKING
T14-0053J11	Valdez, Maria	PARK IN HANDICAP PARKING
T14-0054J11	Avalos, Michael	PARK IN HANDICAP PARKING
T14-0055J11	Hanks, Patsy L	PARK IN HANDICAP PARKING
T14-0056J11	Meador, Marl L	PARK IN HANDICAP PARKING
T14-0057J11	Jenkins, Irma	PARK IN HANDICAP PARKING
T14-0058J11	Lesche, Brandon	PARK IN HANDICAP PARKING
T14-0059J11	Mcabee, Cindy A	PARK IN HANDICAP PARKING
T14-0060J11	PINEDA, JOE, III	PARK IN HANDICAP PARKING
T14-0061J11	Basara, Michael F	PARK IN HANDICAP PARKING
T14-0079J11	Rodriguez, Luz Esperanza	PARK IN HANDICAP PARKING
T14-0110J11	Carter, Eula M	PARK IN HANDICAP PARKING
T14-0111J11	Harris, Edmund John	PARK IN HANDICAP PARKING
T14-0112J11	Gohde, Cindy	PARK IN HANDICAP PARKING
T14-0128J11	Hertz Vehicles Llc	PARK IN HANDICAP PARKING
T14-0135J11	Sims, Joshua B	PARK IN HANDICAP PARKING
T14-0137J11	Smith, Leslie S	PARK IN HANDICAP PARKING
T14-0140J11	Freeman, Gwendolyn	PARK IN HANDICAP PARKING
T14-0142J11	Lewis, Wanda	PARK IN HANDICAP PARKING
T14-0150J11	Holdings, Ean	PARK IN HANDICAP PARKING

T14-0151J11	LOUIS, PARKER	PARK IN HANDICAP PARKING
T14-0152J11	Andrade, Victor Ernest	PARK IN HANDICAP PARKING
T14-0153J11	Evers, Melody	PARK IN HANDICAP PARKING
T14-0155J11	Molina, Rogelio	PARK IN HANDICAP PARKING
T14-0156J11	SHAW, THOMAS D	PARK IN HANDICAP PARKING
T14-0157J11	Polanco-Solano, Luci	PARK IN HANDICAP PARKING
T14-0158J11	HELTON, DORA	PARK IN HANDICAP PARKING
T14-0164J11	Wilson, Ellen Lea	PARK IN HANDICAP PARKING
T14-0165J11	Higgins, Laure	PARK IN HANDICAP PARKING
T14-0172J11	Lopez, Elizabeth Ann	PARK IN HANDICAP PARKING
T14-0173J11	FORD, RONALD R	PARK IN HANDICAP PARKING

Case Assignment Report

TXHAYSPROD

Date Range: 01/01/2011 to 12/31/2018 Case Category: Appellate,Civil,Criminal,Family,Probate or Men Sorted Order: Filing Date

Date Range Type: File Date Case Types: All

Include Event Types: Abstract Of Judgment,Acquittal,Affidavit,Affidavit For Substituted Service,Affidavit of Business Records,Affidavit

Exclude Event Types:

County Judge

County Judge

Case Number	Filing Date	Case Type	Case Style	Case Flag
MG13-0001CJ	12/12/2013	Magistration	State of Texas vs. Megan Gillis	No
MG13-0002CJ	12/12/2013	Magistration	State of Texas vs. Charla Satterwhite	No
MG13-0003CJ	12/12/2013	Magistration	State of Texas vs. Geoffrey Burns	No
MG13-0004CJ	12/12/2013	Magistration	State of Texas vs. Pedro Melgar-Chavez	No
MG13-0005CJ	12/12/2013	Magistration	State of Texas vs. David Miller	No
MG13-0006CJ	12/12/2013	Magistration	State of Texas vs. Cynthia Calhoun	No
MG13-0007CJ	12/12/2013	Magistration	State of Texas vs. Diane Gatica	No
MG13-0008CJ	12/12/2013	Magistration	State of Texas vs. William Floyd	No
MG13-0009CJ	12/12/2013	Magistration	State of Texas vs. Christian Saucedo	No
MG13-0010CJ	12/12/2013	Magistration	State of Texas vs. Zachary Ruiz	No
MG13-0011CJ	12/12/2013	Magistration	State of Texas vs. Joshua Maldonado	No
MG13-0012CJ	12/12/2013	Magistration	State of Texas vs. James Citty	No
MG13-0013CJ	12/12/2013	Magistration	State of Texas vs. Ryan Freeman	No
MG14-0001CJ	01/15/2014	Magistration	State of Texas vs. Mariselda Jaimes	No
MG14-0003CJ	01/15/2014	Magistration	State of Texas vs. Kalaya Gaddis	No
MG14-0004CJ	01/15/2014	Magistration	State of Texas vs. Mary Satterwhite	No
MG14-0006CJ	01/15/2014	Magistration	State of Texas vs. Juliana Rodriguez-Hernandez	No
MG14-0007CJ	01/15/2014	Magistration	State of Texas vs. Rosa Licea	No
MG14-0008CJ	01/15/2014	Magistration	State of Texas vs. Laverne Williams	No
MG14-0009CJ	01/15/2014	Magistration	State of Texas vs. Amanda Mares	No
MG14-0010CJ	01/15/2014	Magistration	State of Texas vs. Jared Schmidt	No
MG14-0011CJ	01/15/2014	Magistration	State of Texas vs. Anthony Letson	No
MG14-0012CJ	01/15/2014	Magistration	State of Texas vs. Valentin Campos	No
MG14-0013CJ	01/15/2014	Magistration	State of Texas vs. Dennis Collins	No
MG14-0014CJ	02/05/2014	Magistration	State of Texas vs. Selena Maldonado	No
MG14-0015CJ	02/05/2014	Magistration	State of Texas vs. Madison Graziadei	No
MG14-0016CJ	02/05/2014	Magistration	State of Texas vs. Emily Willis	No
MG14-0017CJ	02/05/2014	Magistration	State of Texas vs. Michael Brooks	No
MG14-0018CJ	02/05/2014	Magistration	State of Texas vs. Jerome Valdez	No
MG14-0022CJ	02/19/2014	Magistration	State of Texas vs. Edith Bedolla	No
MG14-0023CJ	02/19/2014	Magistration	State of Texas vs. Samantha Flores	No
MG14-0024CJ	02/19/2014	Magistration	State of Texas vs. Mariselda Gonzales	No
MG14-0025CJ	02/19/2014	Magistration	State of Texas vs. Cierrah Ramirez	No
MG14-0026CJ	02/19/2014	Magistration	State of Texas vs. David Palomo	No
MG14-0056CJ	03/05/2014	Magistration	State of Texas vs. Eileen Conley	No
MG14-0057CJ	04/02/2014	Magistration	State of Texas vs. Selma Mustafic	No
MG14-0058CJ	04/02/2014	Magistration	State of Texas vs. Sarah Trcka	No
MG14-0059CJ	04/02/2014	Magistration	State of Texas vs. Jennifer Anderson	No
MG14-0060CJ	04/02/2014	Magistration	State of Texas vs. Melanie Ponce	No
MG14-0061CJ	04/16/2014	Magistration	State of Texas vs. Christina Hinger	No
MG14-0062CJ	04/16/2014	Magistration	State of Texas vs. Jennifer Belvin	No

Case Assignment Report

TXHAYSPROD

Date Range: 01/01/2011 to 12/31/2018 Case Category: Appellate,Civil,Criminal,Family,Probate or Men Sorted Order: Filing Date

Date Range Type: File Date Case Types: All

Include Event Types: Abstract Of Judgment,Acquittal,Affidavit,Affidavit For Substituted Service,Affidavit of Business Records,Affidavit

Exclude Event Types:

County Judge

County Judge

Case Number	Filing Date	Case Type	Case Style	Case Flag
MG14-0063CJ	05/07/2014	Magistration	State of Texas vs. Yesenia Rocha	No
MG14-0065CJ	05/07/2014	Magistration	State of Texas vs. Ethel Gonzales	No
MG14-0066CJ	05/07/2014	Magistration	State of Texas vs. Charles Schmidt	No
MG14-0067CJ	05/07/2014	Magistration	State of Texas vs. Andres Martinez	No
MG14-0068CJ	06/04/2014	Magistration	State of Texas vs. Rusty Roberson	No
MG14-0069CJ	06/04/2014	Magistration	State of Texas vs. Nancy Freels	No
MG14-0070CJ	06/18/2014	Magistration	State of Texas vs. Mark Perez	No
MG14-0071CJ	06/18/2014	Magistration	State of Texas vs. Kathleen Carpenter	No
MG14-0072CJ	08/06/2014	Magistration	State of Texas vs. Quincy Clark	No
MG14-0073CJ	08/06/2014	Magistration	State of Texas vs. Joshua Ferchalk	No
MG14-0074CJ	08/06/2014	Magistration	State of Texas vs. Brandon Scharmann	No
MG14-0075CJ	08/06/2014	Magistration	State of Texas vs. Bailey Horst	No
MG14-0076CJ	08/06/2014	Magistration	State of Texas vs. Dolores Voudouris	No
MG14-0077CJ	09/03/2014	Magistration	State of Texas vs. Jose Garcia	No
MG14-0078CJ	09/03/2014	Magistration	State of Texas vs. Joseph Newman	No
MG14-0079CJ	09/03/2014	Magistration	State of Texas vs. Alvaro Nunez-Gueta	No
MG14-0080CJ	09/03/2014	Magistration	State of Texas vs. Steven Barkley	No
MG14-0081CJ	09/03/2014	Magistration	State of Texas vs. Clarissa Andrade	No
MG14-0082CJ	09/03/2014	Magistration	State of Texas vs. Alexis Morado	No
MG14-0083CJ	10/01/2014	Magistration	State of Texas vs. Michael Gryta	No
MG14-0084CJ	10/01/2014	Magistration	State of Texas vs. Wesley Perry	No
MG14-0085CJ	10/01/2014	Magistration	State of Texas vs. Ariel Alva	No
MG14-0086CJ	10/01/2014	Magistration	State of Texas vs. Maria Rodriguez	No
MG14-0087CJ	11/05/2014	Magistration	State of Texas vs. Kathryn Clingman	No
MG14-0088CJ	11/05/2014	Magistration	State of Texas vs. Gene Hofmann	No
MG14-0089CJ	11/05/2014	Magistration	State of Texas vs. George Barnett, IV	No
MG14-0090CJ	11/05/2014	Magistration	State of Texas vs. Gregory Dickinson	No
MG14-0091CJ	12/03/2014	Magistration	State of Texas vs. Jenifer Medina	No
MG14-0092CJ	12/03/2014	Magistration	State of Texas vs. Joseph Arredondo	No
MG14-0093CJ	12/03/2014	Magistration	State of Texas vs. Dorian Davis	No
MG14-0094CJ	12/03/2014	Magistration	State of Texas vs. Jackson King	No
MG15-0001CJ	01/07/2015	Magistration	State of Texas vs. Virginia Martinez	No
MG15-0002CJ	01/07/2015	Magistration	State of Texas vs. Eileen Conley	No
MG15-0003CJ	01/07/2015	Magistration	State of Texas vs. Abel Martinez	No
MG15-0004CJ	01/07/2015	Magistration	State of Texas vs. Kelvin McCoy	No
MG15-0005CJ	01/07/2015	Magistration	State of Texas vs. Jose Banda	No
MG15-0006CJ	01/07/2015	Magistration	State of Texas vs. Christopher Campos	No
MG15-0007CJ	01/07/2015	Magistration	State of Texas vs. Taylor Foreman	No
MG15-0008CJ	01/07/2015	Magistration	State of Texas vs. Christian Mendez	No
MG15-0009CJ	02/04/2015	Magistration	State of Texas vs. Nathan Elias	No
MG15-0010CJ	02/04/2015	Magistration	State of Texas vs. Luis Sifuentes-Balderas	No

Case Assignment Report

TXHAYSPROD

Date Range: 01/01/2011 to 12/31/2018 Case Category: Appellate,Civil,Criminal,Family,Probate or Men Sorted Order: Filing Date

Date Range Type: File Date Case Types: All

Include Event Types: Abstract Of Judgment,Acquittal,Affidavit,Affidavit For Substituted Service,Affidavit of Business Records,Affidavit

Exclude Event Types:

County Judge

County Judge

Case Number	Filing Date	Case Type	Case Style	Case Flag
MG15-0011CJ	02/04/2015	Magistration	State of Texas vs. Latisha Honold	No
MG15-0012CJ	02/04/2015	Magistration	State of Texas vs. Fabian Martinez	No
MG15-0013CJ	02/04/2015	Magistration	State of Texas vs. Stephanie Enriquez	No
MG15-0014CJ	02/04/2015	Magistration	State of Texas vs. Rebecca Mena	No
MG15-0015CJ	02/04/2015	Magistration	State of Texas vs. Gina Williams	No
MG15-0016CJ	02/04/2015	Magistration	State of Texas vs. Leah Noel	No
MG15-0017CJ	02/04/2015	Magistration	State of Texas vs. Crisoforo Bustamante	No
MG15-0018CJ	02/04/2015	Magistration	State of Texas vs. Rita Castillo	No
MG15-0019CJ	02/04/2015	Magistration	State of Texas vs. Amanda Perez	No
MG15-0020CJ	02/04/2015	Magistration	State of Texas vs. Leasa Calvert	No
MG15-0021CJ	03/04/2015	Magistration	State of Texas vs. Mari Orozco	No
MG15-0022CJ	03/04/2015	Magistration	State of Texas vs. Susana Alvarez	No
MG15-0023CJ	03/04/2015	Magistration	State of Texas vs. Kamber Piskorik	No
MG15-0024CJ	03/04/2015	Magistration	State of Texas vs. Cassie Keenan	No
MG15-0025CJ	03/04/2015	Magistration	State of Texas vs. Jasmine Johnson	No
MG15-0026CJ	03/04/2015	Magistration	State of Texas vs. Luis Porcallo	No
MG15-0027CJ	03/04/2015	Magistration	State of Texas vs. Oscar Flores	No
MG15-0028CJ	03/04/2015	Magistration	State of Texas vs. Sostenes Rivas, III	No
MG15-0029CJ	03/04/2015	Magistration	State of Texas vs. Tiffany Rios	No
MG15-0030CJ	04/01/2015	Magistration	The State of Texas vs. Elizabeth Reyes	No
MG15-0031CJ	04/01/2015	Magistration	State of Texas vs. Katherine Blundell	No
MG15-0032CJ	04/01/2015	Magistration	State of Texas vs. Gabrielle Reyes	No
MG15-0033CJ	04/01/2015	Magistration	State of Texas vs. Andrea Sibrian	No
MG15-0034CJ	04/01/2015	Magistration	State of Texas vs. Brian Colwell	No
MG15-0035CJ	04/01/2015	Magistration	State of Texas vs. Sergio Rodriguez	No
MG15-0036CJ	04/01/2015	Magistration	State of Texas vs. Jake Milan	No
MG15-0037CJ	04/01/2015	Magistration	State of Texas vs. Christian Trejo	No
MG15-0038CJ	04/01/2015	Magistration	State of Texas vs. Elias Vasquez	No
MG15-0039CJ	04/01/2015	Magistration	State of Texas vs. Christian Barrientos	No
MG15-0040CJ	04/01/2015	Magistration	State of Texas vs. Drew Winton	No
MG15-0041CJ	04/01/2015	Magistration	State of Texas vs. Christian Ellertson	No
MG15-0042CJ	04/01/2015	Magistration	State of Texas vs. Jose Pizana	No
MG15-0043CJ	04/01/2015	Magistration	State of Texas vs. Jordan White	No
MG15-0044CJ	05/06/2015	Magistration	State of Texas vs. Margarita Cunningham	No
MG15-0045CJ	05/06/2015	Magistration	State of Texas vs. Maria G. Garcia	No
MG15-0047CJ	05/06/2015	Magistration	State of Texas vs. Luis Porcallo	No
MG15-0048CJ	05/06/2015	Magistration	State of Texas vs. Anthony Gallegos	No
MG15-0049CJ	05/06/2015	Magistration	The State of Texas vs. Jose Gonzalez-Aguilar	No
MG15-0050CJ	05/06/2015	Magistration	State of Texas vs. Brandon Lee	No
MG15-0051CJ	06/03/2015	Magistration	State of Texas vs. Marisa Medrano	No
MG15-0052CJ	06/03/2015	Magistration	State of Texas vs. Valerie Phipps	No

Case Assignment Report

TXHAYSPROD

Date Range: 01/01/2011 to 12/31/2018 Case Category: Appellate,Civil,Criminal,Family,Probate or Men Sorted Order: Filing Date

Date Range Type: File Date Case Types: All

Include Event Types: Abstract Of Judgment,Acquittal,Affidavit,Affidavit For Substituted Service,Affidavit of Business Records,Affidavit

Exclude Event Types:

County Judge

County Judge

Case Number	Filing Date	Case Type	Case Style	Case Flag
MG15-0053CJ	06/03/2015	Magistrations	State of Texas vs. Suewanda Bobbitt	No
MG15-0054CJ	06/03/2015	Magistrations	State of Texas vs. Jonathan Villescaz	No
MG15-0055CJ	06/03/2015	Magistrations	State of Texas vs. Juvenal Lopez-Cruz	No
MG15-0056CJ	06/03/2015	Magistrations	State of Texas vs. Patrick Summers	No
MG15-0057CJ	06/03/2015	Magistrations	State of Texas vs. Alejandro Corpus, III	No
MG15-0058CJ	07/01/2015	Magistrations	State of Texas vs. Emily Ruiz	No
MG15-0059CJ	07/01/2015	Magistrations	The State of Texas vs. Mysti Talemal	No
MG15-0060CJ	07/01/2015	Magistrations	State of Texas vs. Katherine Logue	No
MG15-0062CJ	07/01/2015	Magistrations	State of Texas vs. Josh Flowers	No
MG15-0063CJ	07/01/2015	Magistrations	State of Texas vs. Orlando Ortiz	No
MG15-0064CJ	08/05/2015	Magistrations	State of Texas vs. Hannah Johnson	No
MG15-0066CJ	08/05/2015	Magistrations	State of Texas vs. Emilee Reeves	No
MG15-0067CJ	08/05/2015	Magistrations	State of Texas vs. Elizabeth Webster	No
MG15-0068CJ	08/05/2015	Magistrations	State of Texas vs. Enrique Vasquez-Flores	No
MG15-0069CJ	08/05/2015	Magistrations	State of Texas vs. Crispin Lyman	No
MG15-0070CJ	09/02/2015	Magistrations	State of Texas vs. Samuel Wells	No
MG15-0071CJ	09/02/2015	Magistrations	State of Texas vs. Jeanette Guillein	No
MG15-0072CJ	09/02/2015	Magistrations	The State of Texas vs. Ciarra Oxford	No
MG15-0073CJ	09/02/2015	Magistrations	State of Texas vs. Jennifer Carroll	No
MG15-0074CJ	09/02/2015	Magistrations	State of Texas vs. Lauren Sargent	No
MG15-0075CJ	09/02/2015	Magistrations	State of Texas vs. Veronica Carrion	No
MG15-0076CJ	10/07/2015	Magistrations	State of Texas vs. Jennifer King	No
MG15-0077CJ	10/07/2015	Magistrations	State of Texas vs. Michael Hernandez	No
MG15-0078CJ	10/07/2015	Magistrations	The State of Texas vs. Blaine Gray	No
MG15-0079CJ	10/07/2015	Magistrations	State of Texas vs. Mark Sanchez	No
MG15-0080CJ	10/07/2015	Magistrations	State of Texas vs. John Perez	No
MG15-0081CJ	11/04/2015	Magistrations	The State of Texas vs. Magdaleno Pecina	No
MG15-0082CJ	11/04/2015	Magistrations	State of Texas vs. Jacob Smith	No
MG15-0083CJ	11/04/2015	Magistrations	The State of Texas vs. Jacob Mendoza	No
MG15-0084CJ	11/04/2015	Magistrations	State of Texas vs. Xavier Garcia	No
MG15-0085CJ	11/04/2015	Magistrations	State of Texas vs. Destiny Tealer	No
MG15-0086CJ	12/02/2015	Magistrations	The State of Texas vs. Hilda Ayala	No
MG15-0087CJ	12/02/2015	Magistrations	The State of Texas vs. Beverly Smith	No
MG15-0088CJ	12/02/2015	Magistrations	The State of Texas vs. Angelo Perez	No
MG15-0089CJ	12/02/2015	Magistrations	State of Texas vs. Brian Dieringer	No
MG16-0001CJ	01/06/2016	Magistrations	The State of Texas vs. Alonso Rodriguez, Jr.	No
MG16-0002CJ	02/03/2016	Magistrations	The State of Texas vs. Jessica Falcon-Velazquez	No
MG16-0003CJ	02/03/2016	Magistrations	The State of Texas vs. Ezequel Bermudez	No
MG16-0004CJ	03/02/2016	Magistrations	The State of Texas vs. Shanellee Ferguson	No
MG16-0005CJ	03/02/2016	Magistrations	The State of Texas vs. Khiana Hill	No

Case Assignment Report

TXHAYSPROD

Date Range: 01/01/2011 to 12/31/2018 Case Category: Appellate,Civil,Criminal,Family,Probate or Men Sorted Order: Filing Date

Date Range Type: File Date Case Types: All

Include Event Types: Abstract Of Judgment,Acquittal,Affidavit,Affidavit For Substituted Service,Affidavit of Business Records,Affidavit

Exclude Event Types:

County Judge

County Judge

Case Number	Filing Date	Case Type	Case Style	Case Flag
MG16-0006CJ	03/02/2016	Magistrations	The State of Texas vs. Alanna Klotzbach	No
MG16-0007CJ	03/02/2016	Magistrations	The State of Texas vs. Ciarra Oxford	No
MG16-0008CJ	03/02/2016	Magistrations	The State of Texas vs. Tracy Smith	No
MG16-0009CJ	04/06/2016	Magistrations	The State of Texas vs. Roland Gomez	No
MG16-0010CJ	04/06/2016	Magistrations	The State of Texas vs. Homero Alvarado	No
MG16-0011CJ	04/06/2016	Magistrations	The State of Texas vs. Jonathan Cantu	No
MG16-0012CJ	05/04/2016	Magistrations	The State of Texas vs. Macario Delgado	No
MG16-0013CJ	05/04/2016	Magistrations	The State of Texas vs. Katia McQueen	No
MG16-0014CJ	05/04/2016	Magistrations	The State of Texas vs. Brent Brown	No
MG16-0016CJ	06/01/2016	Magistrations	The State of Texas vs. Emma Reinhuber	No
MG16-0017CJ	06/01/2016	Magistrations	The State of Texas vs. John Alexander	No
MG16-0018CJ	06/01/2016	Magistrations	The State of Texas vs. Jesus Torres	No
MG16-0019CJ	07/06/2016	Magistrations	The State of Texas vs. Katherine Rodriguez	No
MG16-0020CJ	07/06/2016	Magistrations	The State of Texas vs. Amber Sanchez	No
MG16-0021CJ	07/06/2016	Magistrations	The State of Texas vs. Brandon Gutierrez	No
MG16-0022CJ	07/06/2016	Magistrations	The State of Texas vs. Michael Manson, Jr.	No
MG16-0023CJ	08/03/2016	Magistrations	The State of Texas vs. Katrina Collicott	No
MG16-0024CJ	08/03/2016	Magistrations	The State of Texas vs. Melissa Fernandez	No
MG16-0025CJ	08/03/2016	Magistrations	The State of Texas vs. Ashley Rivas	No
MG16-0026CJ	08/03/2016	Magistrations	The State of Texas vs. Tarah Williams	No
MG16-0027CJ	09/07/2016	Magistrations	The State of Texas vs. Amelia Cunningham	No
MG16-0028CJ	09/07/2016	Magistrations	The State of Texas vs. Alexis Estep	No
MG16-0029CJ	09/07/2016	Magistrations	The State of Texas vs. Raven Martinez	No
MG16-0030CJ	09/07/2016	Magistrations	The State of Texas vs. Alexandria Sandoval	No
MG16-0031CJ	09/07/2016	Magistrations	The State of Texas vs. Emily Van Dusen	No
MG16-0032CJ	10/05/2016	Magistrations	The State of Texas vs. Heather Fry	No
MG16-0033CJ	10/05/2016	Magistrations	The State of Texas vs. Hanah Shuffield	No
MG16-0034CJ	10/05/2016	Magistrations	The State of Texas vs. Andrew Caldwell	No
MG16-0035CJ	10/05/2016	Magistrations	The State of Texas vs. Thayler Meaux	No
MG16-0036CJ	10/05/2016	Magistrations	The State of Texas vs. Andrew Partida	No
MG16-0037CJ	10/05/2016	Magistrations	The State of Texas vs. Joseph Reese	No
MG16-0038CJ	10/05/2016	Magistrations	The State of Texas vs. Dylan Richter	No
MG16-0039CJ	11/02/2016	Magistrations	The State of Texas vs. Carol Gonzales	No
MG16-0040CJ	11/02/2016	Magistrations	The State of Texas vs. Kendall Hutton	No
MG17-0001CJ	02/01/2017	Magistrations	The State of Texas vs. Margarita Castillo	No
MG17-0002CJ	02/01/2017	Magistrations	The State of Texas vs. Ryan Hudak	No
MG17-0003CJ	02/01/2017	Magistrations	The State of Texas vs. William Farr	No
MG17-0004CJ	03/01/2017	Magistrations	The State of Texas vs. Felicita Serna	No
MG17-0005CJ	03/01/2017	Magistrations	The State of Texas vs. Ronnie Flores, Jr.	No
MG17-0006CJ	03/01/2017	Magistrations	The State of Texas vs. Orlando Hinojosa	No
MG17-0007CJ	03/01/2017	Magistrations	The State of Texas vs. Clifford Gardner	No

Case Assignment Report

TXHAYSPROD

Date Range: 01/01/2011 to 12/31/2018 Case Category: Appellate,Civil,Criminal,Family,Probate or Men Sorted Order: Filing Date

Date Range Type: File Date Case Types: All

Include Event Types: Abstract Of Judgment,Acquittal,Affidavit,Affidavit For Substituted Service,Affidavit of Business Records,Affidavit

Exclude Event Types:

County Judge

County Judge

Case Number	Filing Date	Case Type	Case Style	Case Flag
MG17-0008CJ	05/03/2017	Magistration	The State of Texas vs. Christopher Resendez	No
MG17-0009CJ	07/05/2017	Magistration	The State of Texas vs. Lisa Gilmore	No
MG17-0010CJ	07/05/2017	Magistration	The State of Texas vs. Lupita Hernandez	No
MG17-0011CJ	07/05/2017	Magistration	The State of Texas vs. Lela Shannon	No
MG17-0012CJ	07/05/2017	Magistration	The State of Texas vs. Rudy Moreno	No

Total (Unassigned Cases): 209

Grand Total (Unassigned Cases): 209

Judicial Assignment Activity

TXHAYSPROD

Date Range: 01/01/2011 to 12/31/2018

Include: Case Detail Nodes: Case Manager; County Clerk; County Court; County Court at Law #1; County Court at Law #2; County Court at Law #3; District Clerk; 22nd District Court; 207th District

Judicial Officer

Type of Assignment, Random/Manual

Direct

Manual

Total

Cobb, Bert

-

1

1

Total

0

1

1

Judicial Assignment Activity

TXHAYSPROD

Date Range: 01/01/2011 to 12/31/2018

Include: Case Detail Nodes: Case Manager; County Clerk; County Court; County Court at Law #1; County Court at Law #2; County Court at Law #3; District Clerk; 22nd District Court; 207th District

Cobb, Bert

Manual Assignments: 1

Case Number	Style / Defendant Name	Assignment Date	Case Type
MG14-0005CJ	Martinez, Halie Dyann	01/15/2014	Magistration

EXHIBIT "C"

CAUSE NO. _____

THE STATE OF TEXAS EX REL.
MR. NATHAN KASPAR

Plaintiff,

V.

RUBEN BECERRA, IN HIS OFFICIAL
CAPACITY AS COUNTY JUDGE OF
HAYS COUNTY, TEXAS

Defendant.

§
§
§
§
§
§
§
§
§
§
§

IN THE DISTRICT COURT

_____ JUDICIAL DISTRICT

HAYS COUNTY, TEXAS

DECLARATION OF RENE GARNER

I am over the age of eighteen and in all respects competent to make this declaration. I have personal knowledge of the factual matters stated herein.

1. My name is Rene Garner. I am the Administrator for Hays County Courts at Law 1, 2, and 3, and have held this job continuously since 1984. I have personal knowledge of the facts stated in this affidavit, which are true and correct.
2. In my position as Administrator, I oversee and have knowledge of all dockets (civil and criminal) for Hays County Courts at Law 1, 2, and 3. Ruben Becerra has never presided over any docket at the Hays County Courts at Law level.

Further declarant sayeth not.

My name is Rene Garne. My date of birth is 5/19/63
and my address is 101 Crestview Drive, Wimberley, Texas 78676. I declare under penalty of perjury that the foregoing is true and correct to the best of my knowledge.

Executed in Hays County, State of Texas, on the 11th day of September, 2020.

Rene Garner
Rene Garner

EXHIBIT "D"

CAUSE NO. _____

THE STATE OF TEXAS EX REL.
MR. NATHAN KASPAR

ss

IN THE DISTRICT COURT

Plaintiff,

20

V.

son

20

JUDICIAL DISTRICT

RUBEN BECERRA, IN HIS OFFICIAL
CAPACITY AS COUNTY JUDGE OF
HAYS COUNTY, TEXAS

20

20

20

or

Defendant.

55

HAYS COUNTY, TEXAS

Declaration of Nathan Kaspar


My name is Nathan Kaspar. I am over the age of eighteen and in all respects competent to make this declaration. I have personal knowledge of the factual matters stated herein.

I am one of the Plaintiff in this case. The purpose of this declaration is to support the petition to which this declaration is attached, and to ensure the petition meets the requirements of *Local Government Code* § 87.015(b). I have reviewed the petition to which this declaration is attached, and all factual allegations contained therein are true and correct.

Further declarant sayeth not.

My name is Nathan Kaspar. My date of birth is SEPTEMBER 13th 1977
and my address is 1023 GRASSY FIELD RD, AUSTIN TX (HAYS.CO) 78737. I declare
under penalty of perjury that the foregoing is true and correct to the best of my knowledge.

Executed in Hays County, State of Texas, on the 11th day of September 2020.


Nathan Kaspar