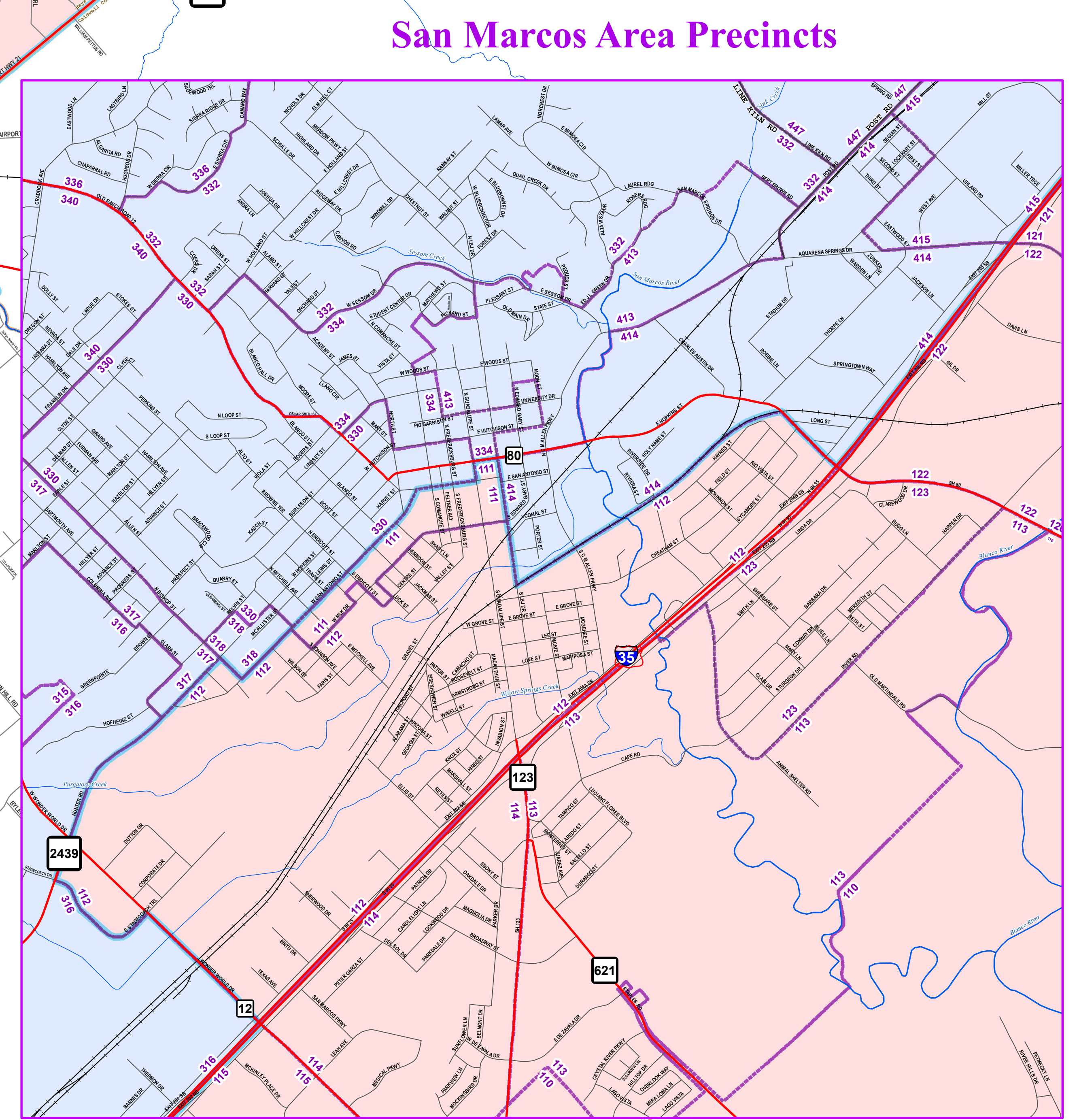
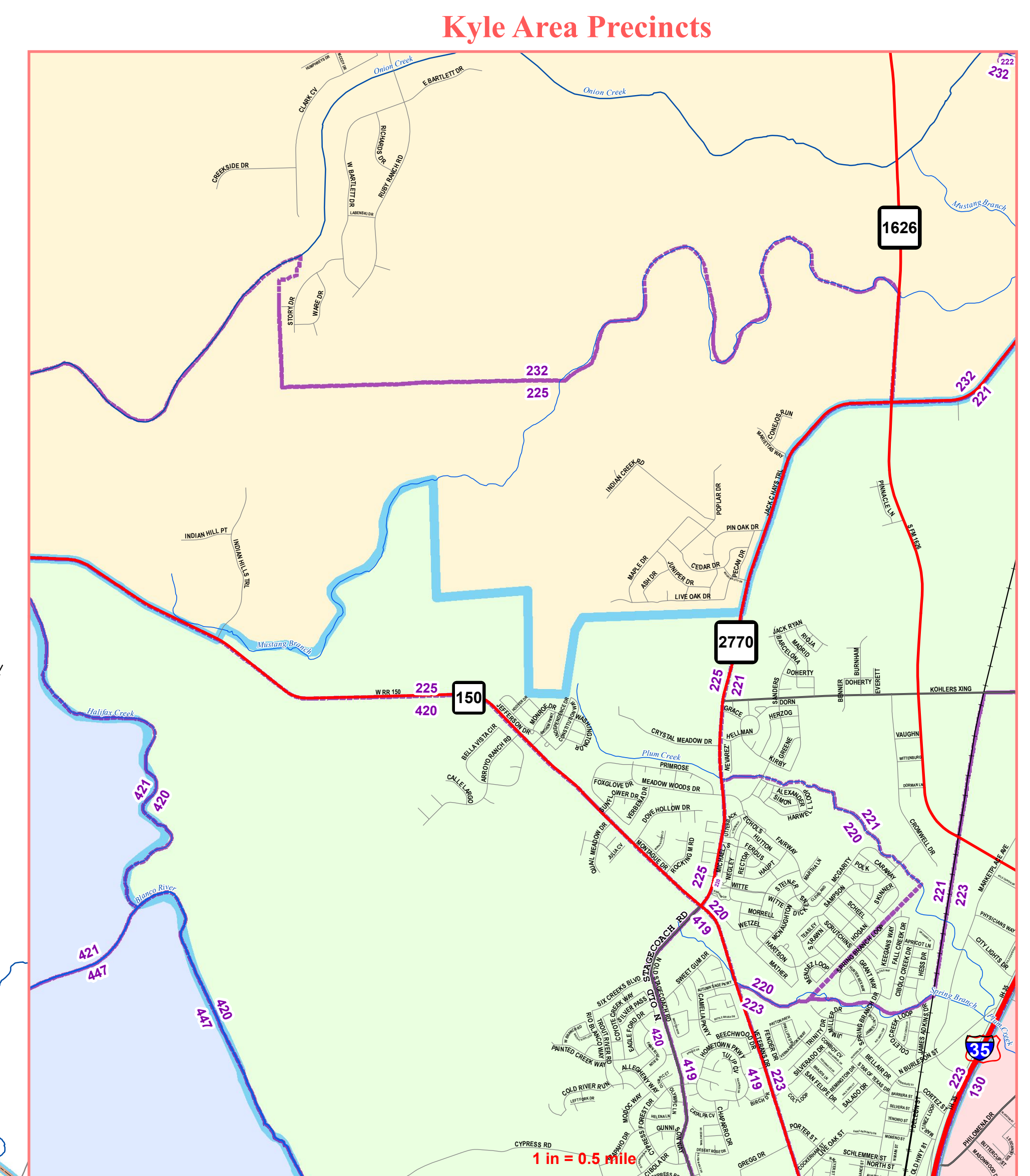
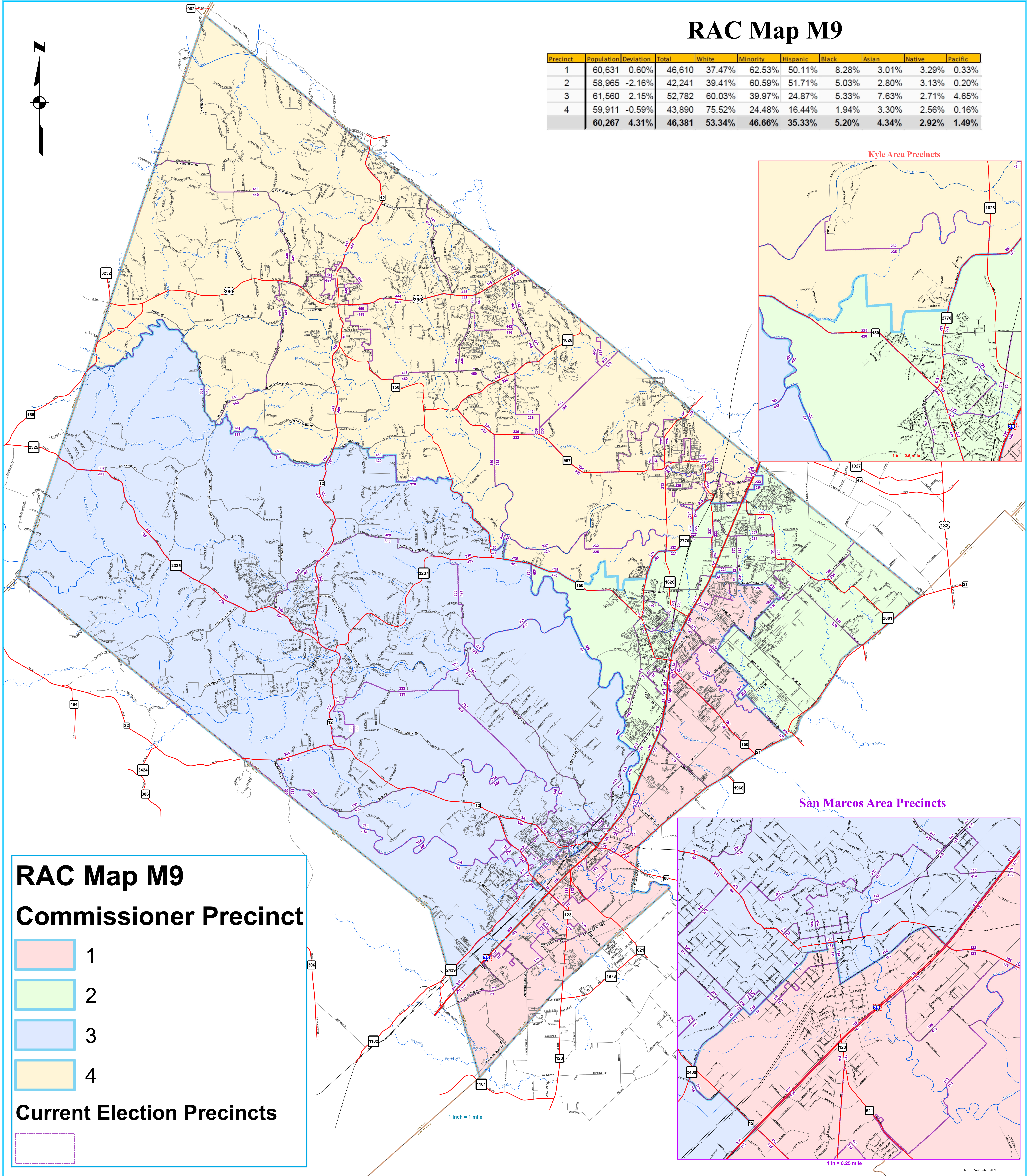
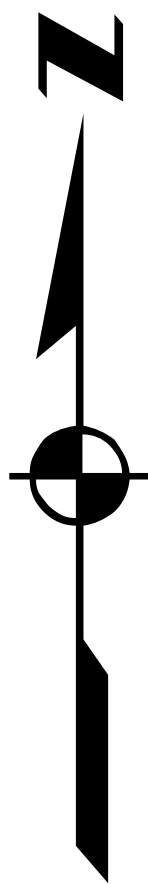


# RAC Map M9

Precinct	Population	Deviation	Total	White	Minority	Hispanic	Black	Asian	Native	Pacific
1	60,631	0.60%	46,610	37.47%	62.53%	50.11%	8.28%	3.01%	3.29%	0.33%
2	58,965	-2.16%	42,241	39.41%	60.59%	51.71%	5.03%	2.80%	3.13%	0.20%
3	61,560	2.15%	52,782	60.03%	39.97%	24.87%	5.33%	7.63%	2.71%	4.65%
4	59,911	-0.59%	43,890	75.52%	24.48%	16.44%	1.94%	3.30%	2.56%	0.16%
	60,267	4.31%	46,381	53.34%	46.66%	35.33%	5.20%	4.34%	2.92%	1.49%



**RAC Map M9**  
**Commissioner Precinct**

- 1
- 2
- 3
- 4

**Current Election Precincts**

-